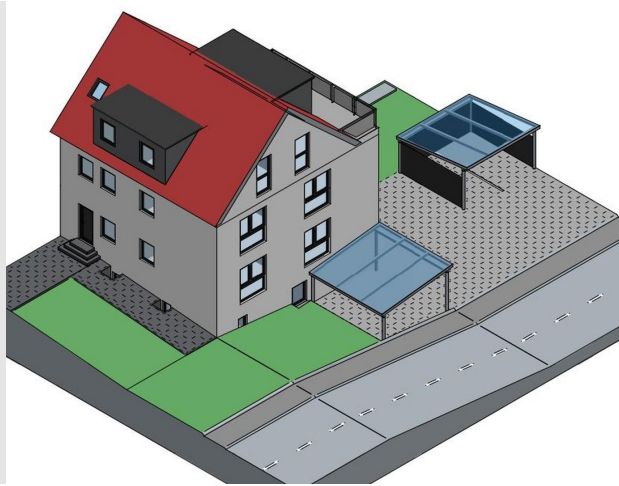


Exposé

Wohnung in Stuttgart-Degerloch

HSO Military Lease - beautiful and energy-friendly apartments near Kelley Barracks



Objekt-Nr. OM-314589

Wohnung

Vermietung: **2.125 € + NK**

Ansprechpartner:
Valentin Kosterin
Mobil: 0176 46058085

Reutlinger Str. 119
70597 Stuttgart-Degerloch
Baden-Württemberg
Deutschland

Baujahr	1937	Übernahme	Nach Vereinbarung
Etagen	4	Zustand	Erstbez. n. Sanier.
Zimmer	3,00	Schlafzimmer	1
Wohnfläche	85,00 m ²	Badezimmer	1
Energieträger	Luft-/Wasserwärme	Etage	Erdgeschoss
Summe Nebenkosten	350 €	Stellplätze	1
Miete Garage/Stellpl.	100 €	Heizung	Fußbodenheizung

Exposé - Beschreibung

Objektbeschreibung

We accept the HSO military lease!

nice energy-friendly fourplex in Stuttgart-Degerloch

built in kitchens

pet friendly

Apartment 1:

ground floor

1 living room

1 bedroom

1 bathroom

1 terrace and lawn

63sqm / 678sqft

1.575 € cold rent

1.875 € total rent

Apartment 2:

1st floor

1 living room

1 bedroom

1 child's room

1 bathroom

1 balcony

85sqm / 915sqft

2.125 € cold rent

100 € parking

2.575 € total rent

Apartment 3:

2nd floor

1 living room

1 bedroom

1 child's room

1 bathroom

1 balcony

86sqm / 926sqft

2.150 € cold rent

100 € parking

2.600 € total rent

Apartment 4:

attic floor

1 living room

1 bedroom

1 child's room

1 bathroom

1 balcony

67sqm / 721sqft

1.675 € cold rent

1.995 € total rent

Ausstattung

Highlights:

- newly renovated
- built in kitchens
- lots of natural light in all rooms
- energy efficiency class A
- > heat pump
- > floor heating
- > fully insulated + triple glass windows

Amenities:

- built-in LED ceiling spotlights
- walk-in shower
- floor-length windows
- electric rolling blinds
- south-facing balcony with access from living room and bedroom

Fußboden:

Fliesen, Vinyl / PVC

Weitere Ausstattung:

Balkon, Keller, Duschbad, Einbauküche

Sonstiges

Please contact us to schedule a tour of the property. We look forward to helping you find your new apartment.

Mr. Valentin Kosterin

ALVA-IMMO GmbH

Lage

Location / Travel Times:

- 6min to kelley barracks
- 15min to patch barracks
- 20min to panzer barracks
- 10min to the city center of Stuttgart

The location offers optimal infrastructure, good connections to public transport and quick access to the federal highway and highway.

Exposé - Energieausweis

Energieausweistyp	Bedarfsausweis
Erstellungsdatum	ab 1. Mai 2014
Endenergiebedarf	33,10 kWh/(m ² a)
Energieeffizienzklasse	A



Exposé - Galerie



Kitchen

Exposé - Galerie



Bathroom



Balcony

Exposé - Galerie



Living Room



Bedroom

Exposé - Galerie



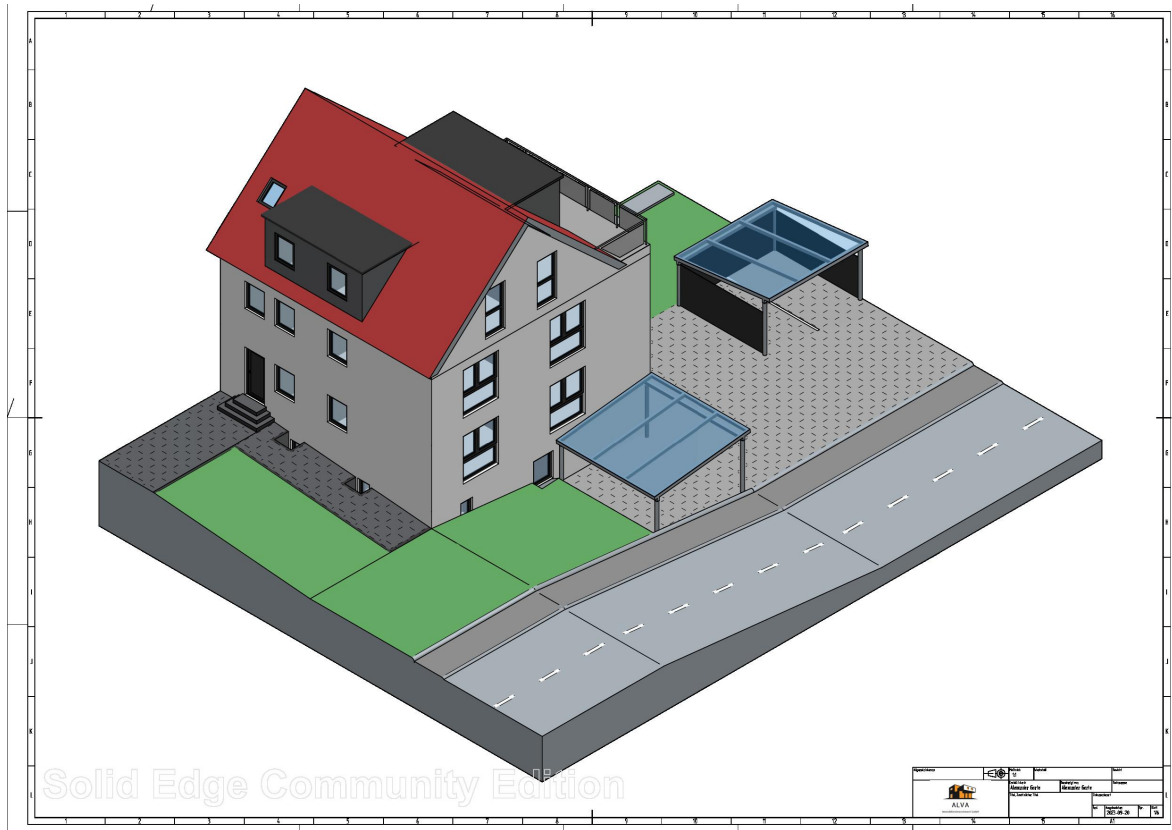
Child's Room



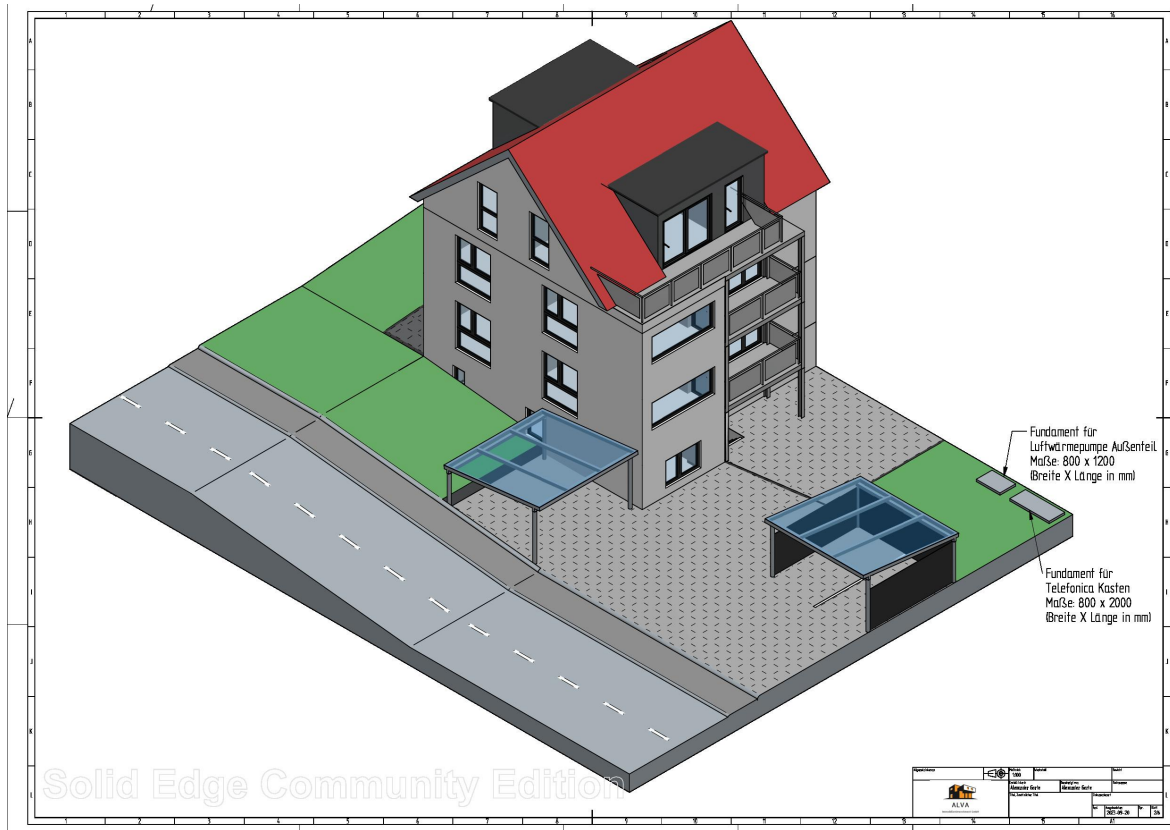
Die Zeichnungen dürfen ohne Absprache, weder vervielfältigt, noch an Dritte weitergegeben werden!

Ordered Kitchen

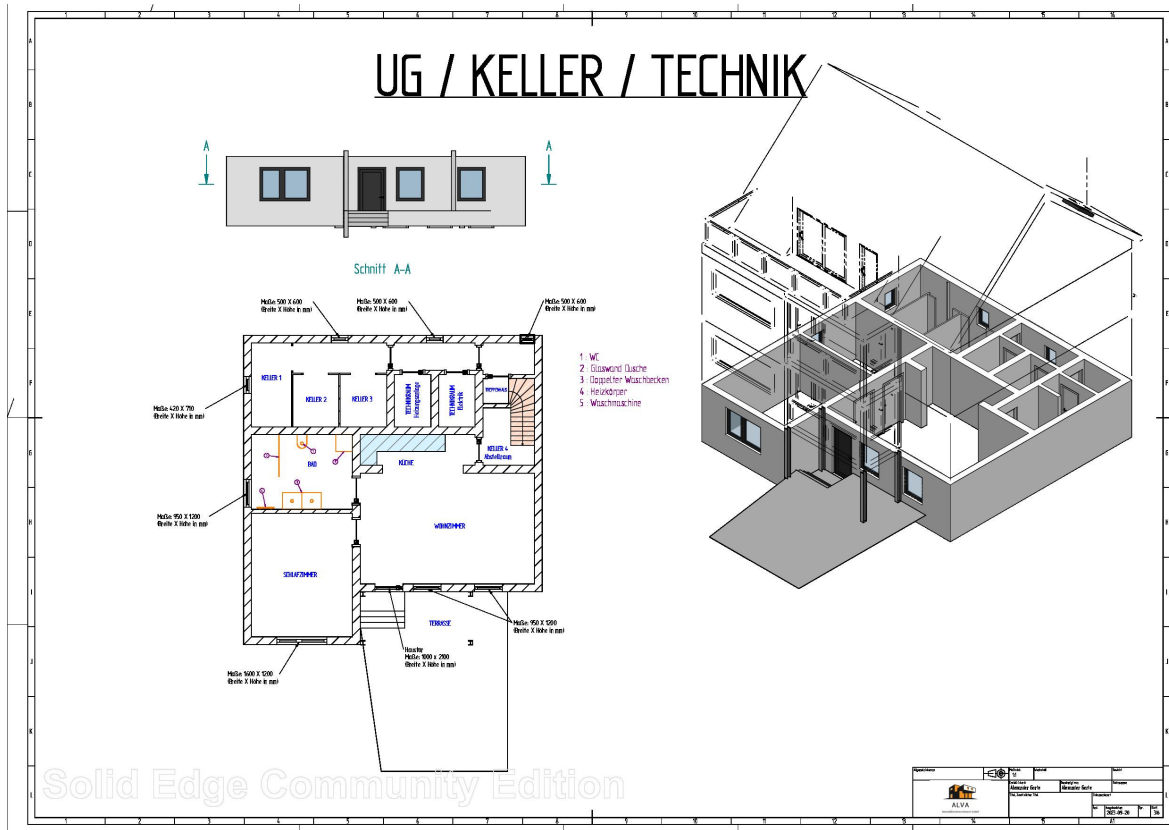
Exposé - Grundrisse



Exposé - Grundrisse



Exposé - Grundrisse



Exposé - Grundrisse

