

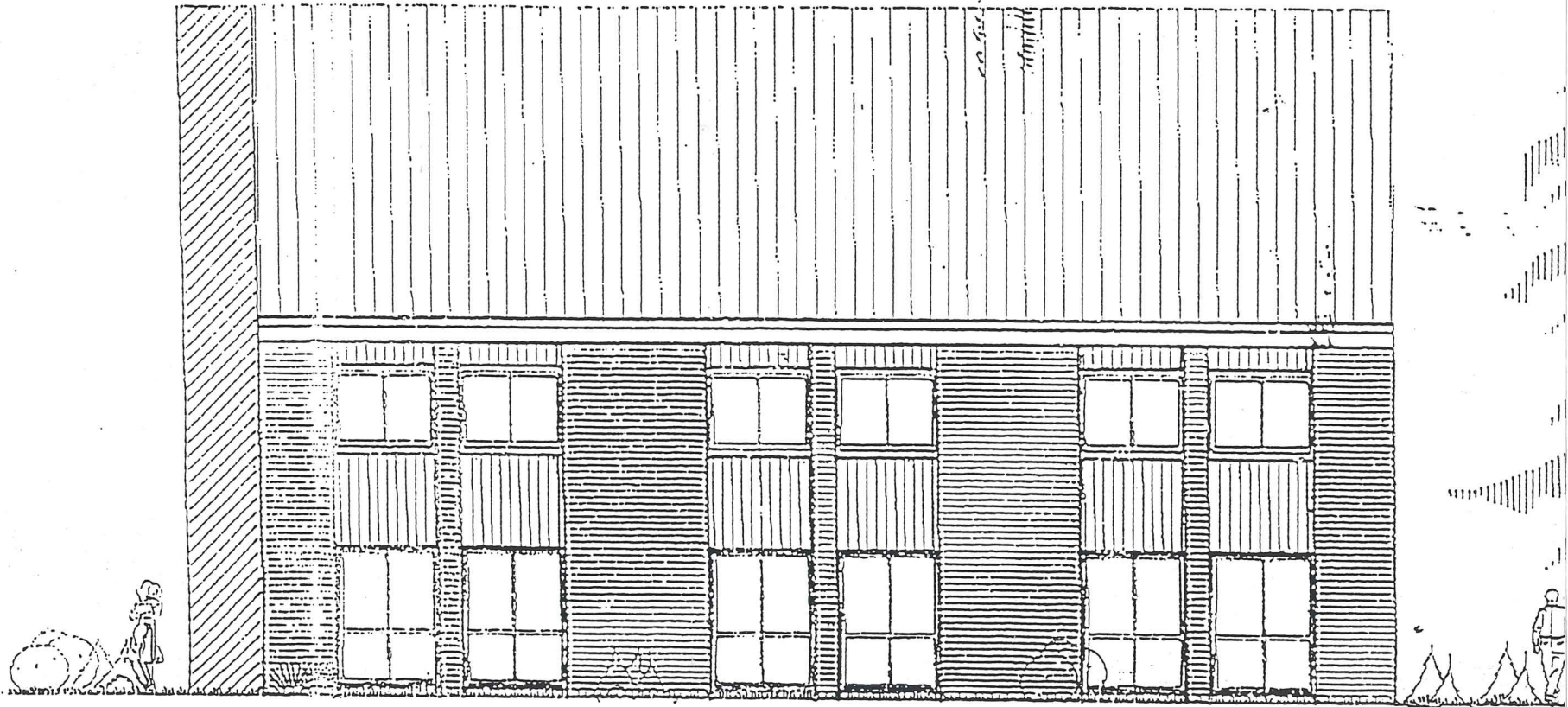
SCHNITT "A - A"

Handwritten text, possibly a name or reference number, located above the main drawing.



STRASSENANSICHT

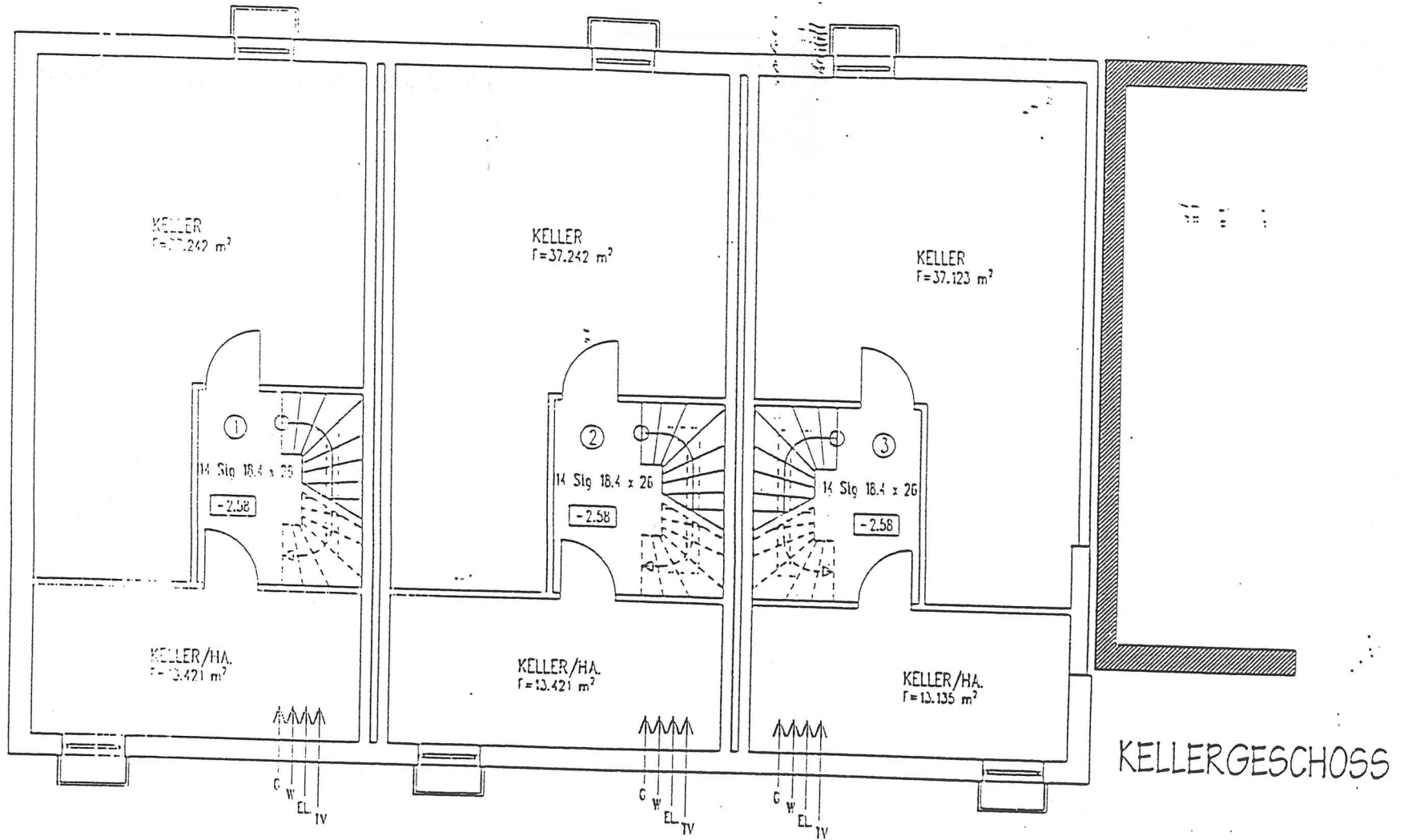
Anlage 4b

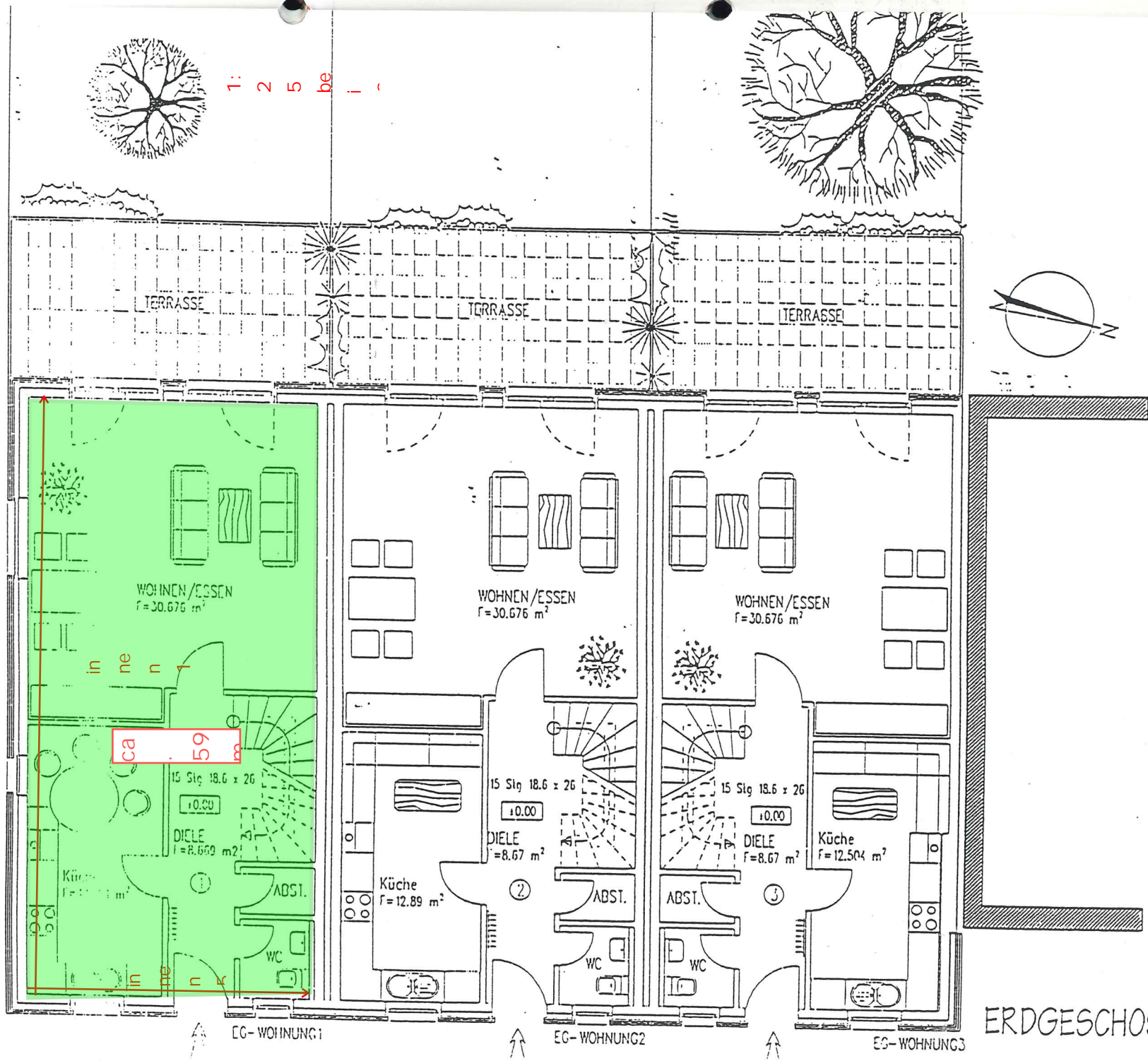


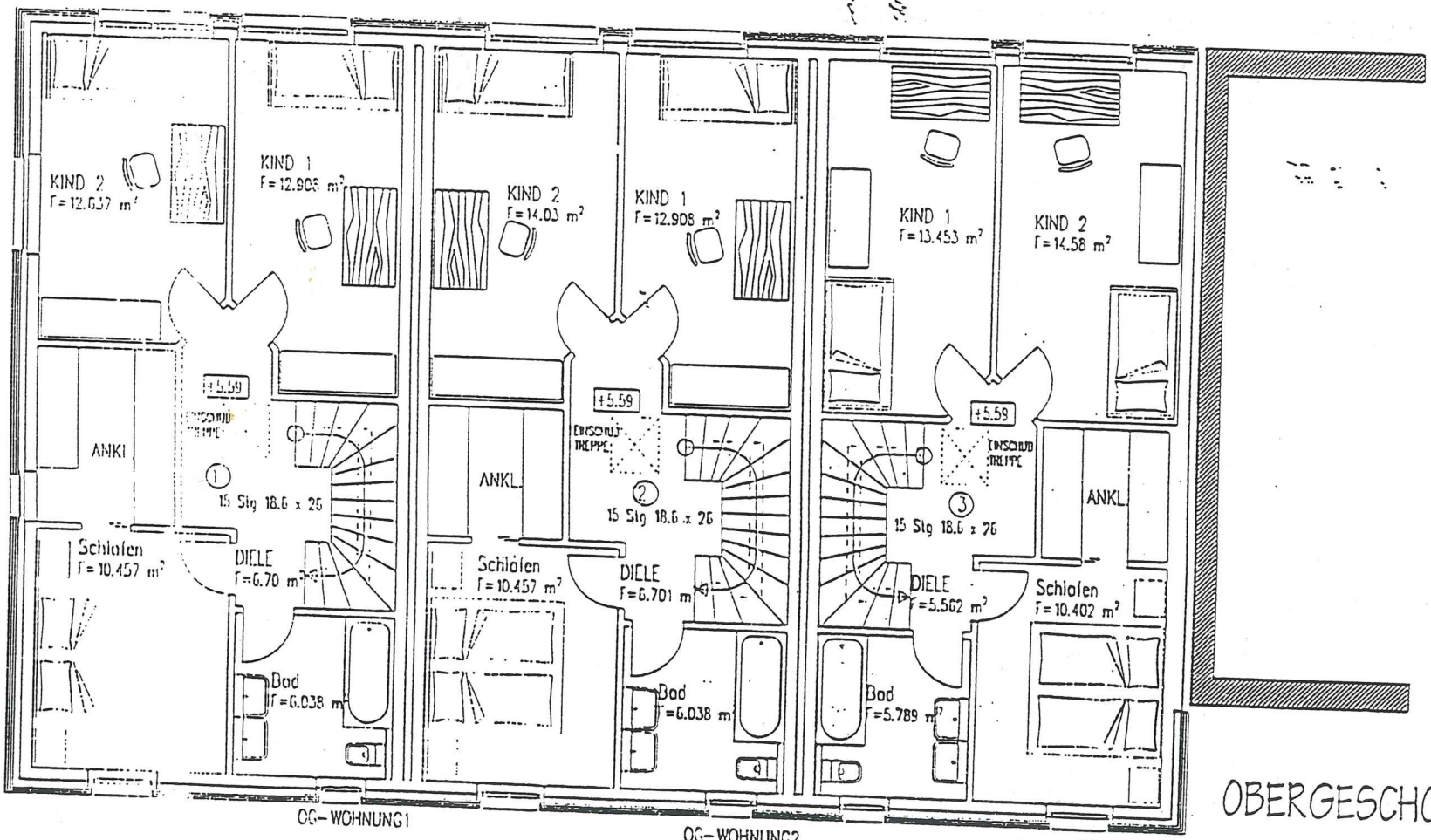
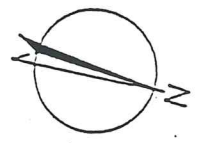
GARTENANSICHT



GIEBELANSICHT







OBERGESCHOSS

Anlage 4c

Bauvorhaben: Neubau einer Hausgruppe
Warburger Weg, Recklinghausen
Haus 3

Bauherr: Feldmann Immobilien GmbH & Co. KG
Carl-Still-Str. 19, 45659 Recklinghausen

Wohnflächenberechnung

EG

Abstellraum : 1,21 m²

Terrasse : 9,06 m²

Diele : 8,41 m²

Küche : 13,54 m²

Wohnen/
Essen : 30,98 m²

WC : 2,04 m²

netto
Grundfläche 65,23 m²

OG

Diele : 6,79 m²

Bad : 5,86 m²

Schlafen : 10,89 m²

Kind 1 : 13,30 m²

Kind 2 : 12,55 m²

Ankleide : 5,35 m²

netto
Grundfläche 54,73 m²

Wohnfläche EG 65,23 m²
Wohnfläche OG 54,73 m²

119,96 m²