

# LAGEPLAN 1:500

GEMARKUNG REICHENBACH

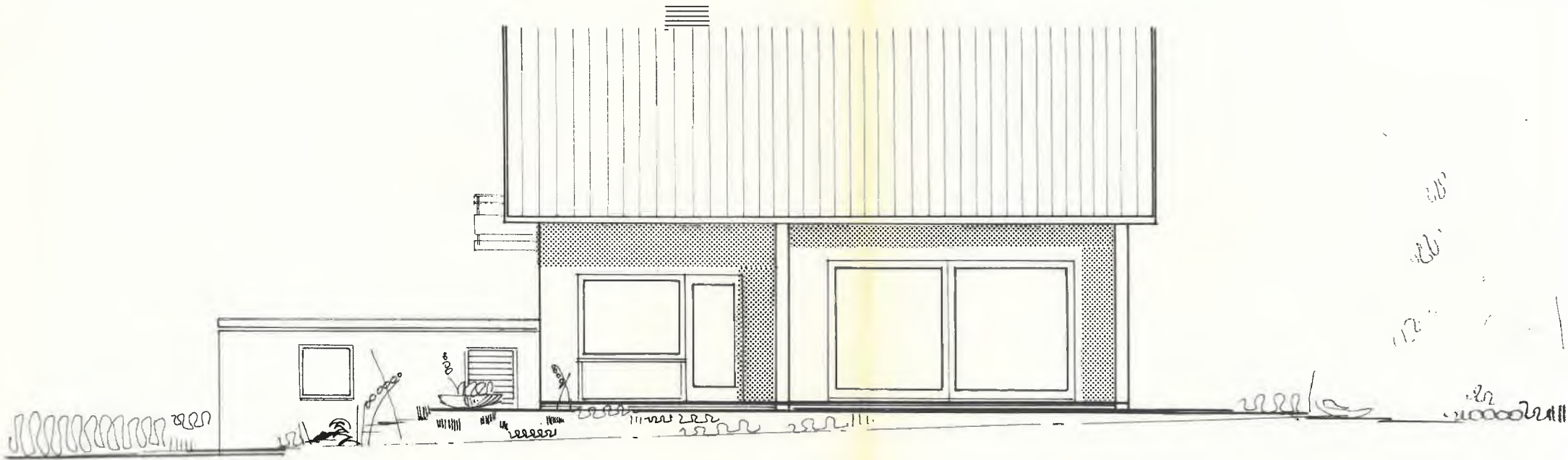
FLURSTÜCK 3018



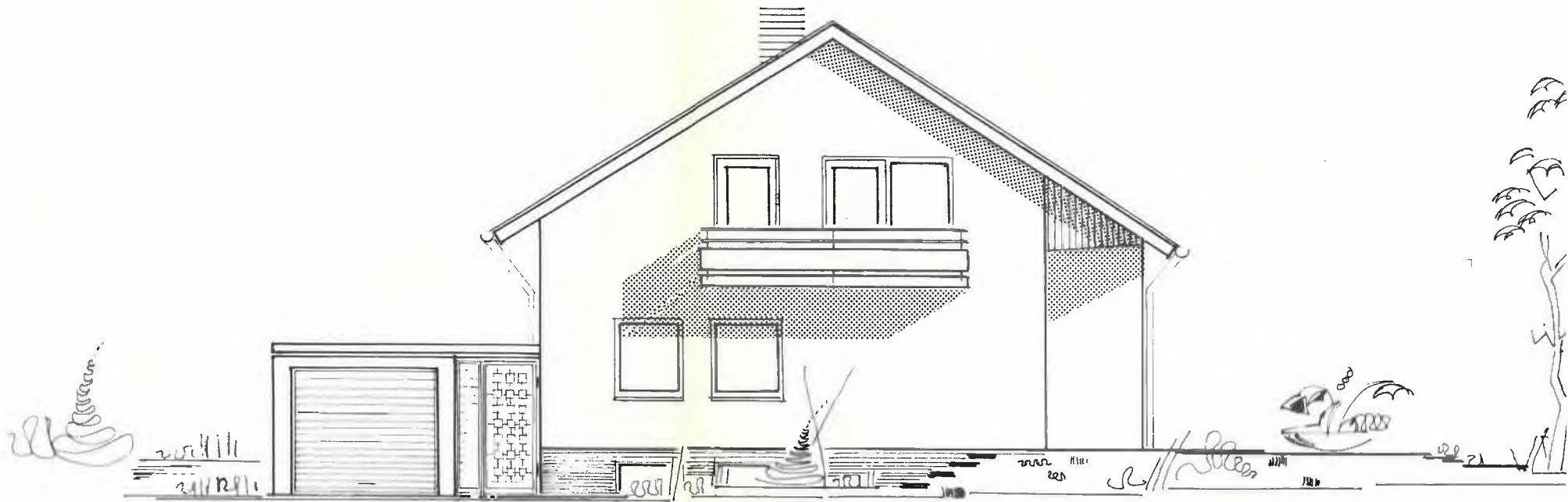
Flurstück 3018: 761qm

Herrmann

Prof. Dr.-Ing. K. Herrmann, Oberbaurat i. R.  
75 Karlsruhe, Koggenbachstr. 20, Tel. 28354



SÜD



WEST

600

599

24

5 51

24

GRENZE

GARAGE 252

24

24

24

276

24

226

24

274

11<sup>5</sup>

201

24

510<sup>5</sup>

11<sup>5</sup>

2

300

151

24

397

24

10 12<sup>5</sup>

8 51

376

30

161<sup>5</sup>

50

111<sup>5</sup>

KÜCHE 10.60

DIELE 11.65

GARD. 4.22

WC 2.93

ESSEN 15.51

WOHNEN 29.86

TERRASSE

24

412<sup>5</sup>

11<sup>5</sup>

612<sup>5</sup>

24

75

210

24

11<sup>5</sup>

101

24

487<sup>5</sup>

24

322

75

50

30

50

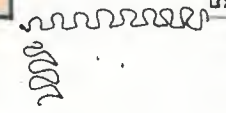
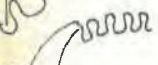
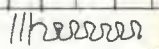
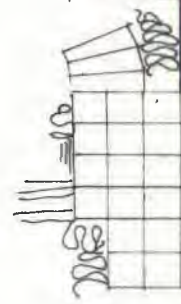
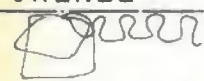
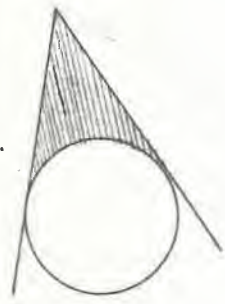
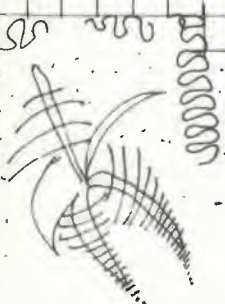
8 87<sup>5</sup>

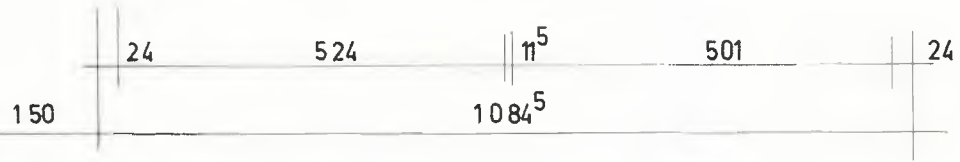
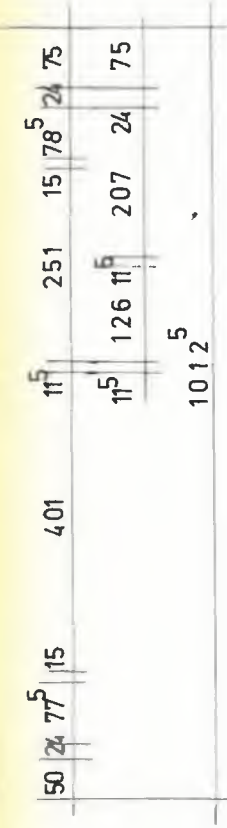
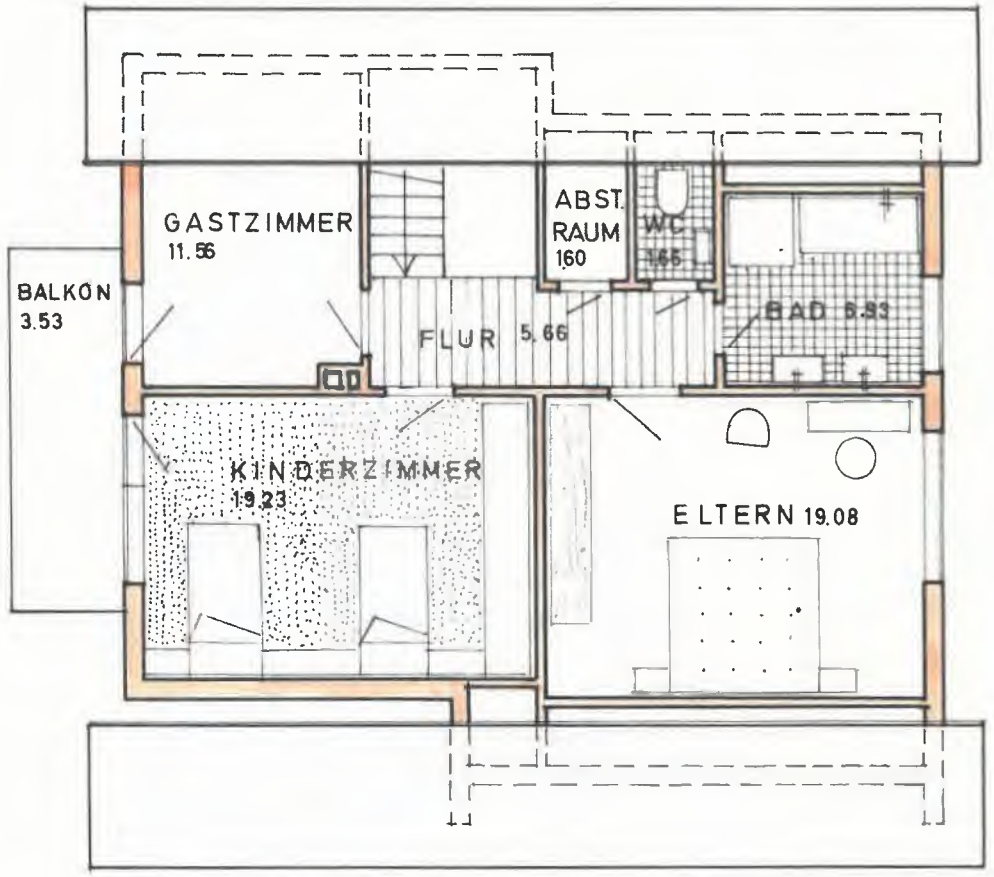
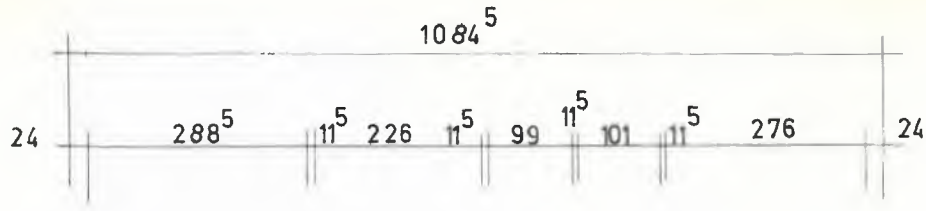
322

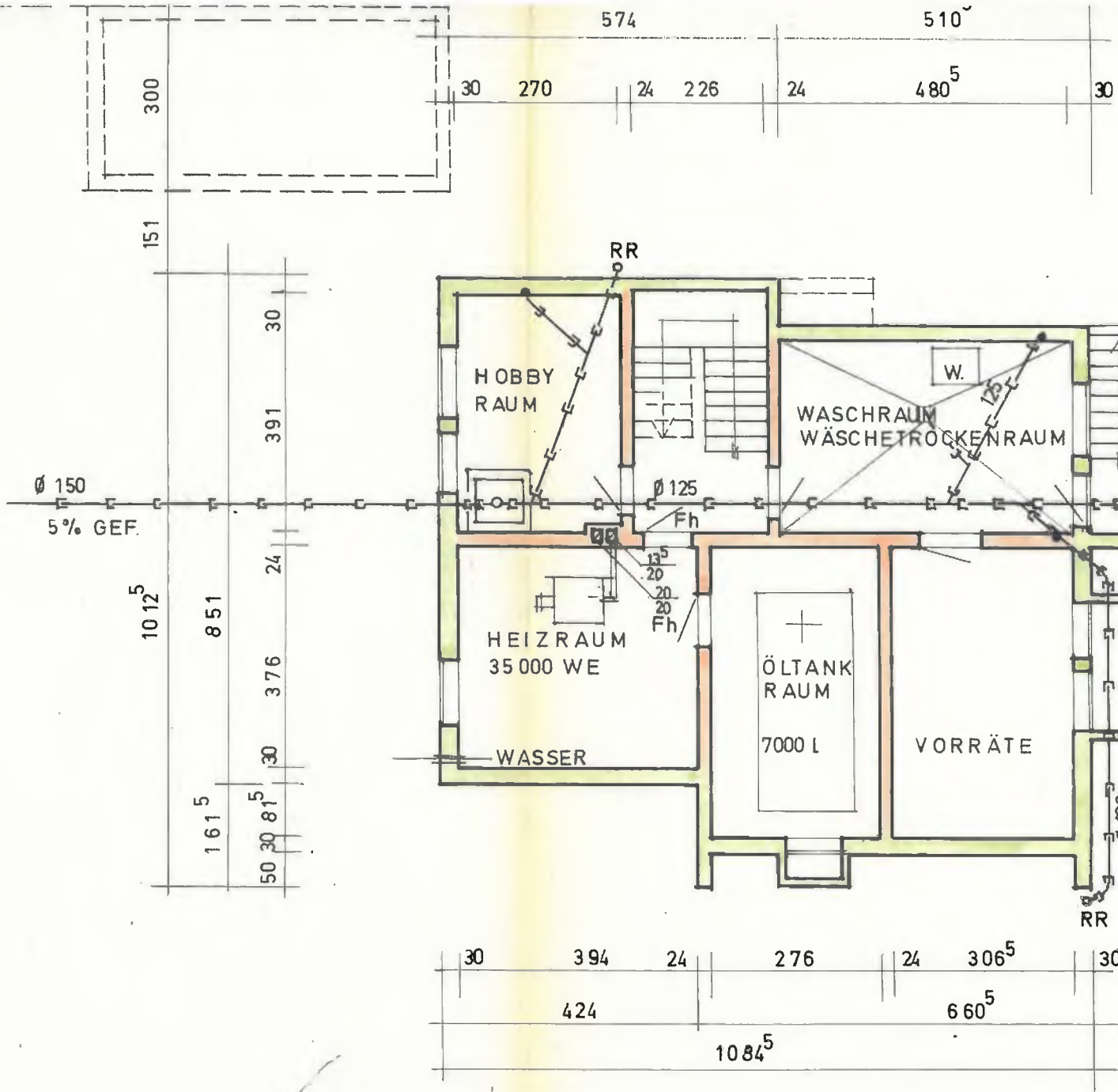
75

50

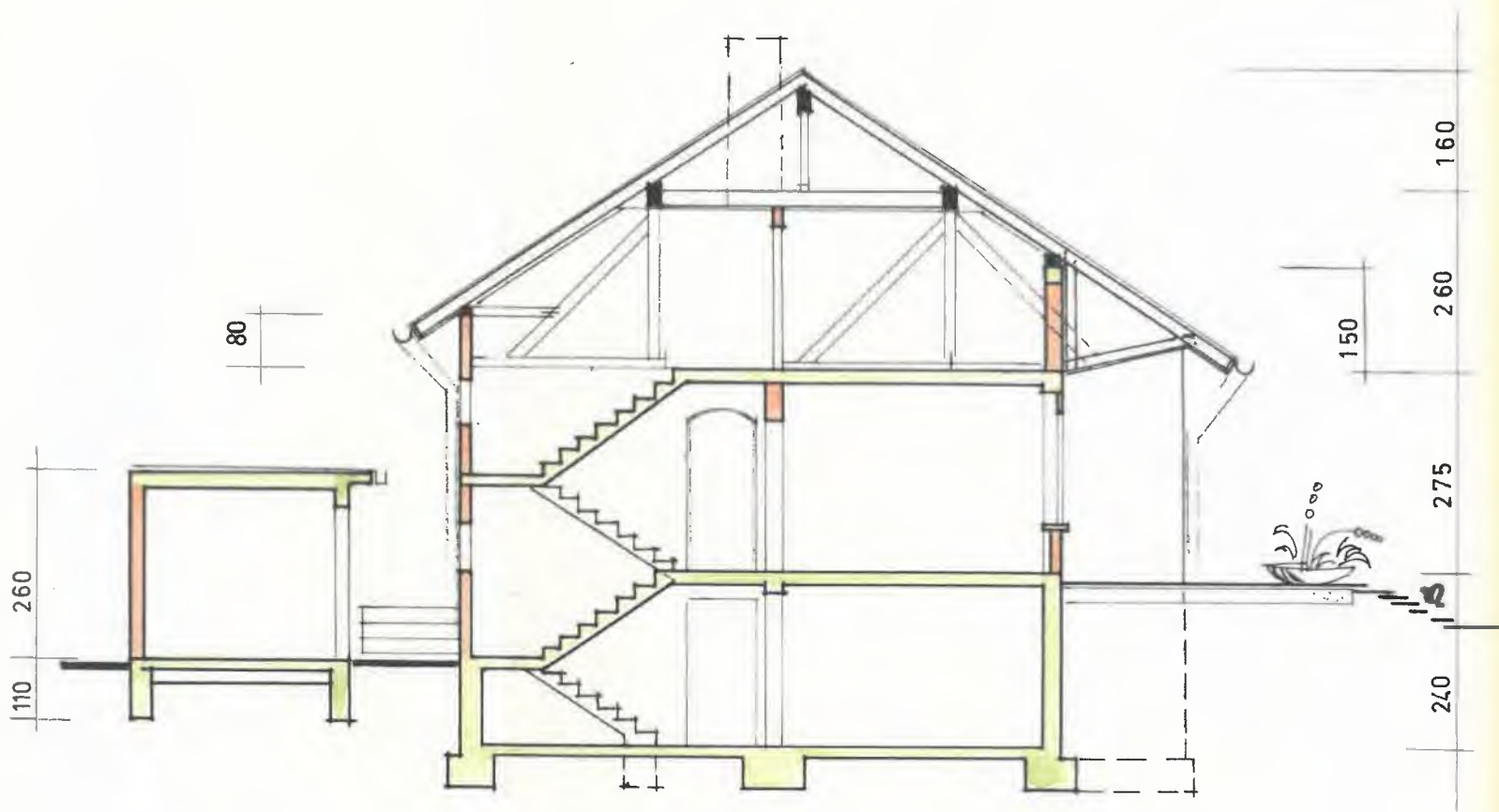
F



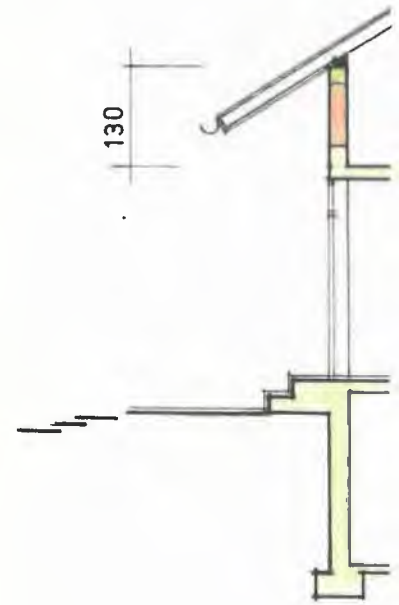




1012



SCHNITT 1-1



SC