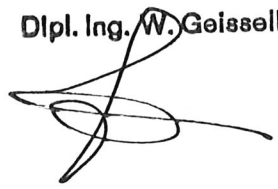


ENTWURF

5. MAI 1995

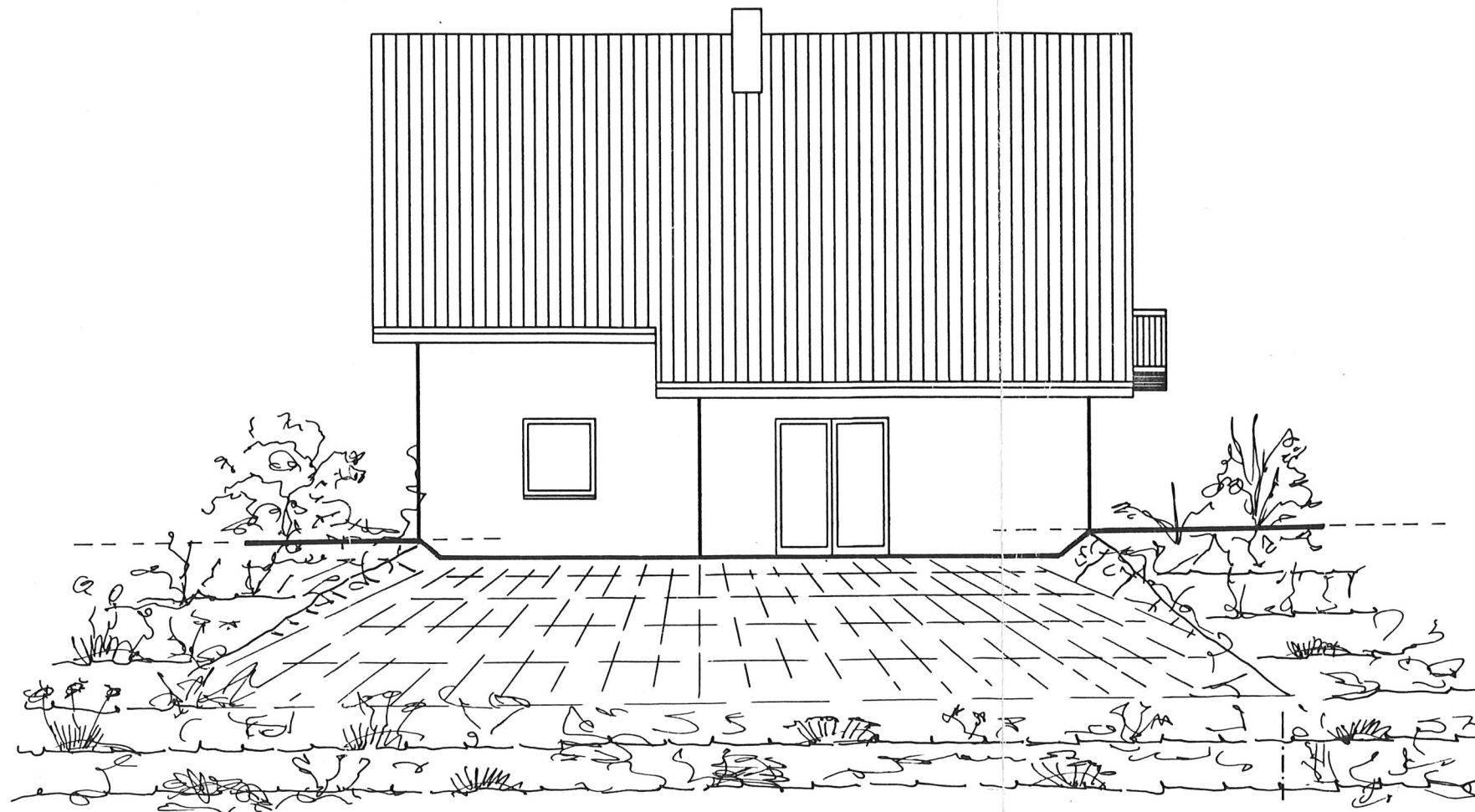
Dipl. Ing. W. Geisselbrecht



BVH. TRESKOW

BAU-NR. 35416-630

ANSICHT VON NORD-WEST

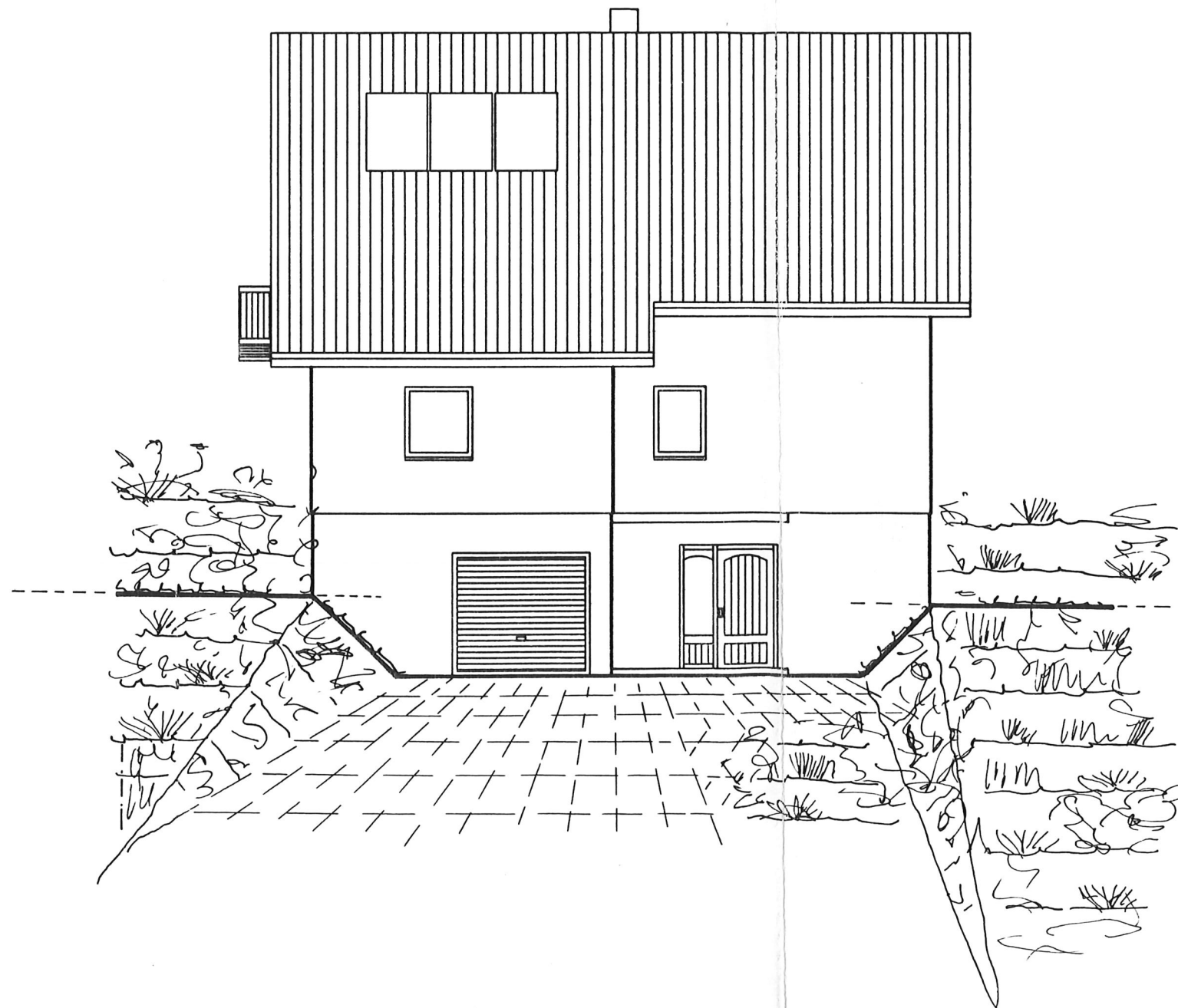
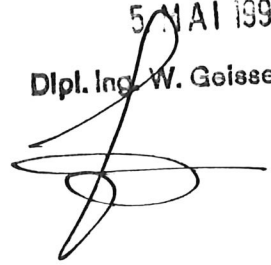


BVH. TRESKOW
BAU-NR. 35416-630
ANSICHT VON SUED-OST

ENTWURF

5. MAI 1995

Dipl. Ing. W. Geisselbrecht

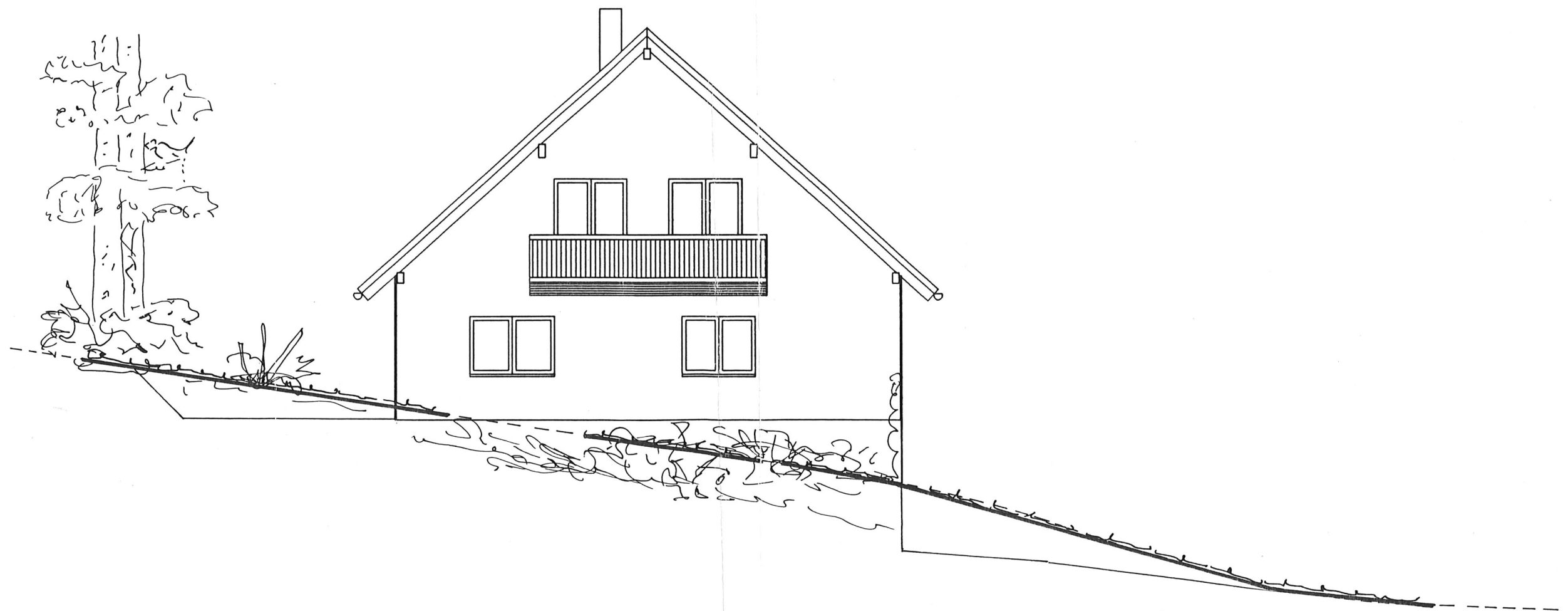
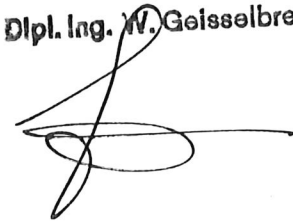


BVH. TRESKOW
BAU-NR. 35416-630
ANSICHT VON SUED-WEST

ENTWURF

5. MAI 1995

Dipl. Ing. W. Geisselbrecht

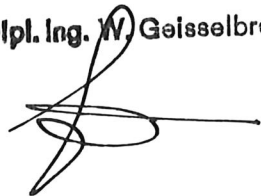


BVH. TRESKOW
BAU-NR. 35416-630
ANSICHT VON NORD-OST

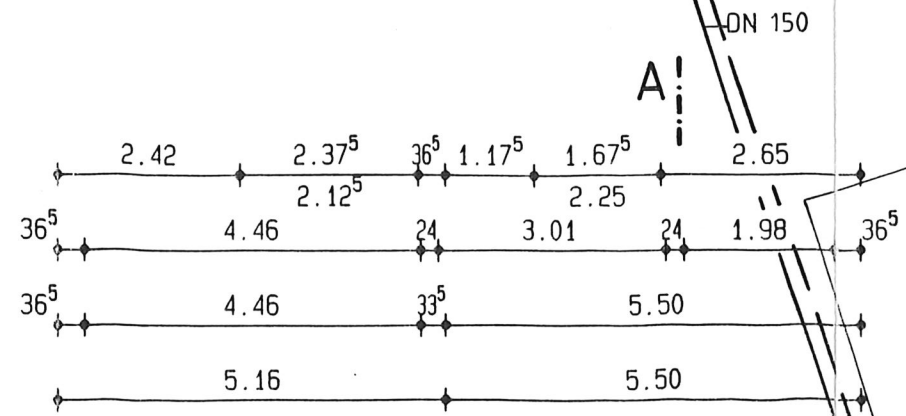
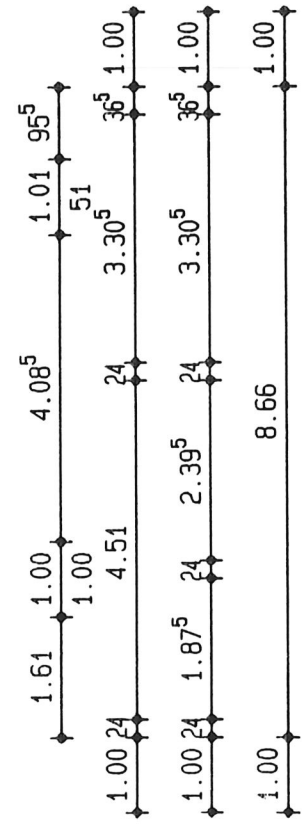
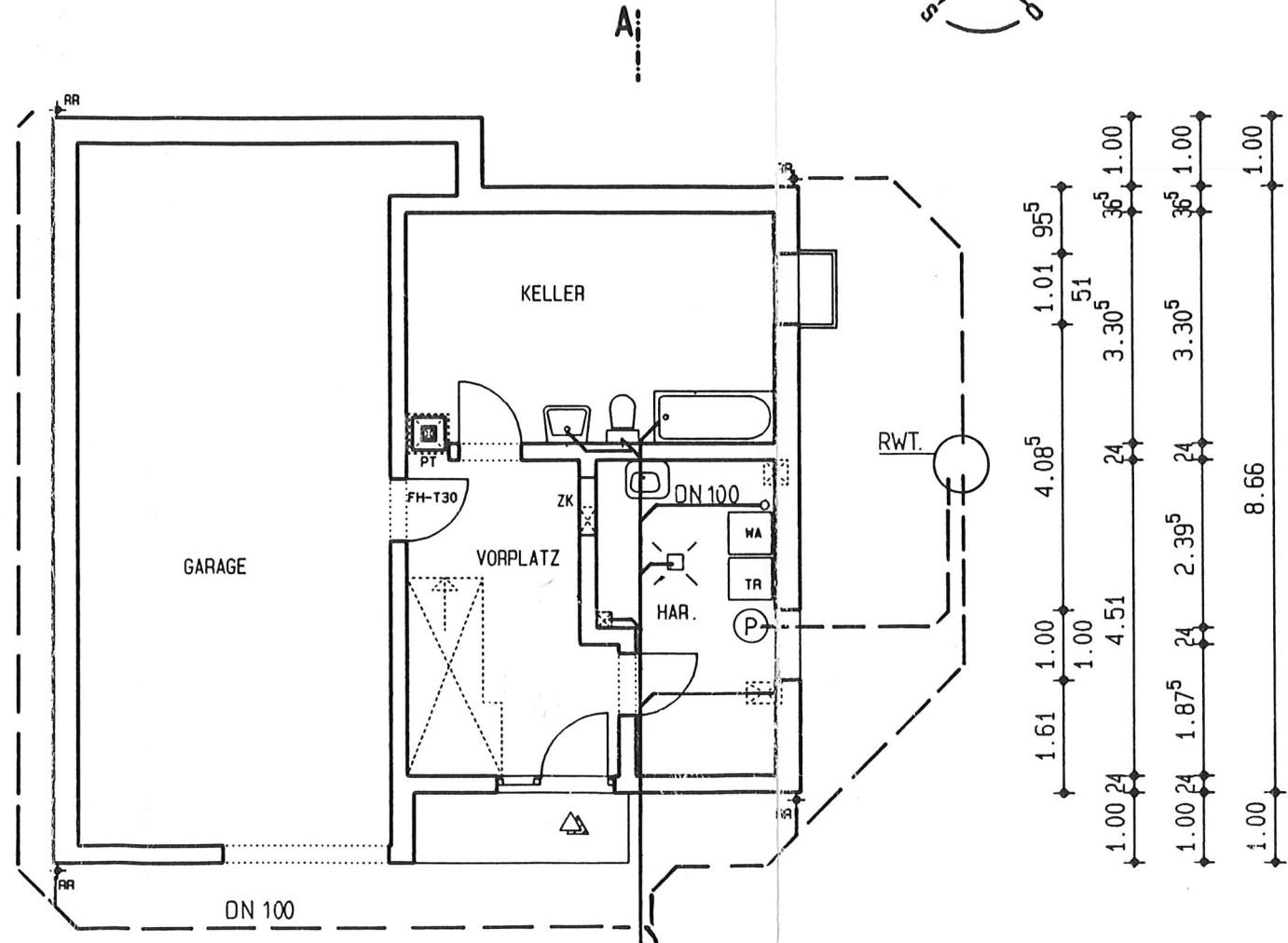
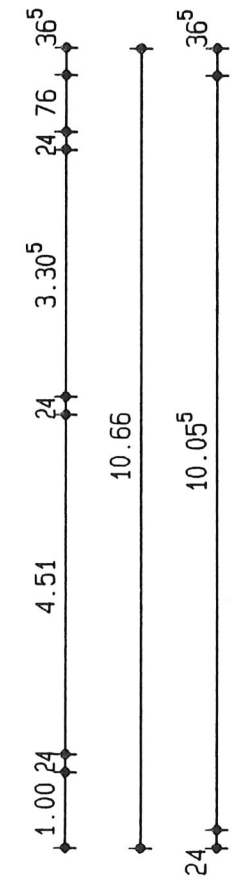
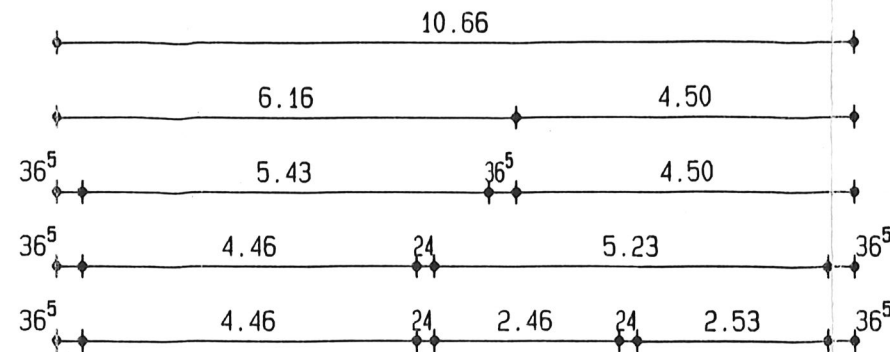
ENTWURF

5. MAI 1995

Dipl. Ing. W. Geisselbrecht



BVH. TRESKOW
 BAU-NR. 35416-630
 GRUNDRISS KG



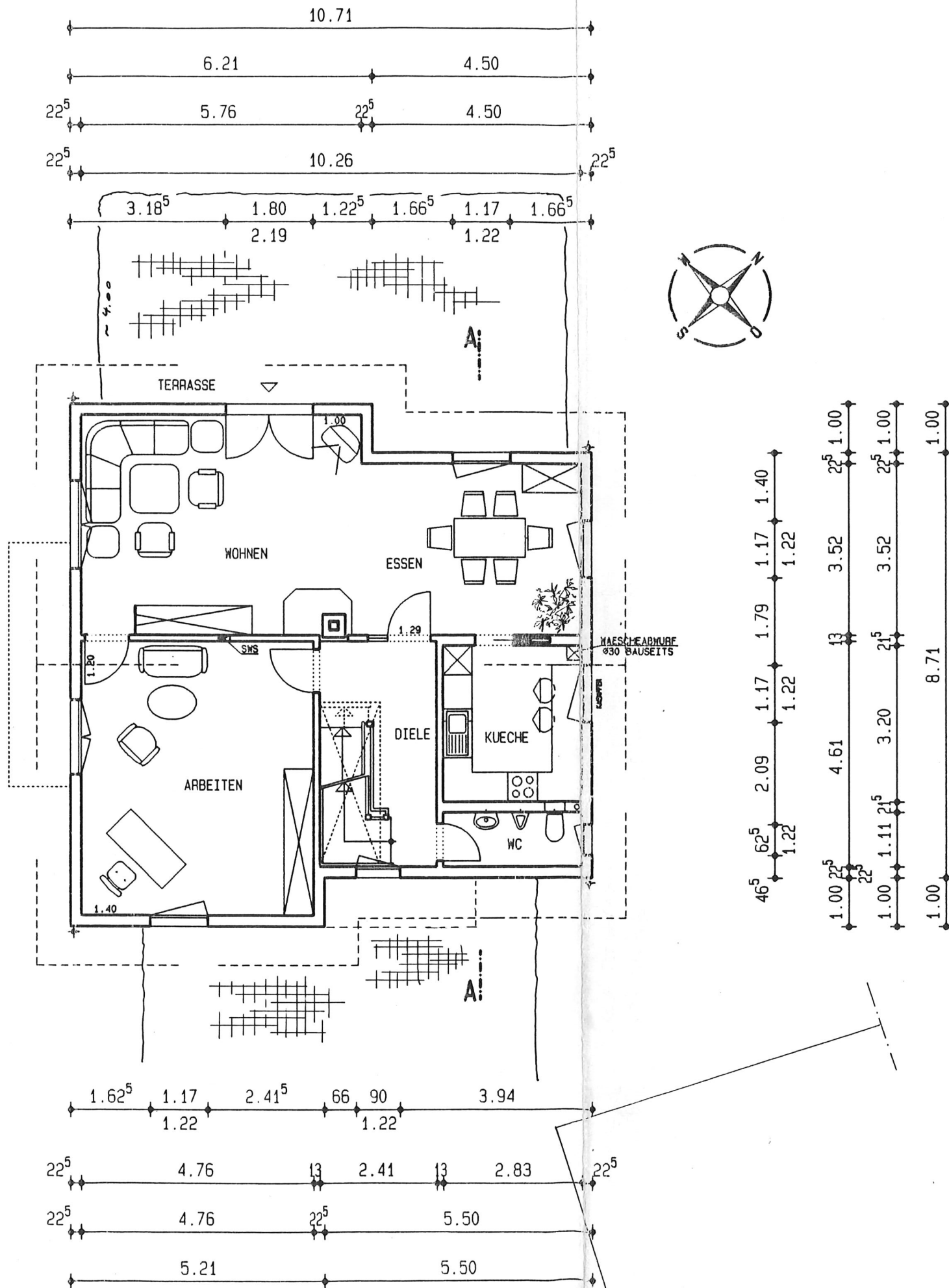
VORH. GEBÄUDE

ENTWURF

5. MAI 1995

Dipl. Ing. W. Geisselbrecht

BVH. TRESKOW
 BAU-NR. 35416-630
 GRUNDRISS EG

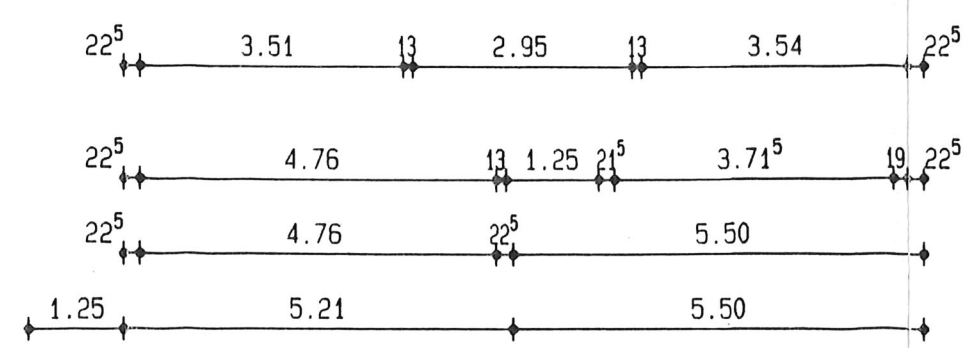
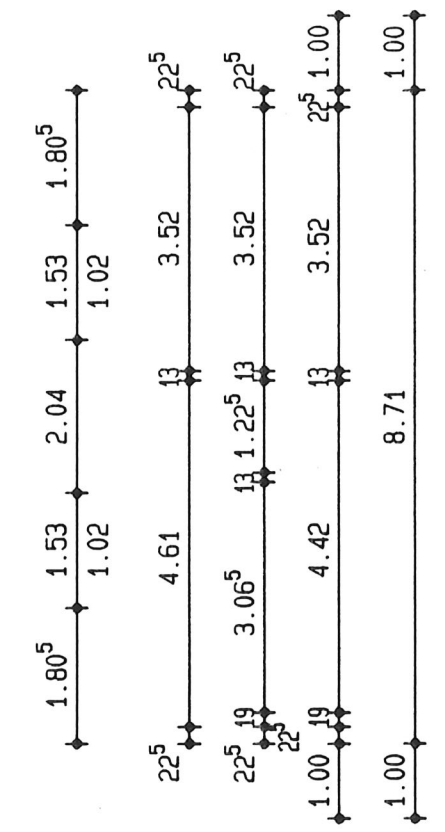
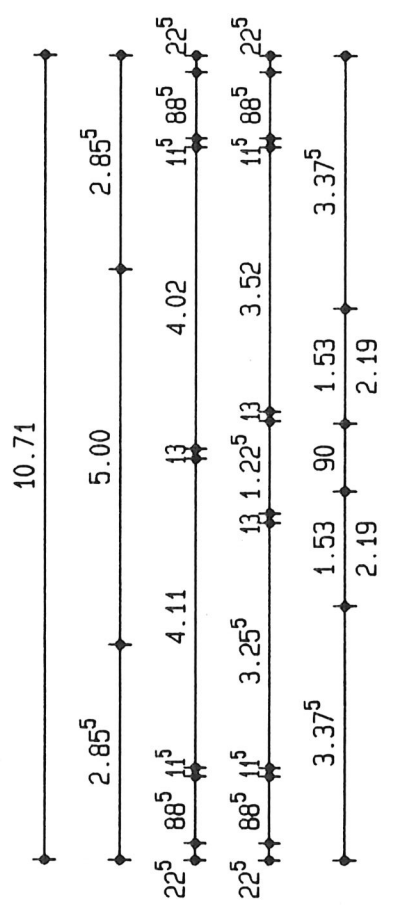
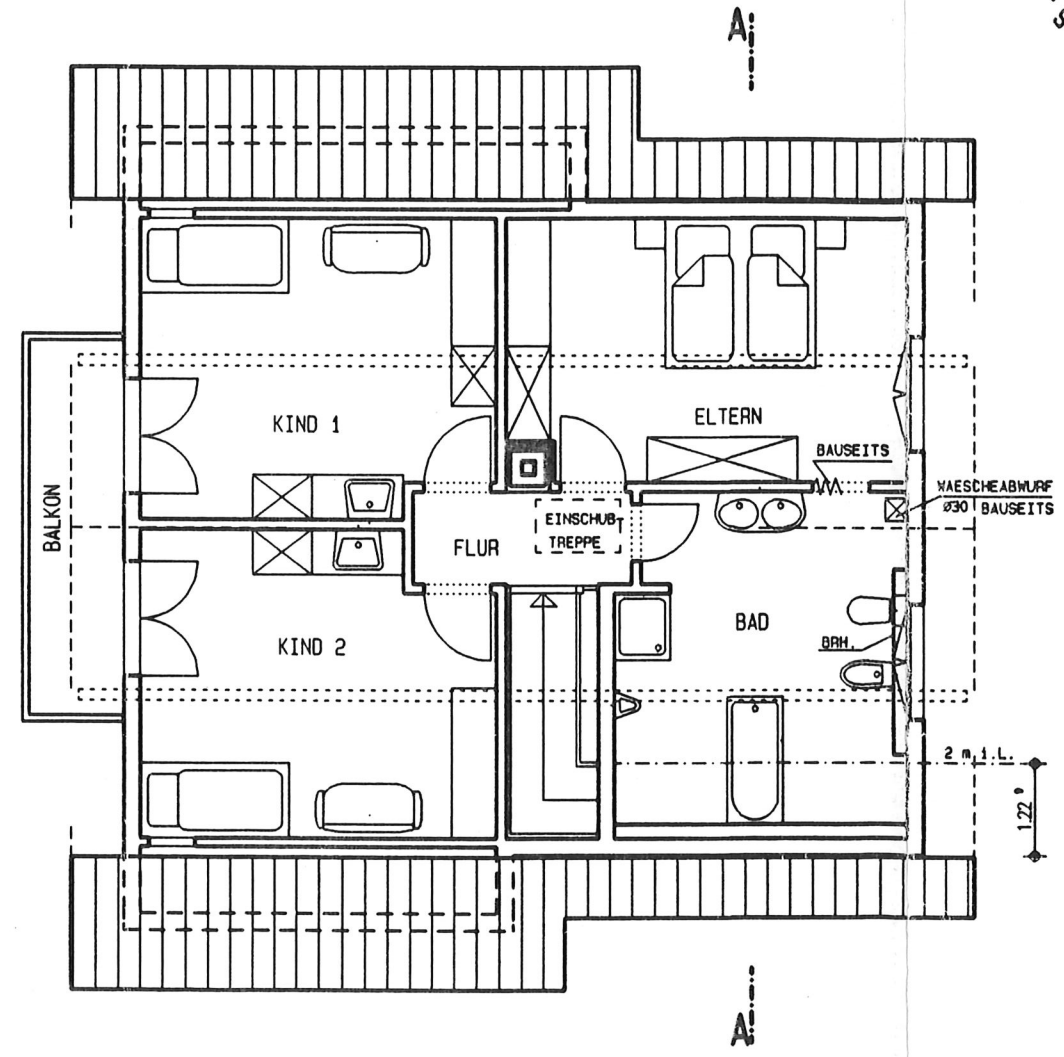
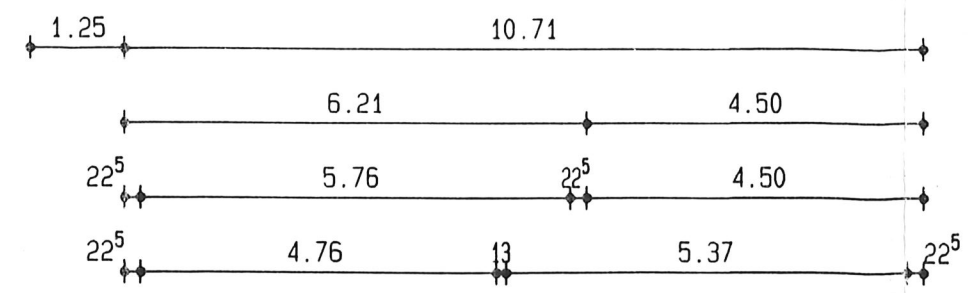


ENTWURF

5. MAI 1995

Dipl. Ing. W. Geisselbrecht

BVH. TRESKOW
 BAU-NR. 35416-630
 GRUNDRISS DG



ENTWURF

5. MAI 1995

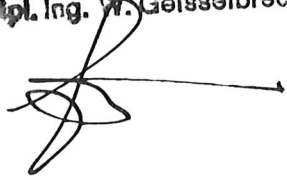
Dipl. Ing. W. Gaisselbrecht



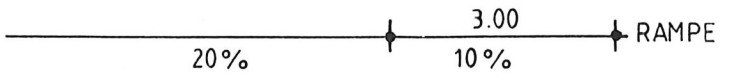
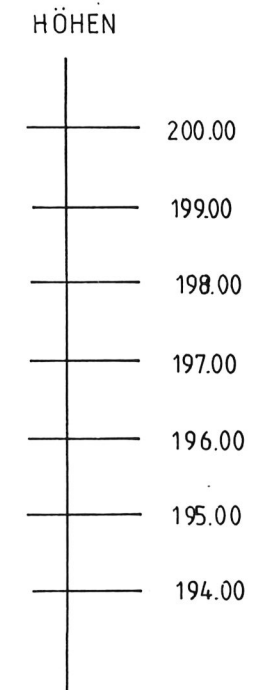
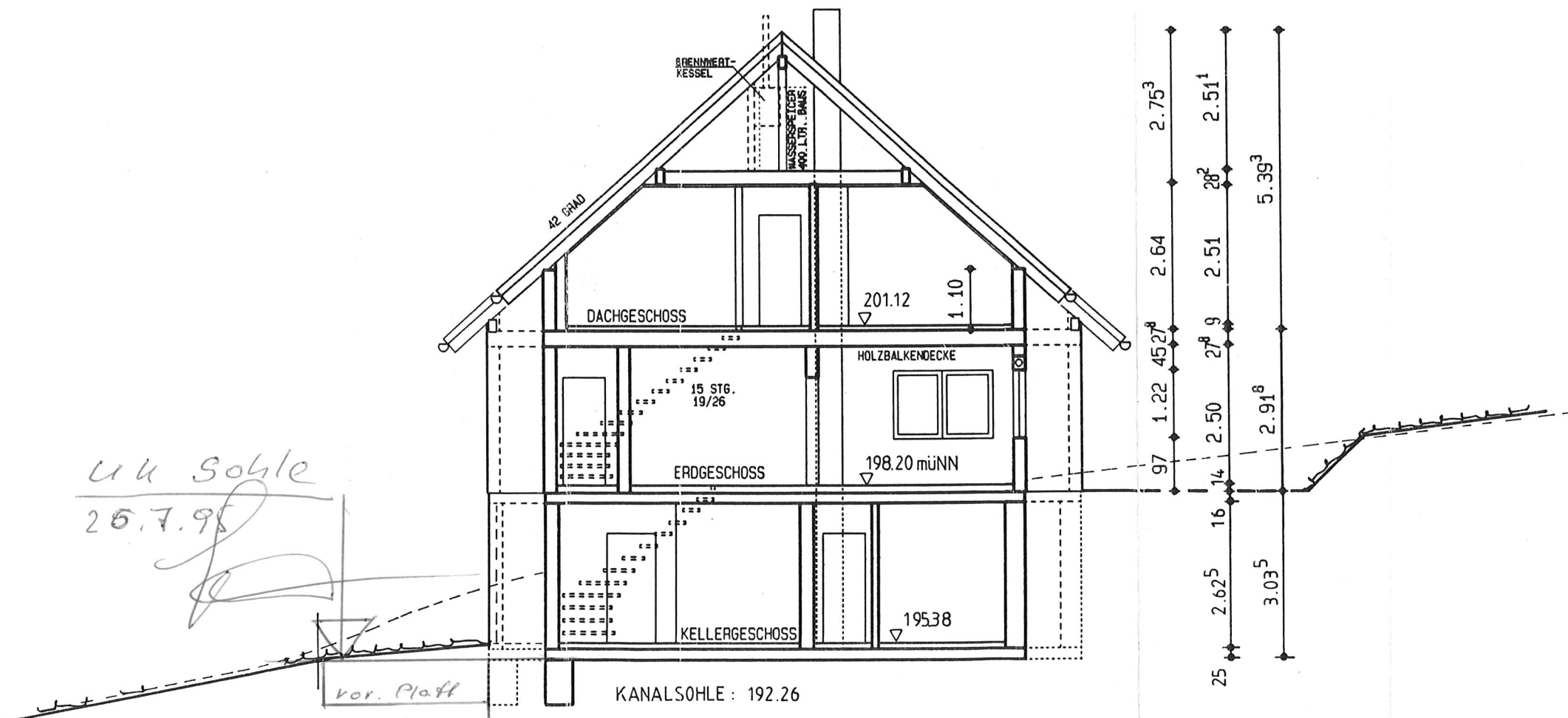
ENTWURF

5. MAI 1995

Dipl. Ing. W. Geisselbrecht



BVH. TRESKOW
 BAU-NR. 35416-630
 SCHNITT A-A



--- VORHANDENES GELÄNDE
 GEPLANTES GELÄNDE