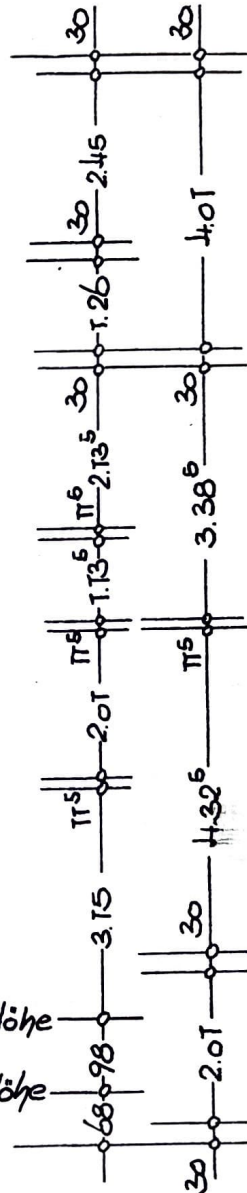
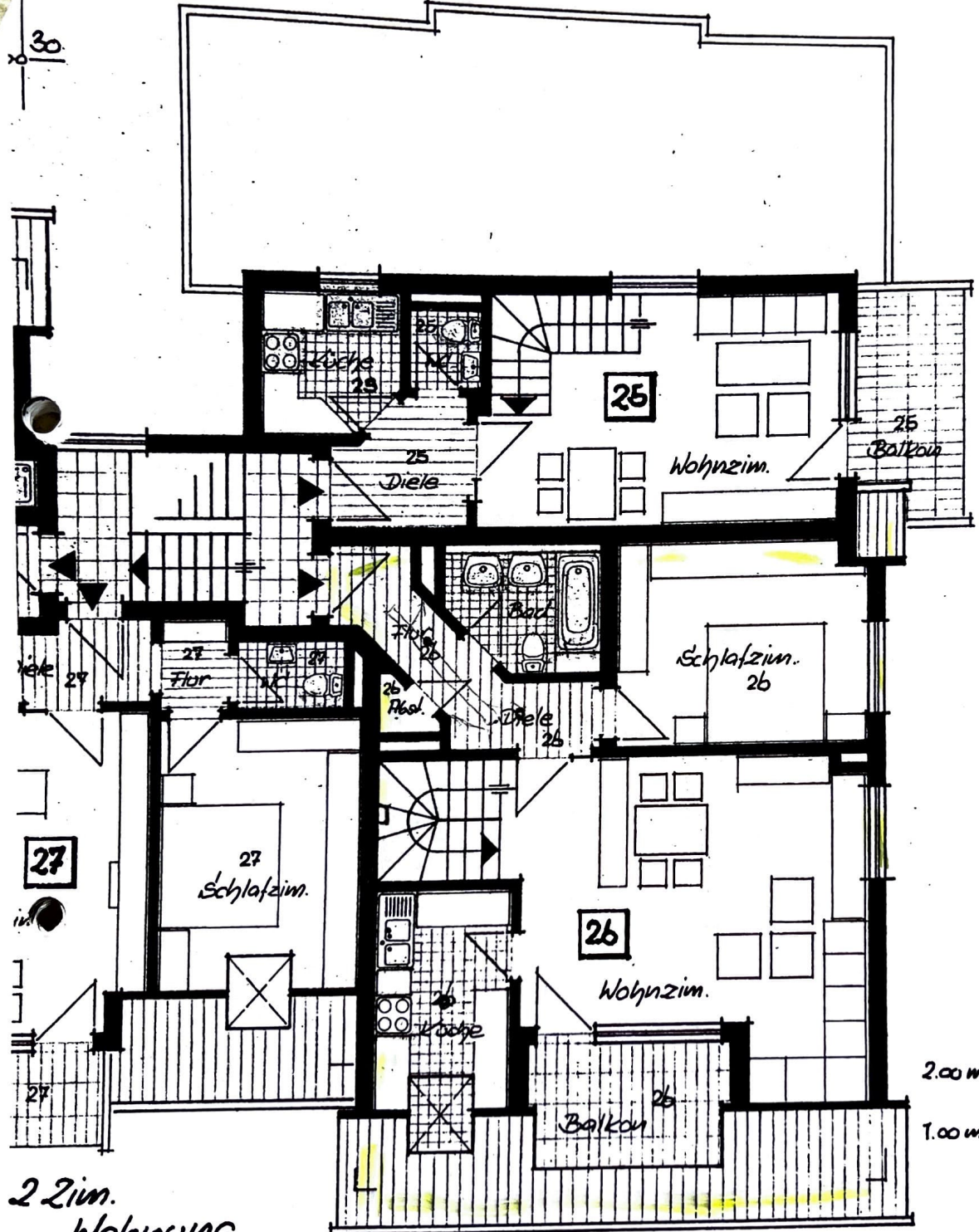


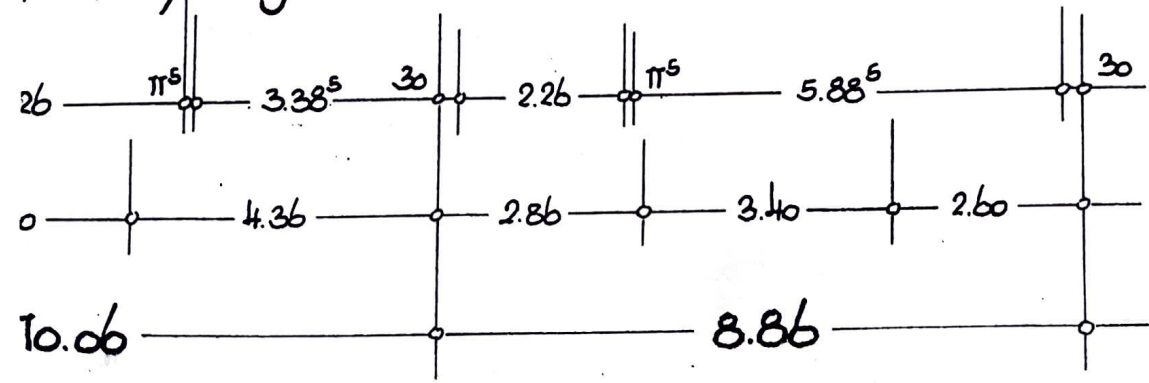
20
 228
 115
 626,5
 30
 50

 975,5

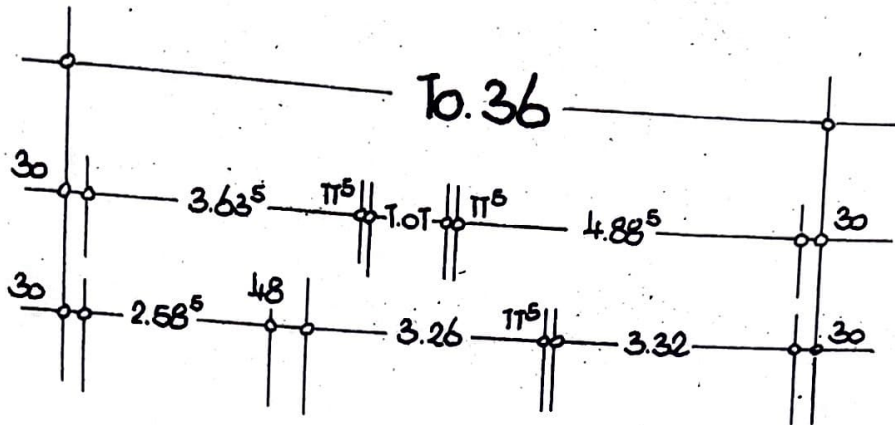


2.00 m Höhe
 1.00 m Höhe

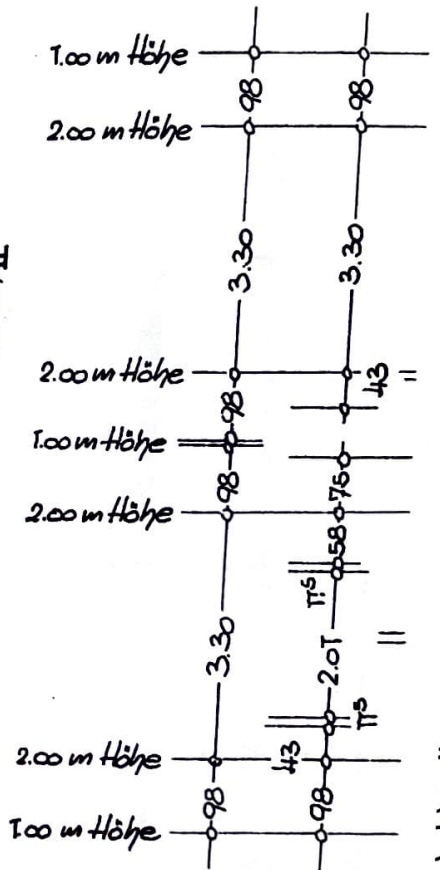
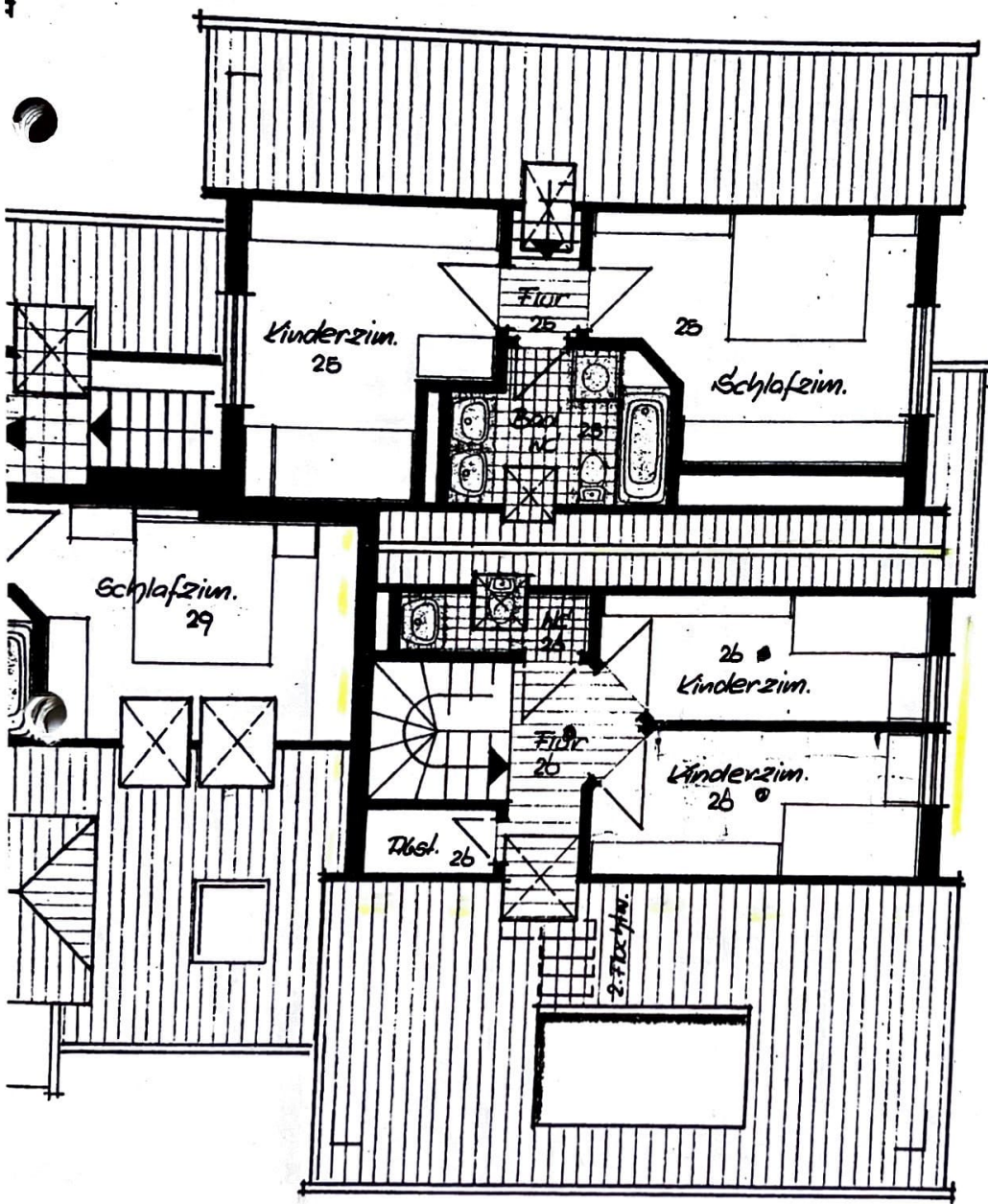
2 Zim. Wohnung



Grundfläche
 $8,26 \times 10,135 =$
 $83,31 \text{ m}^2$



2,55 x 5,08
Winderzimmer



Grundfl.
5,26 x 8,255
43,42

gesamt
126,75m²

