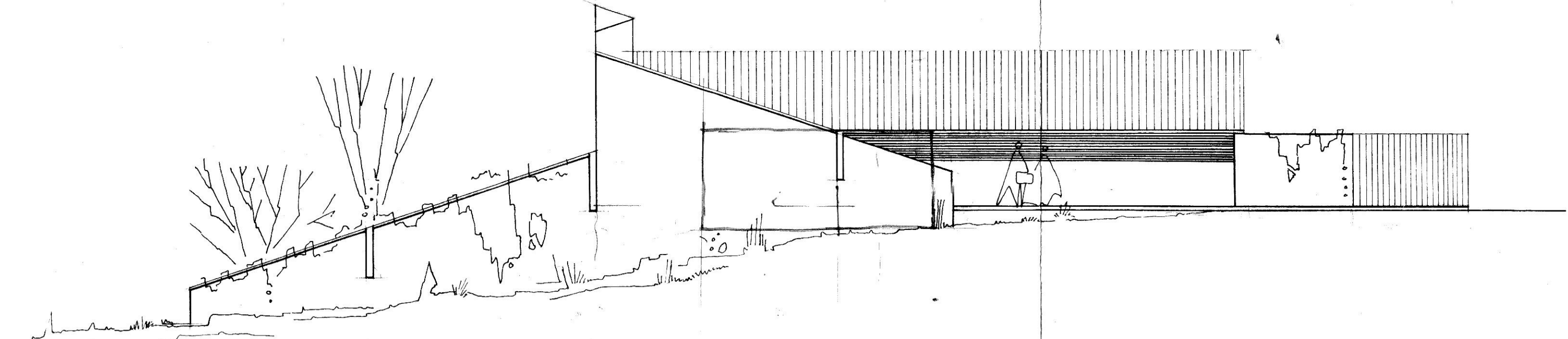
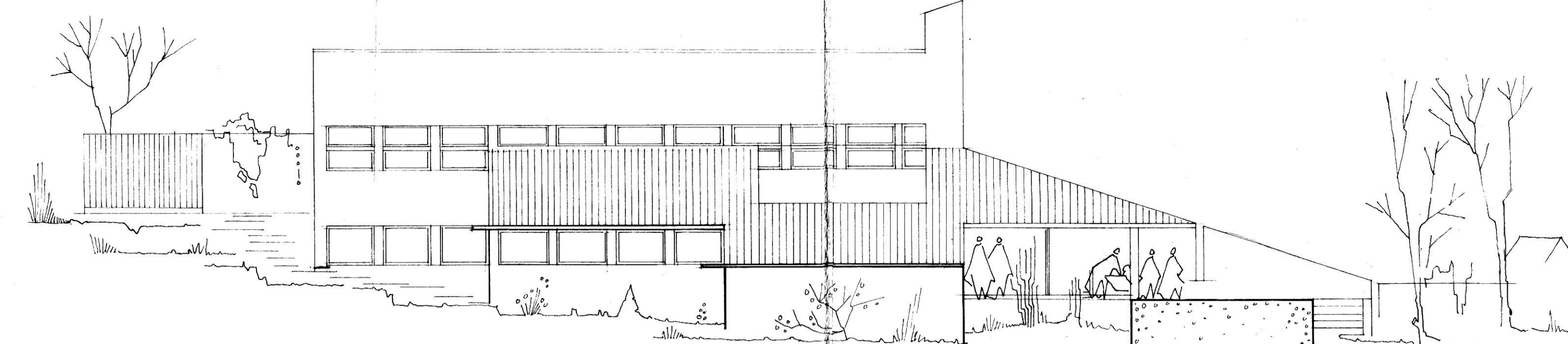


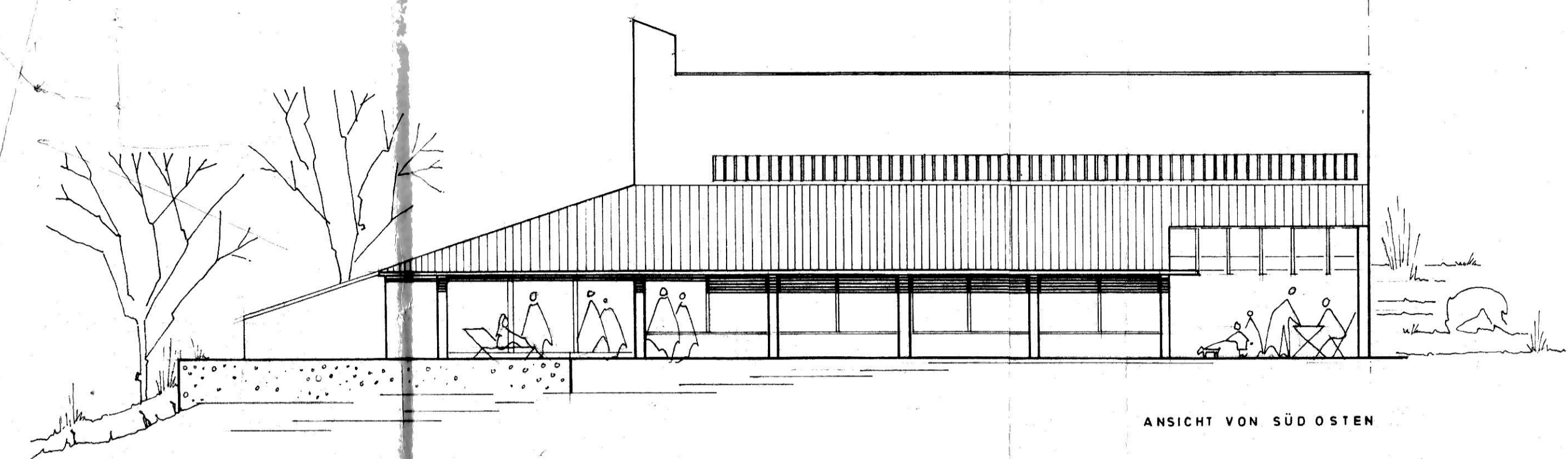
ANSICHT VON NORDWESTEN



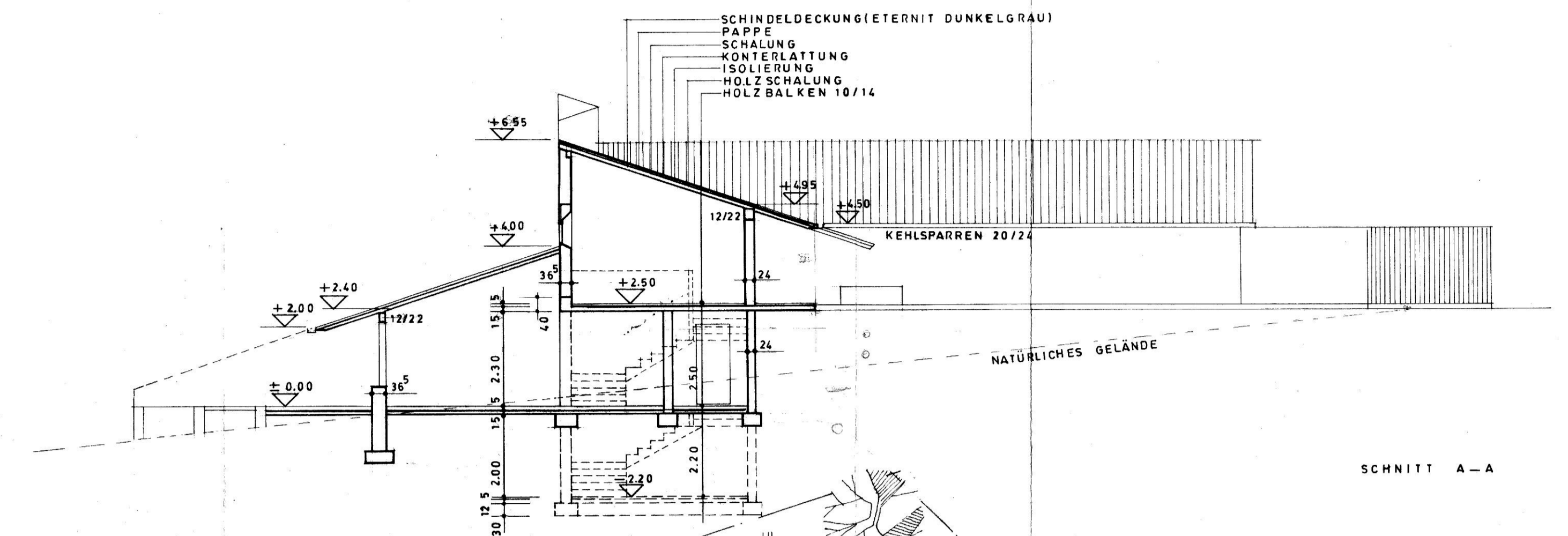
ANSICHT VON NORDOSTEN



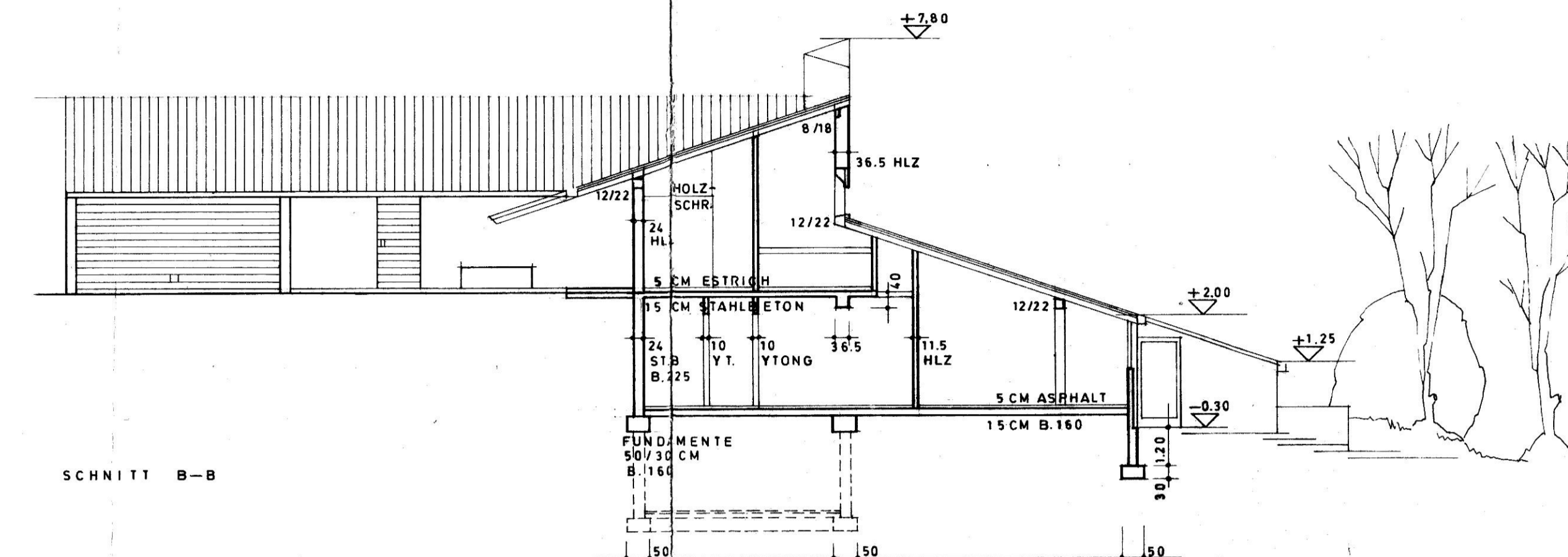
ANSICHT VON SÜDWESTEN



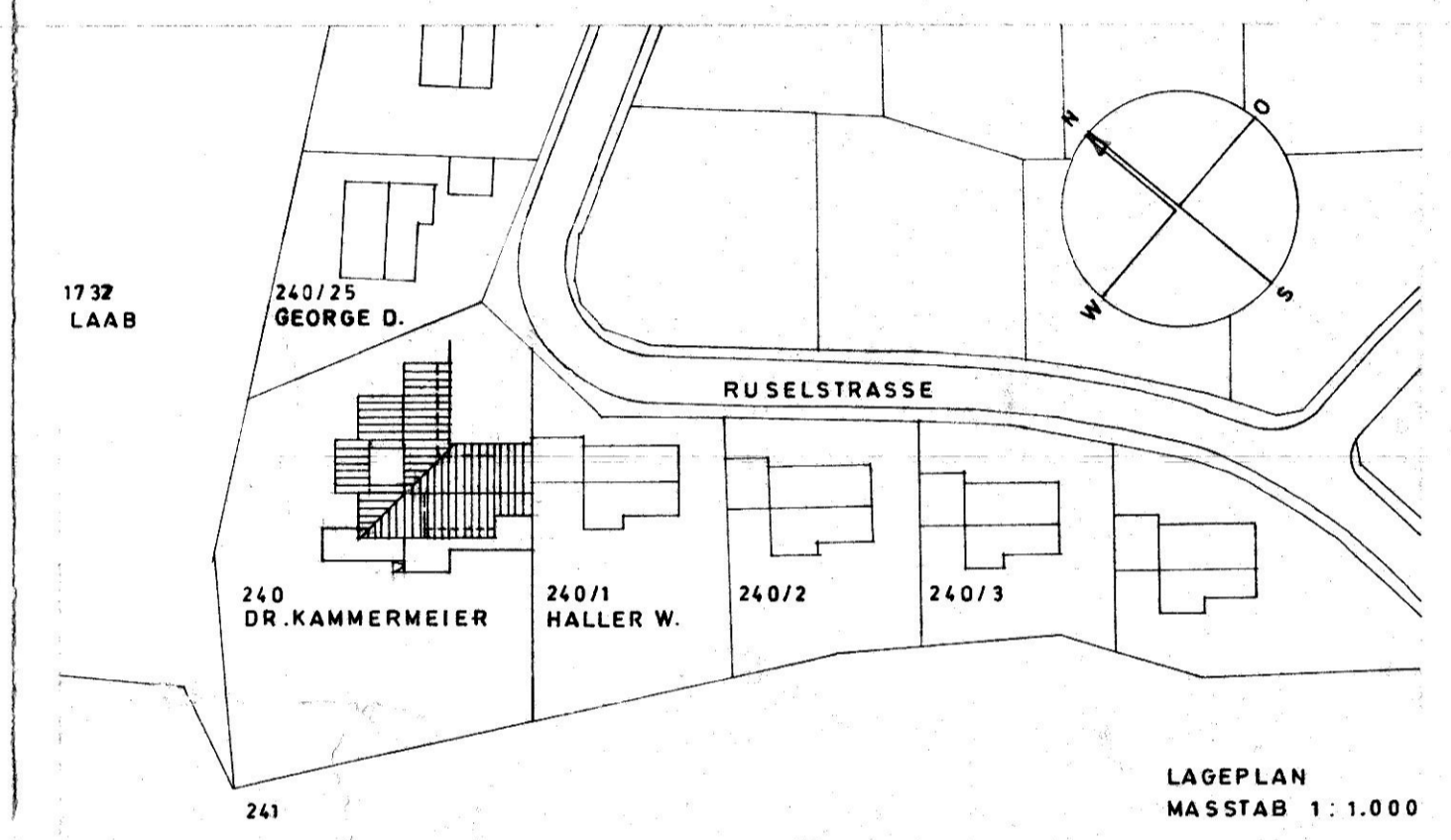
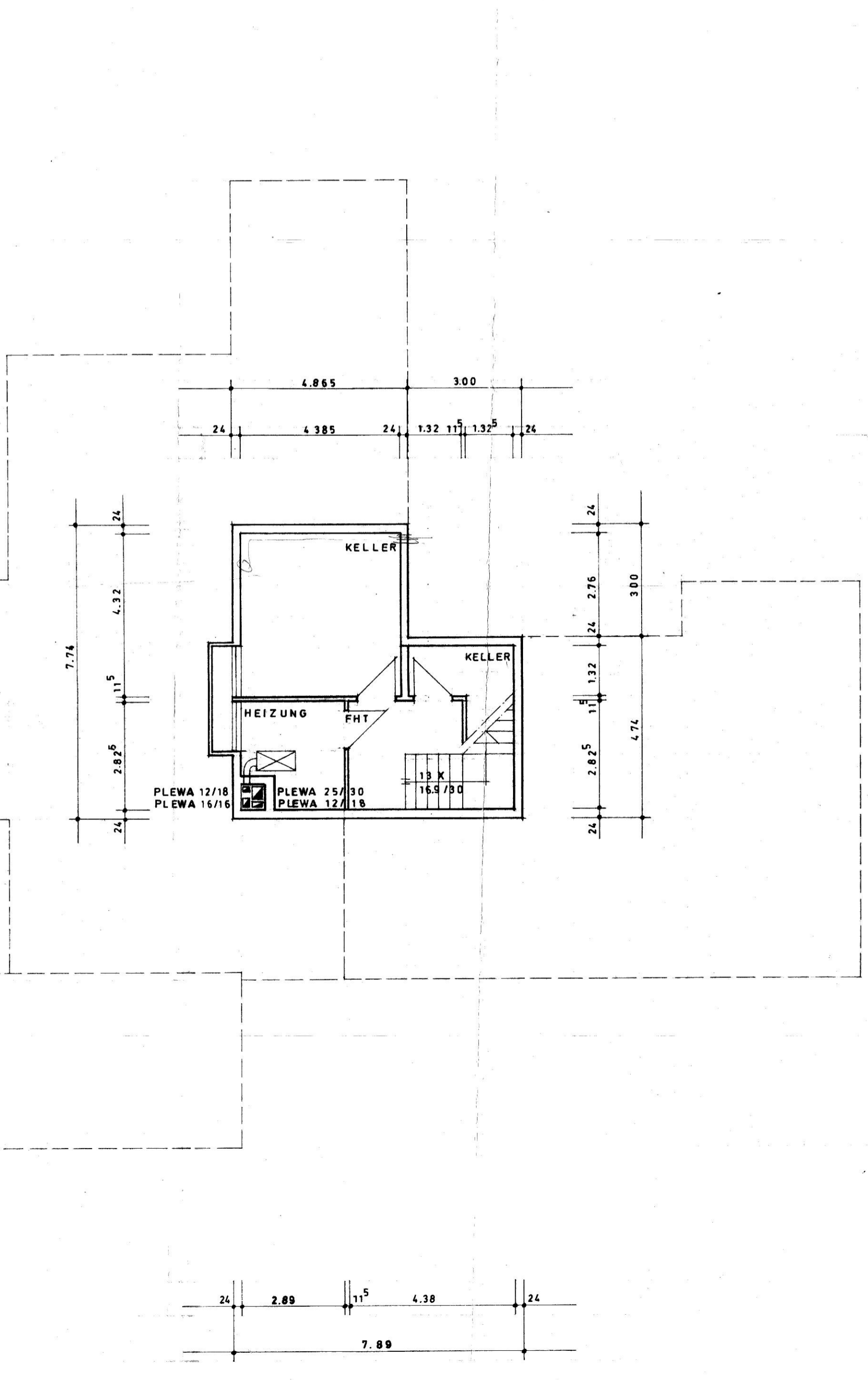
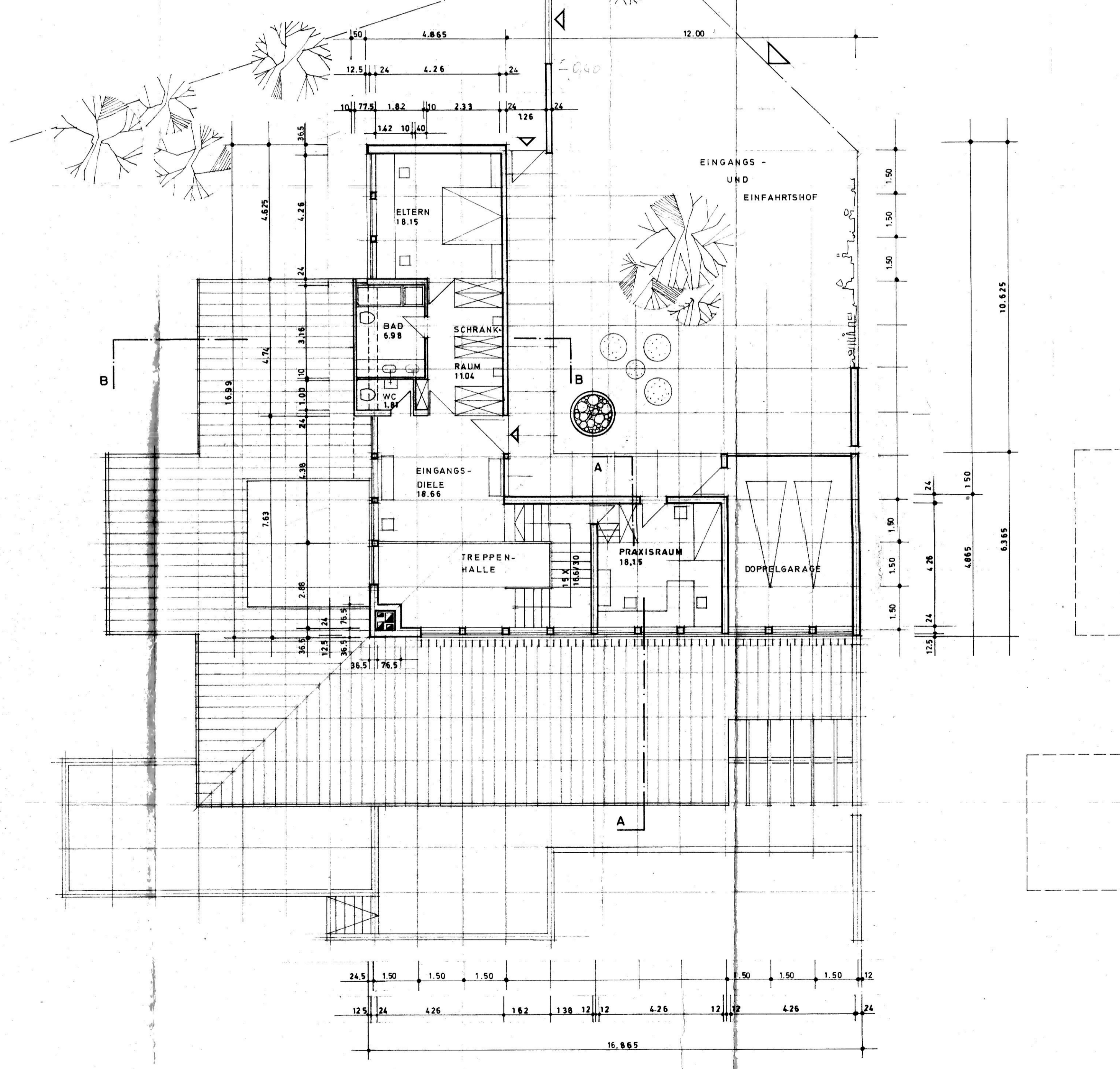
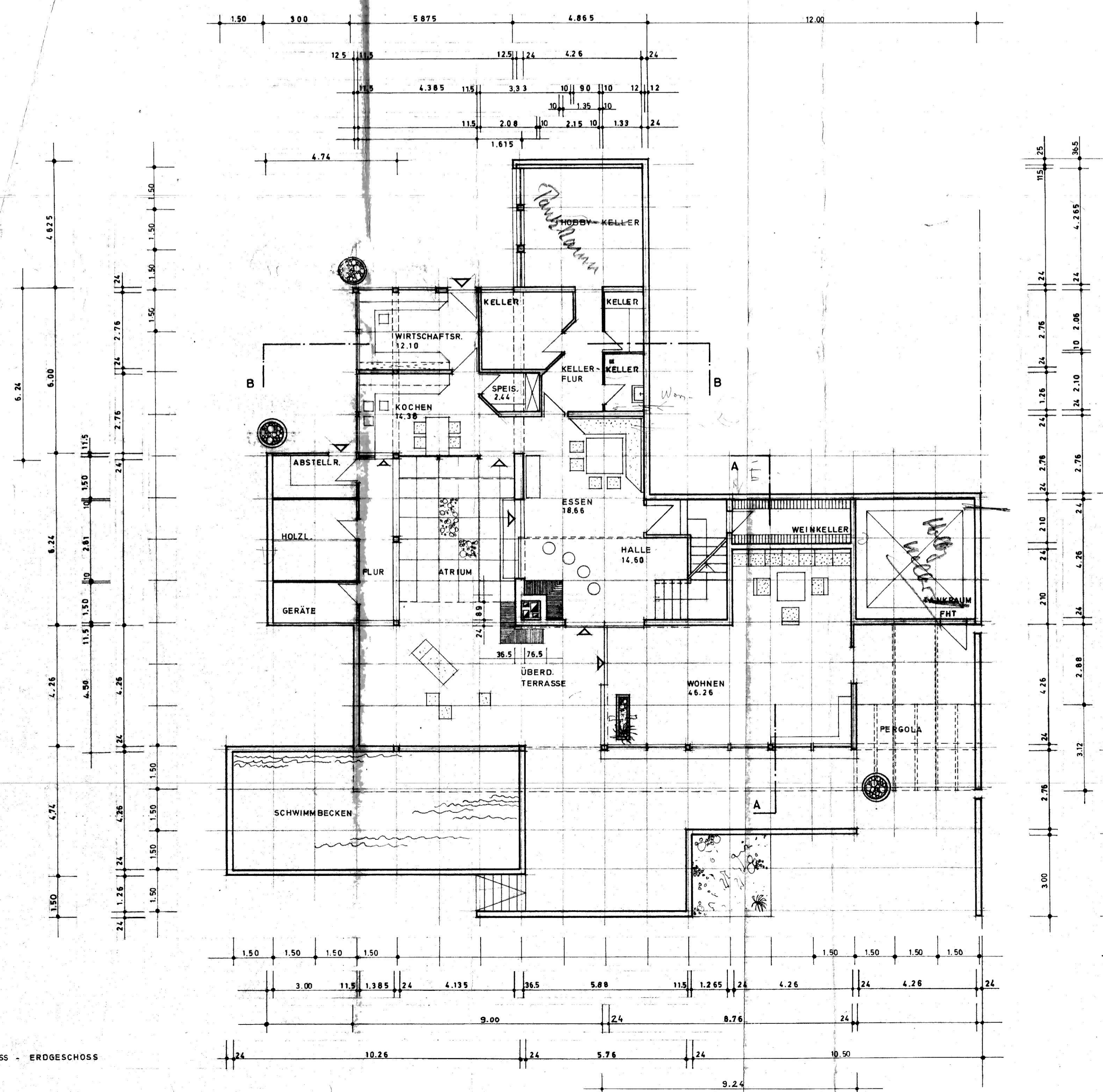
ANSICHT VON SÜD OSTEN



SCHNITT A-A



SCHNITT B-B



NACHBARN :
PLÄNE EINGEGEHEN UND ZUGESTIMMT

ARCHITEKT : W. ZEILHOEER ARCHITEKT BDA.
83 LANDSHUT AM VOGELHERD 22/B

LANDSHUT 2.11.1973