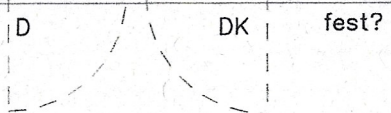




M9

elektr. Rolll.
ohne Pf. m.Pf.



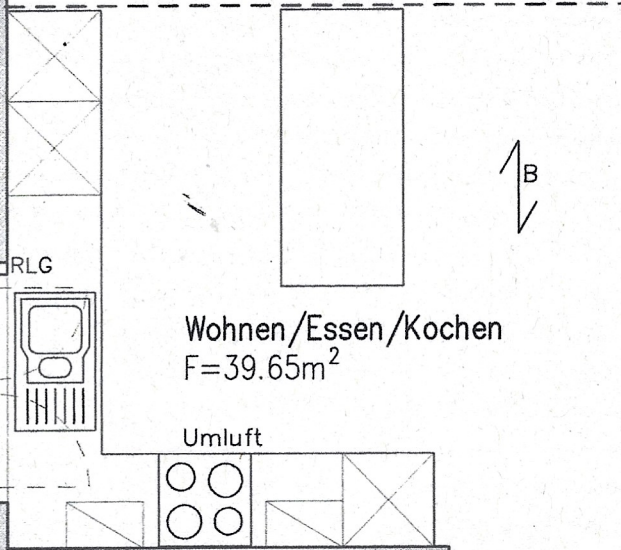
* 104.46

ohne Rolll.
einteilig
nur kipp

FFB= 105.21 m ü.NN
EFH=RFB= 105.08 m ü.NN
▽±0.00 ▽+0.13

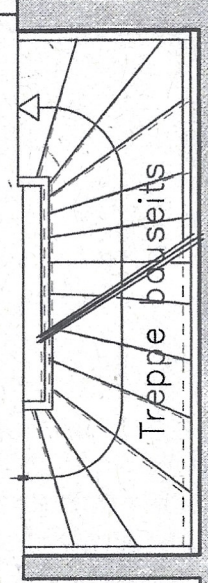
Ort bauseits
t= 102.40 m ü.NN
-2.68 v.EFH
rdach

UZ



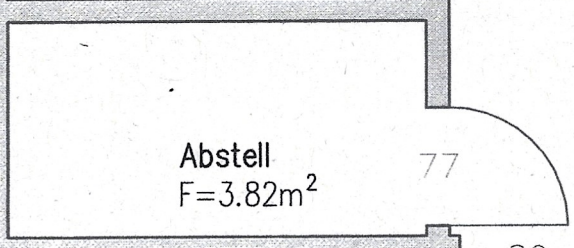
Wohnen/Essen/Kochen
F=39.65m²

Umluft



Treppe bauseits

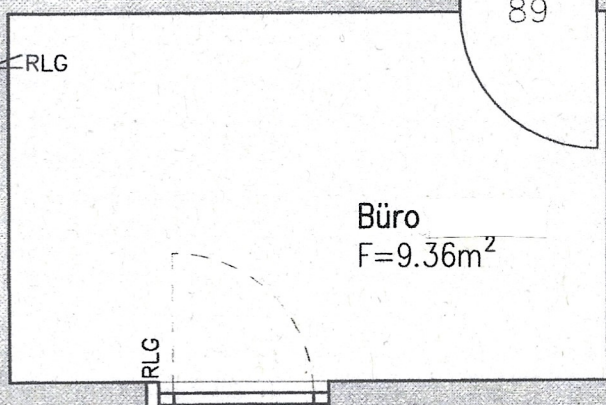
m. Kämpfer
m. Pf. BR 111⁵cm



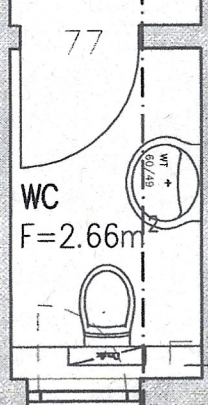
Abstell
F=3.82m²

77

* 103.38



Büro
F=9.36m²



WC
F=2.66m²

77

Ablage
136⁵m v.R
Fa Weiss

Baulinie

BR 99cm

BR 99cm
ohne Rolll.