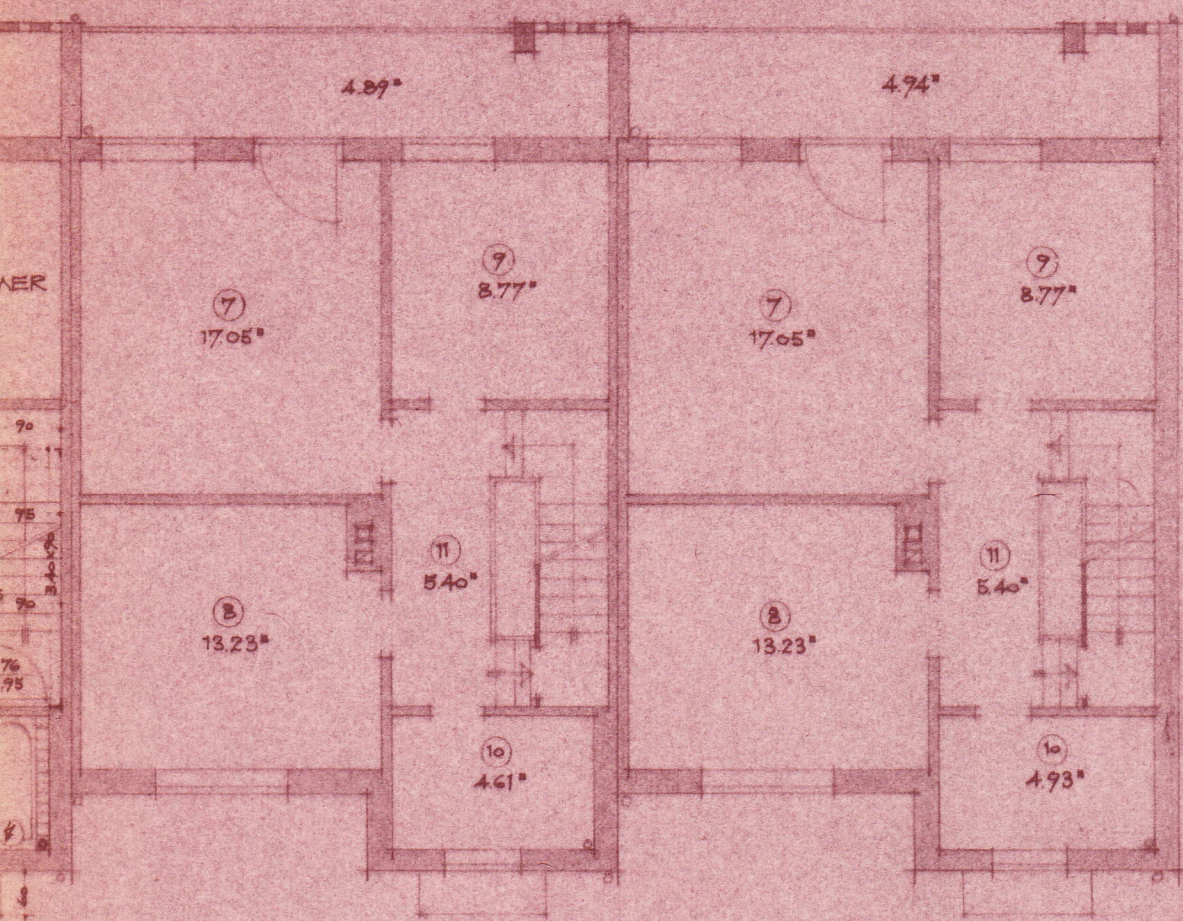


24 4.01 115 2.88^s 24 4.01 115 2.88^s 30
 1.49 25 1.26 74 1.26 2.38^s 74 1.26 1.51 25 1.49 25 1.26 74 1.26 2.38^s 74 1.26 1.51 31 1.49
 1.01 24 1.51 24 1.01 24



1.50
 30
 3.13^s
 4.36^s
 115
 5.88^s
 115
 8.61
 3.51
 30
 1.76
 1.00

1.24 1.14 1.76 1.05 1.05 1.01 1.24 1.14 1.76 1.05 1.05 1.01 1.42^s
 1.63^s 30 2.70 30
 24 4.01 115 2.88^s 24 4.01 115 2.88^s 30
 7.25 7.43
 29.36