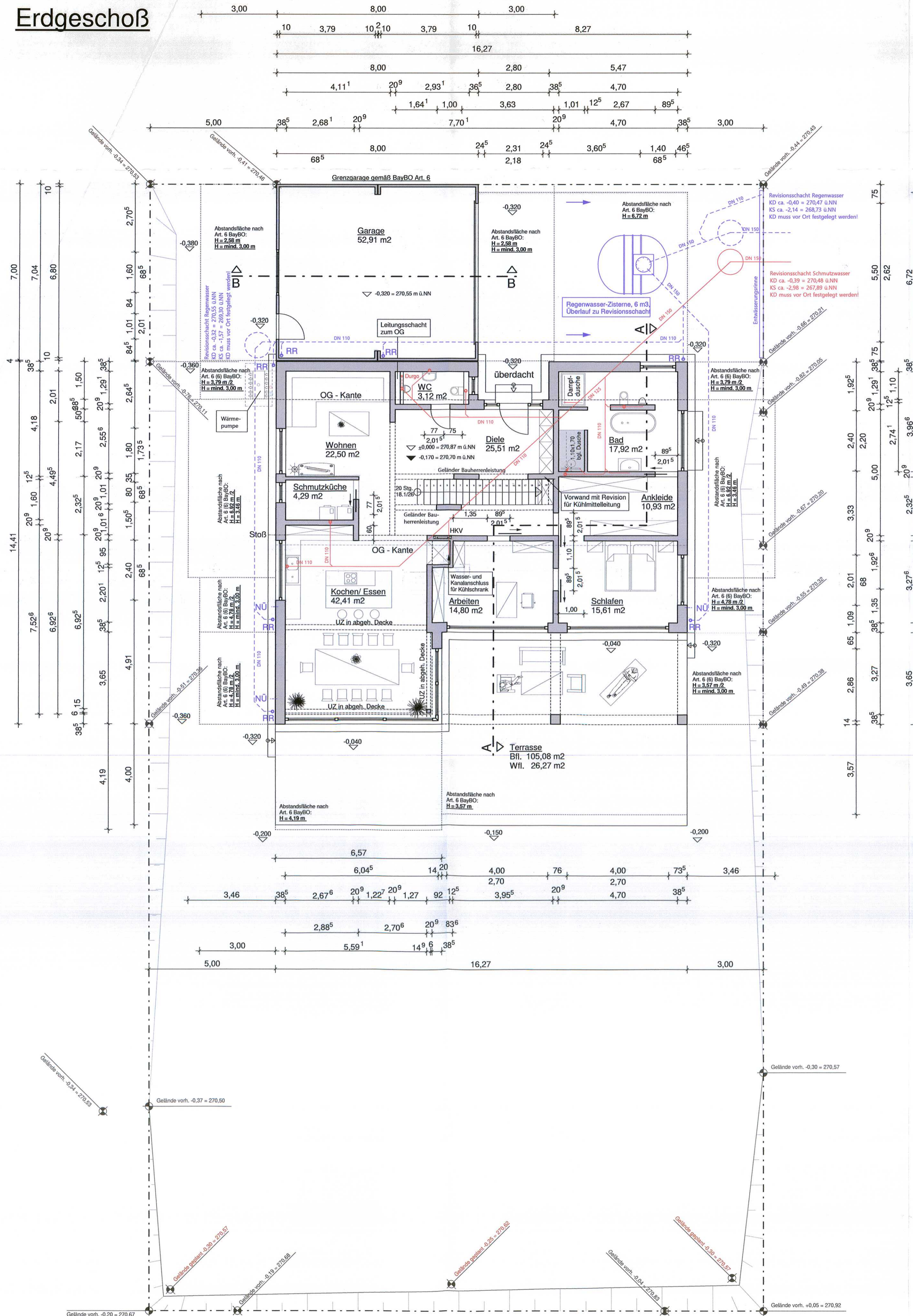
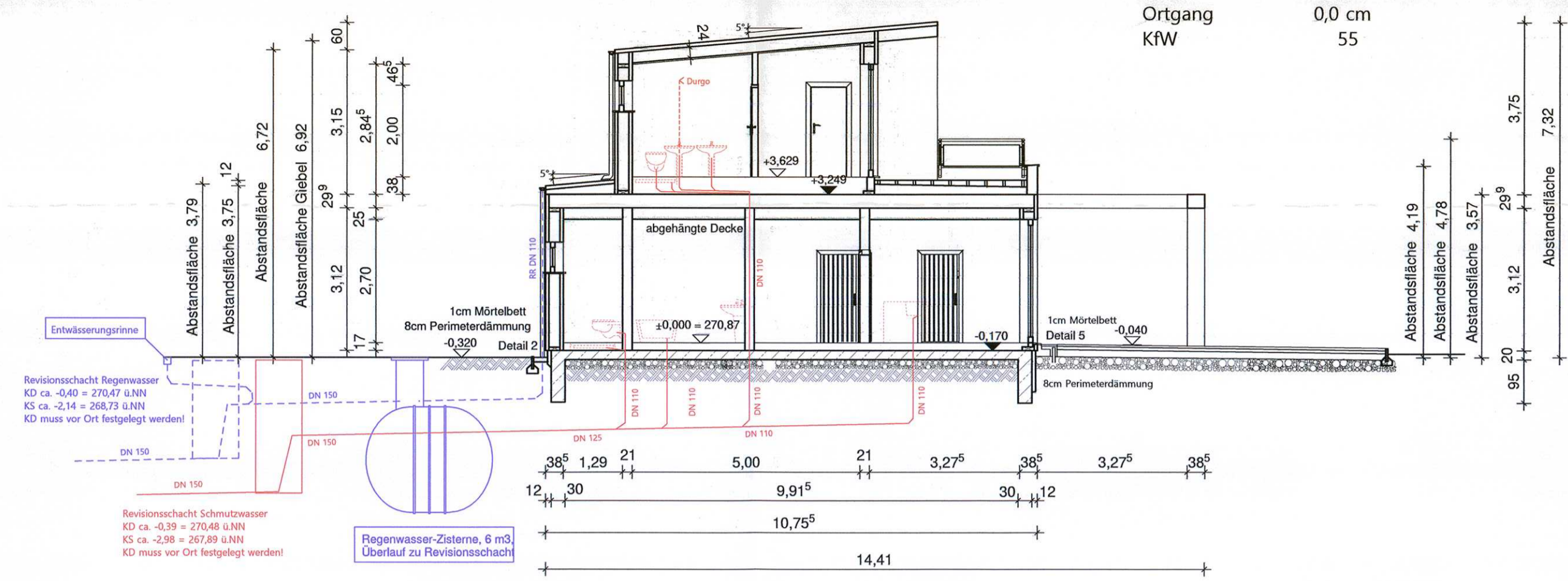


Erdgeschoß

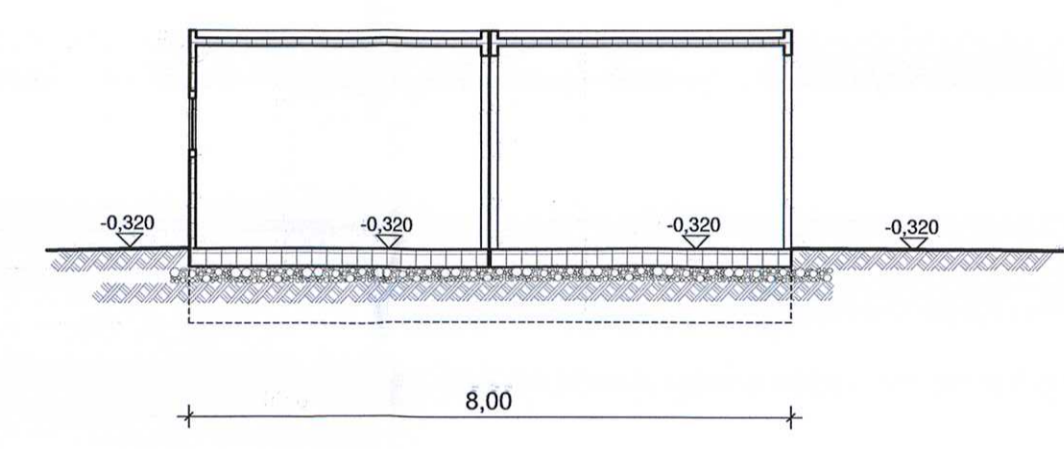


Schnitt A - A

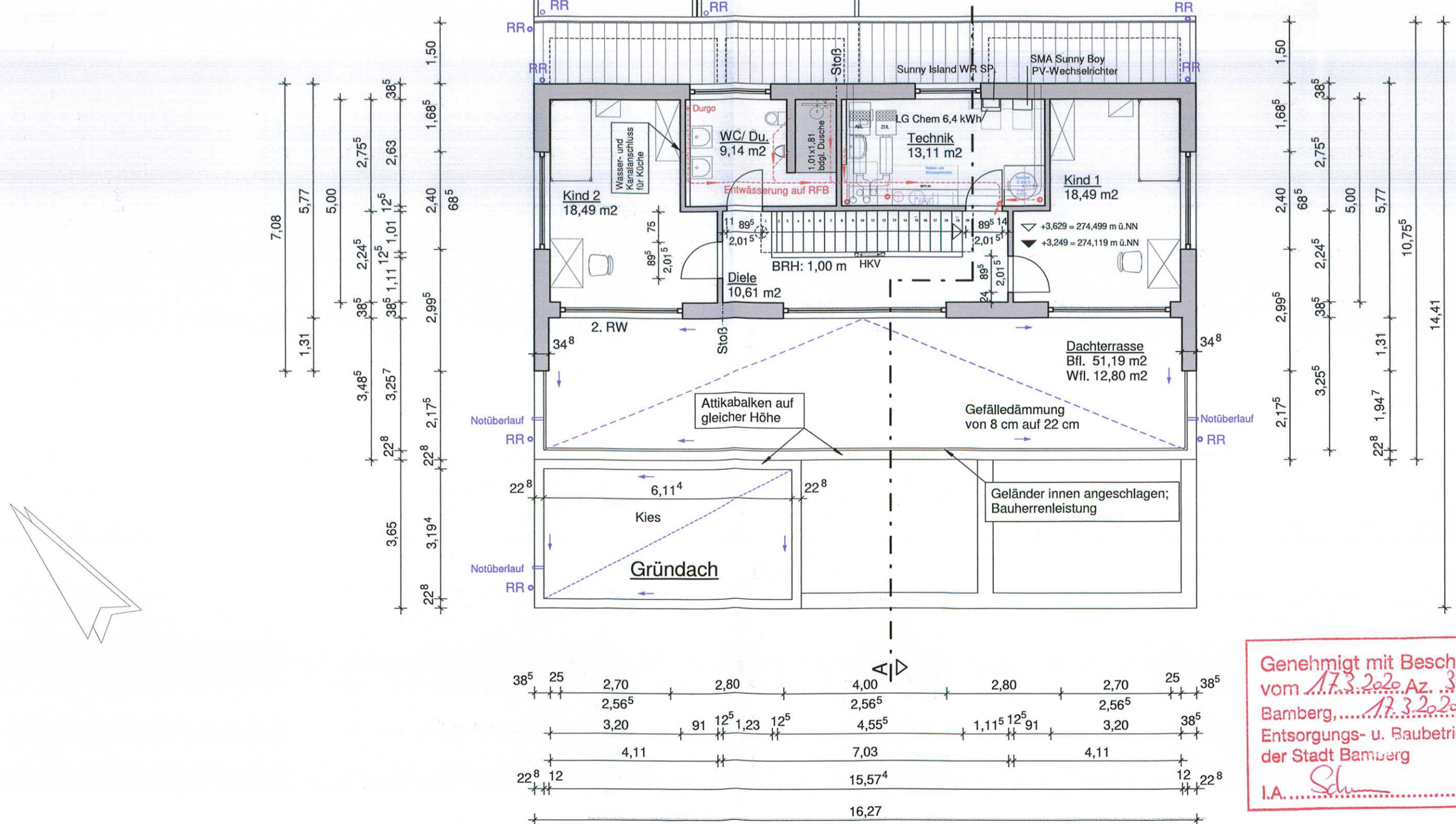
Pultdach 5°
 Kniestock 2,845 m
 Traufe 0,0 cm
 Ortsgang 0,0 cm
 KfW 55



Schnitt B - B



Obergeschoß



Genehmigt mit Bescheid vom 17.3.2020, Az. 34 Bamberg, 17.3.2020 Entsorgungs- u. Baubetrieb der Stadt Bamberg I.A. Sch...