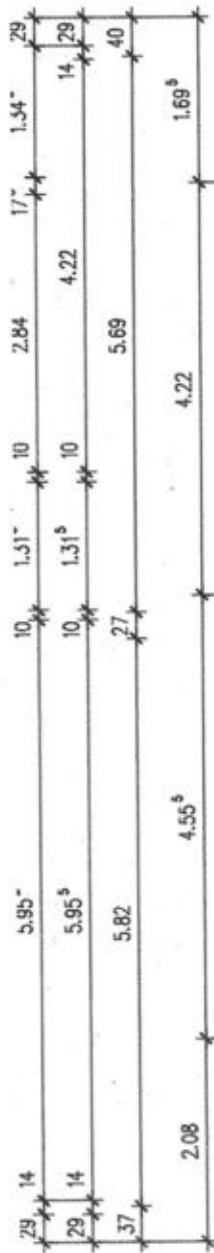
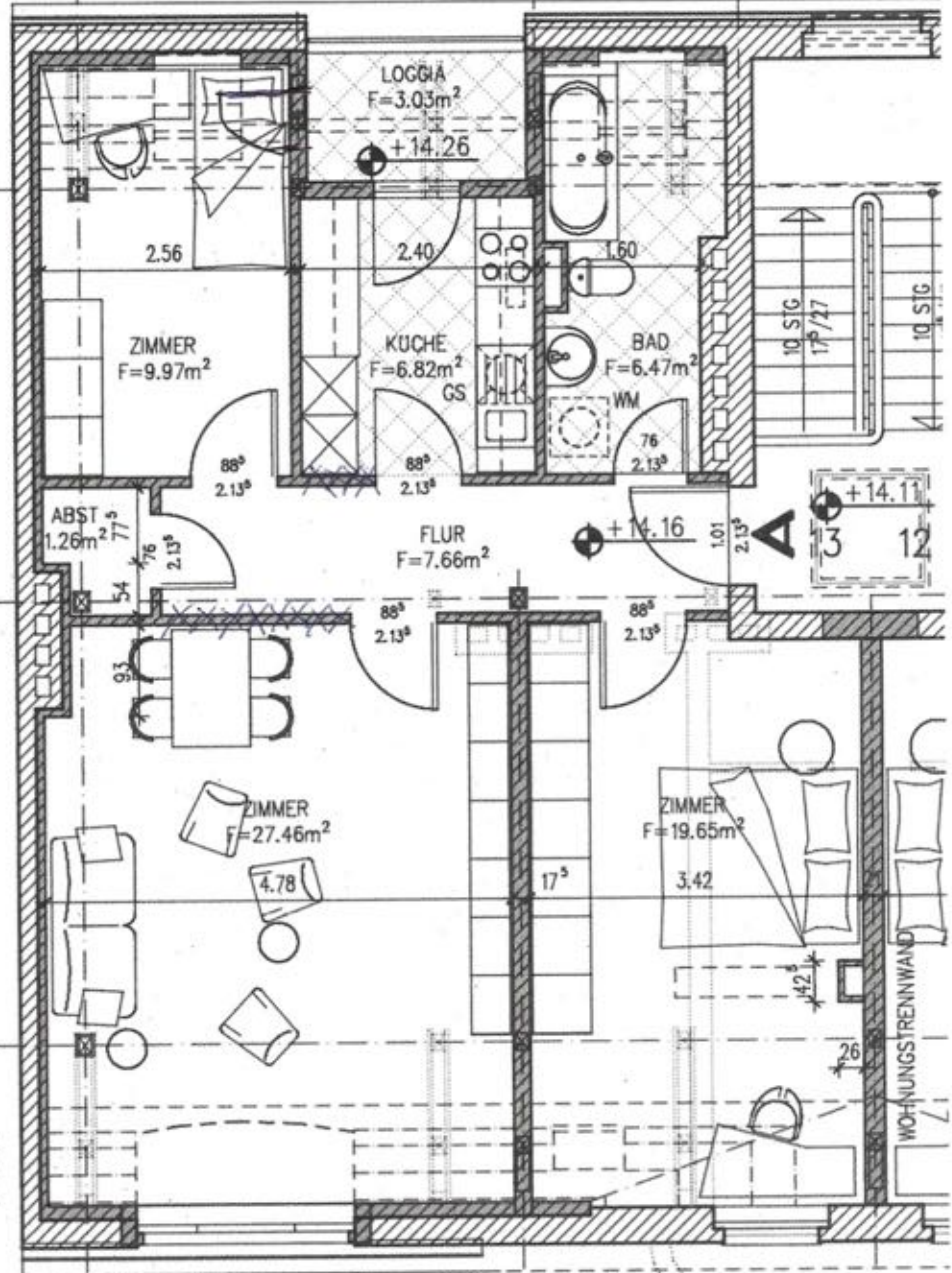


DFL 94 1.18+57 88^s 2.13+50 DFL 94 1.18+57



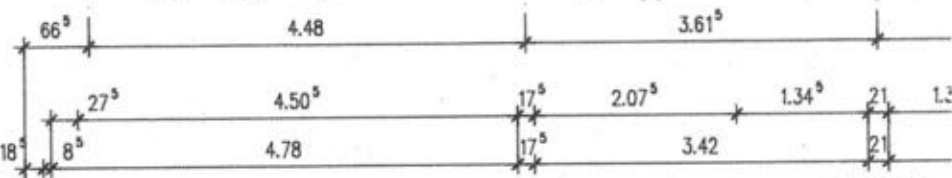
DREMPPEL
H=0.94^s
1.00
1.50
2.00
2.30
L. HOHE

L. HOHE
2.30
2.00
1.50
1.00
DREMPPEL
H=0.95^s



2. RETTUNGSWEG
61 1.00 61
1.35 1.40 1.35

DFL 78
98



17.51