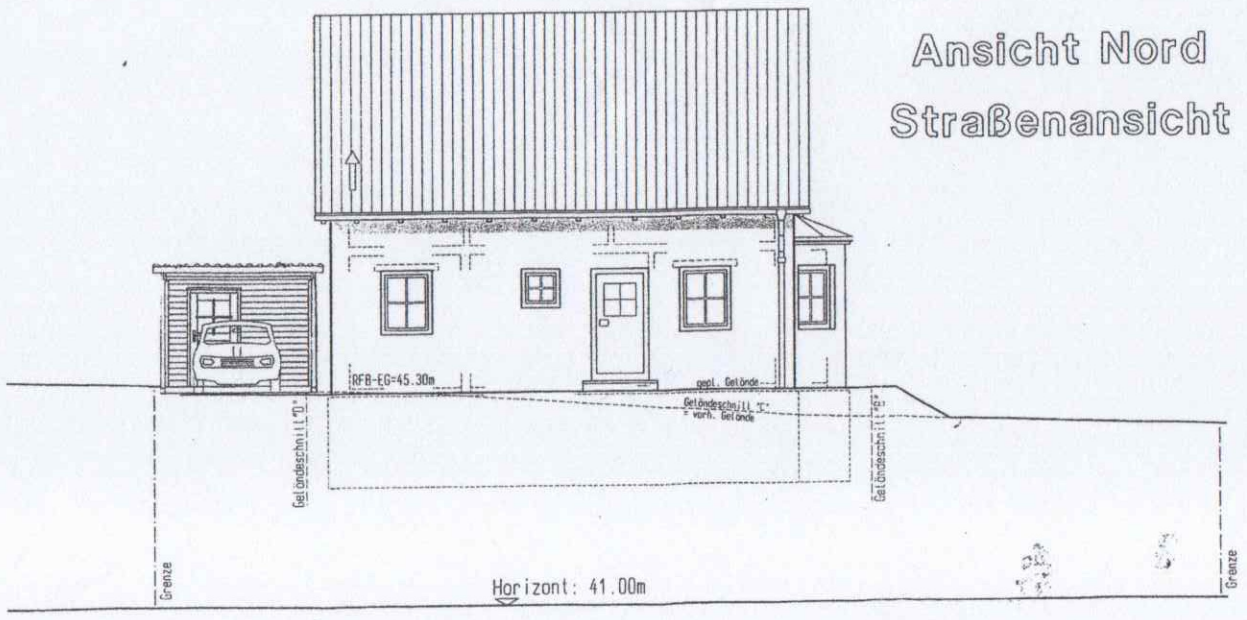
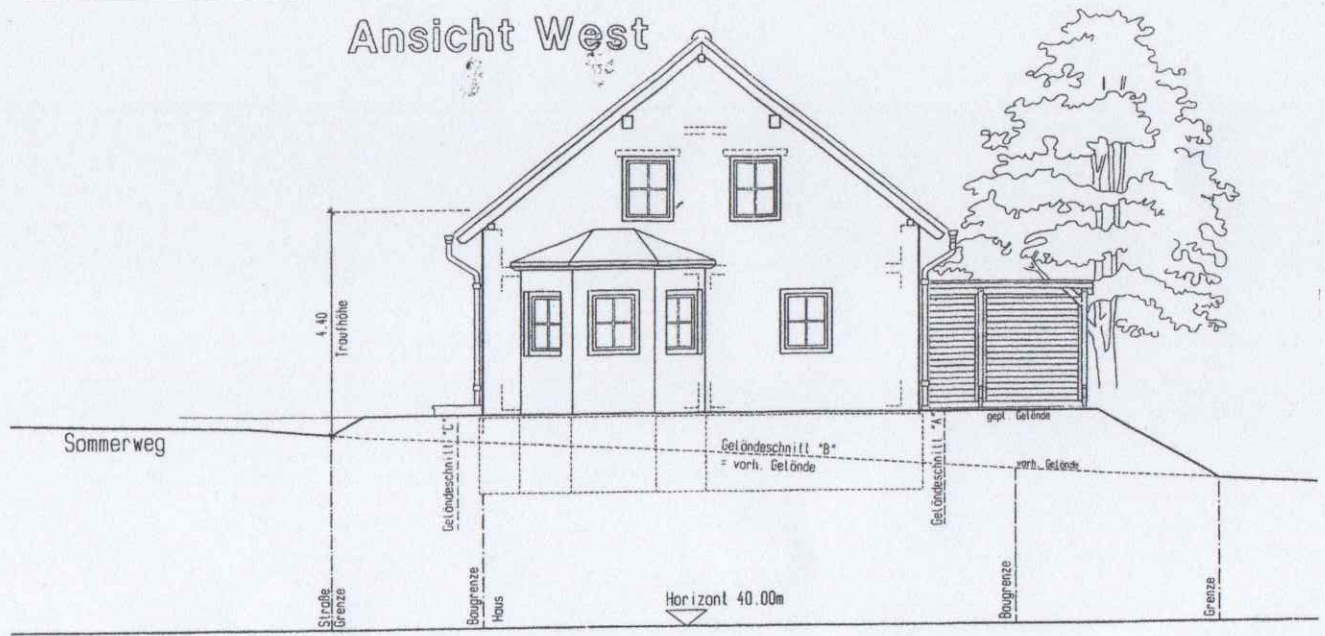


Ansicht Ost

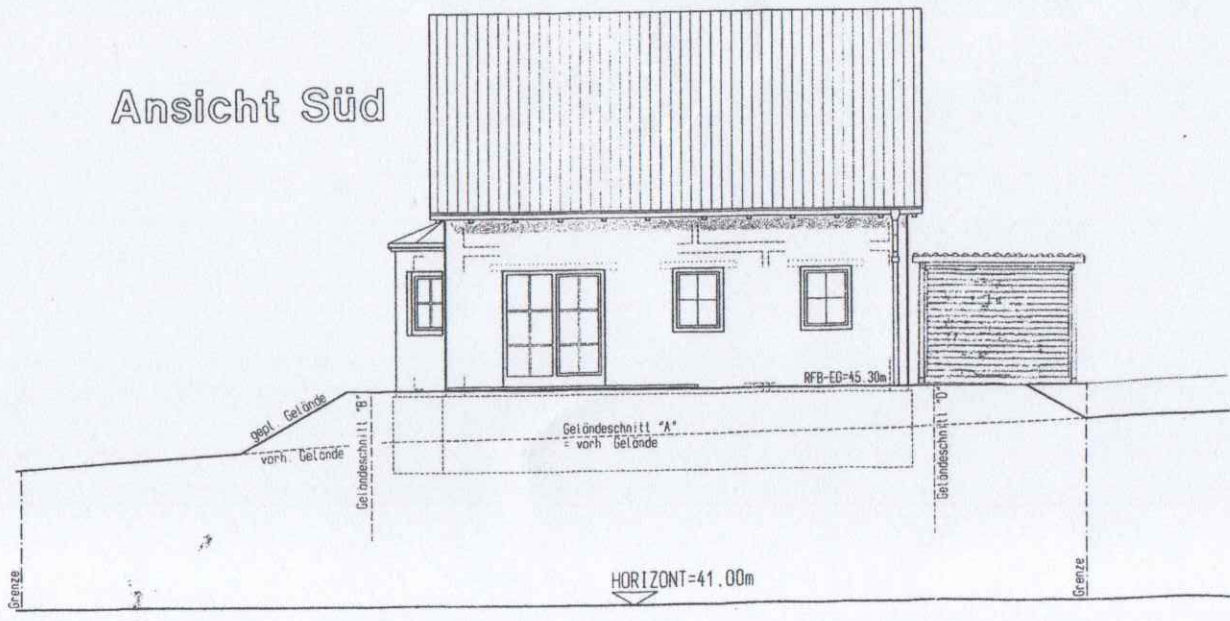


Ansicht Nord
Straßenansicht

Ansicht West



Ansicht Süd

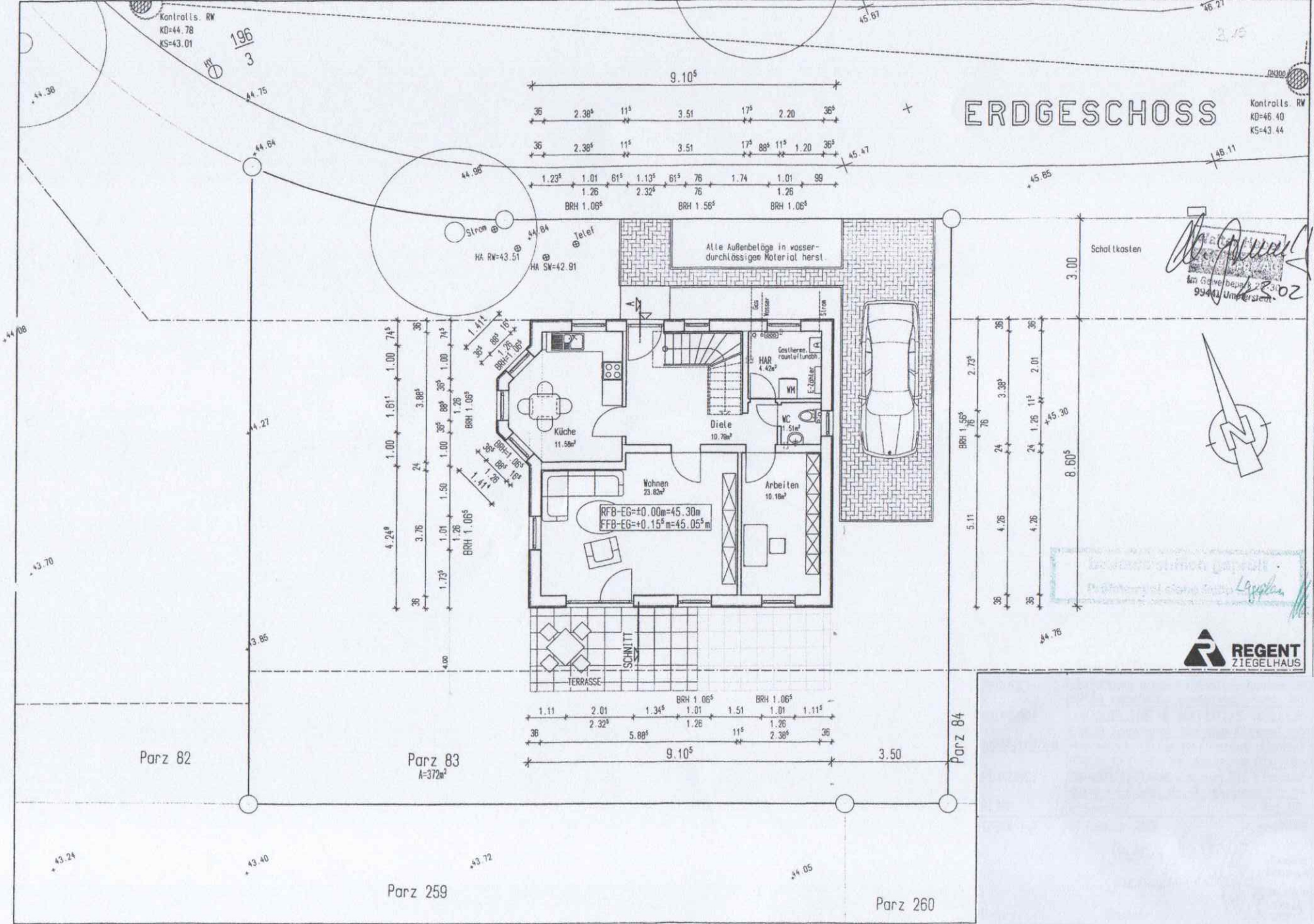
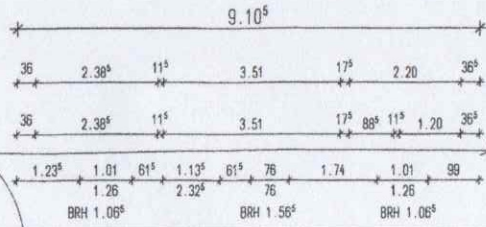


196
3

Kontrolis. RW
KD=44.78
KS=43.01

ERDGESCHOSS

Kontrolis. RW
KD=46.40
KS=43.44



Alle Außenbeläge in wasser-durchlässigen Material herst.

Schal tkosten

Handwritten signature
 im Gebäudefuß
 99444 Umpferden



Handwritten notes:
 ...
 ...
 ...



Parz 82

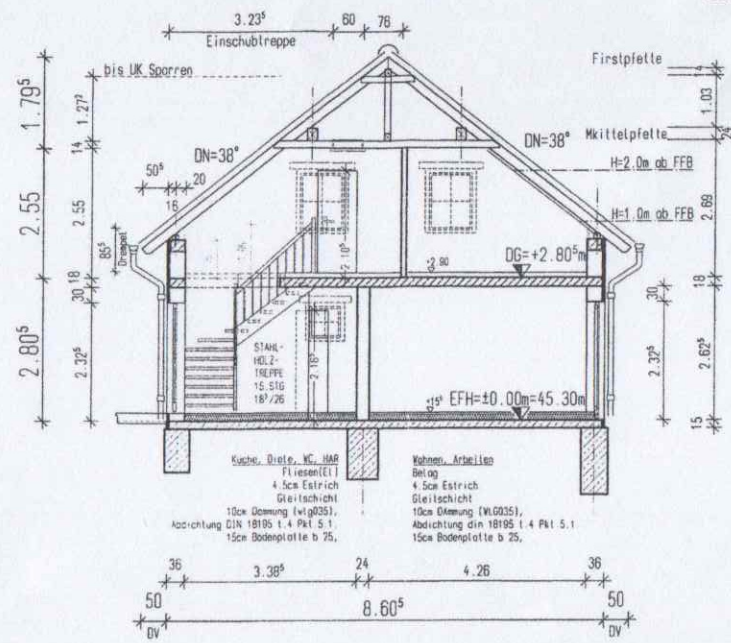
Parz 83
A=372m²

Parz 259

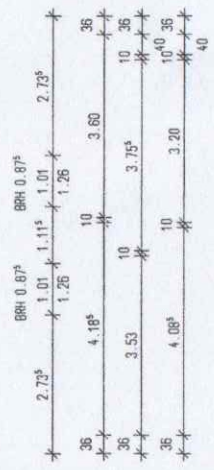
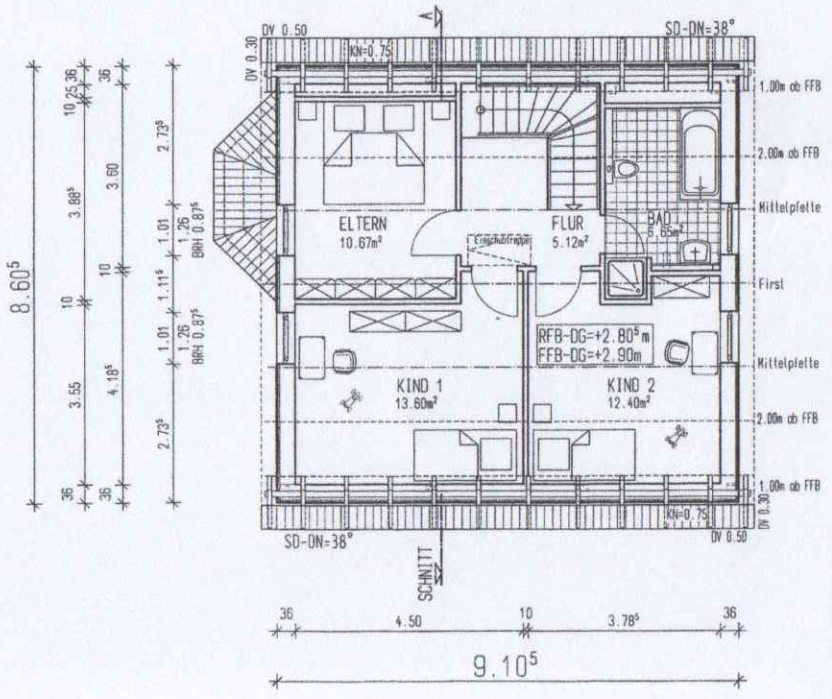
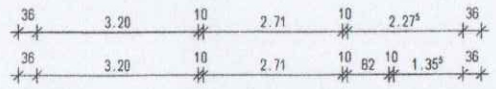
Parz 260

Walter Hebej
 Im Genterbepark 23-30
 99441 Ummerstedt
 1.3.2021

Schnitt A-A



Dachgeschoß



baufaufsichtlich geprüft.
 Prüfstempel siehe Seite 10



