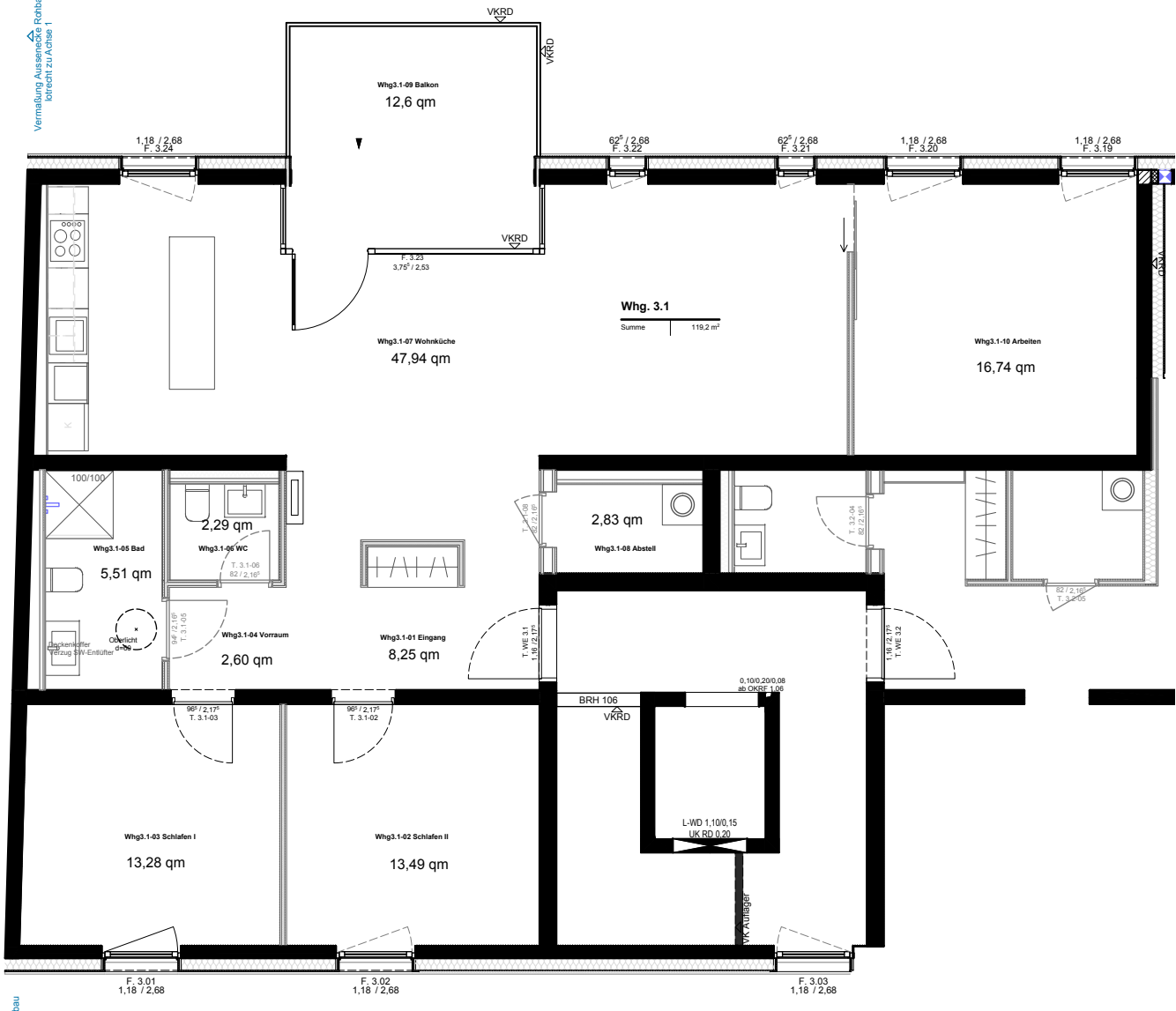


Vermessung Aussenmaße Rohbau  
lotrecht zu Achse 1



Vermessung Aussenmaße Rohbau  
lotrecht zu Achse 1

Whg3.1-01 Eingang	Whg3.1-02 Schlafen II	Whg3.1-03 Schlafen I	Whg3.1-04 Vorraum	Whg3.1-05 Bad	Whg3.1-06 WC	Whg3.1-07 Wohnküche	Whg3.1-08 Abstell	Whg3.1-09 Balkon	Whg3.1-10 Arbeiten
NF: 8,25 m² UF: 11,69 m H: 2,53 m IB: Fliesen I VB: Putz DB: Putz OKFB V9,28 OKRB V9,12 JKRB V9,12 JKRD ▲+11,83	NF: 13,28 m² UF: 14,58 m LH: 2,53 m BB: Fliesen I WB: Putz DB: Putz OKFB V9,28 OKRB V9,12 JKRB V9,12 JKRD ▲+11,83	NF: 13,49 m² UF: 14,70 m LH: 2,53 m BB: Fliesen I WB: Putz DB: Putz OKFB V9,28 OKRB V9,12 JKRB V9,12 JKRD ▲+11,83	NF: 2,60 m² UF: 6,47 m LH: 2,53 m BB: Fliesen I WB: Putz DB: Putz OKFB V9,28 OKRB V9,12 JKRB V9,12 JKRD ▲+11,83	NF: 5,51 m² UF: 9,88 m LH: 2,53 m BB: Fliesen I WB: Fliesen DB: Putz OKFB V9,28 OKRB V9,12 JKRB V9,12 JKRD ▲+11,83	NF: 2,29 m² UF: 6,06 m LH: 2,53 m BB: Fliesen I WB: Fliesen DB: Putz OKFB V9,28 OKRB V9,12 JKRB V9,12 JKRD ▲+11,83	NF: 47,94 m² UF: 36,20 m LH: 2,53 m BB: Fliesen I WB: Putz DB: Putz OKFB V9,28 OKRB V9,12 JKRB V9,12 JKRD ▲+11,83	NF: 2,83 m² UF: 8,94 m LH: 2,52 m BB: Fliesen I WB: Putz DB: Putz OKFB V9,28 OKRB V9,12 JKRB V9,12 JKRD ▲+11,83	NF: 12,49 m² UF: 14,52 m LH: 2,52 m BB: Fliesen I WB: Putz DB: Putz OKFB V9,28 OKRB V9,12 JKRB V9,12 JKRD ▲+11,83	NF: 16,74 m² UF: 16,37 m LH: 2,52 m BB: Fliesen I WB: Putz DB: Putz OKFB V9,28 OKRB V9,12 JKRB V9,12 JKRD ▲+11,83