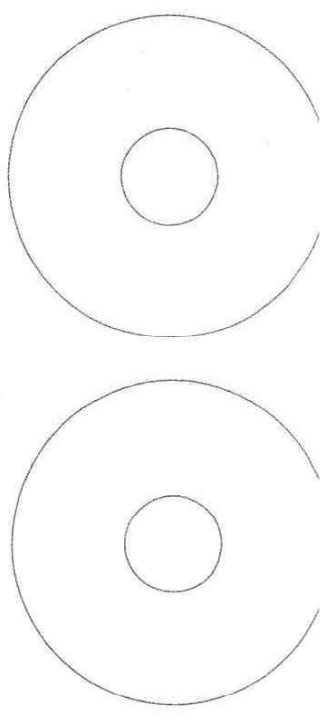


Anlage 1 - Erdgeschoss

WC 021	Fliesen
UV 305	FB
	GF: 5,32 m ²
	NF: 6,22 m ²
	RU: 10,410 m





Anlage 1 - Obergeschoss

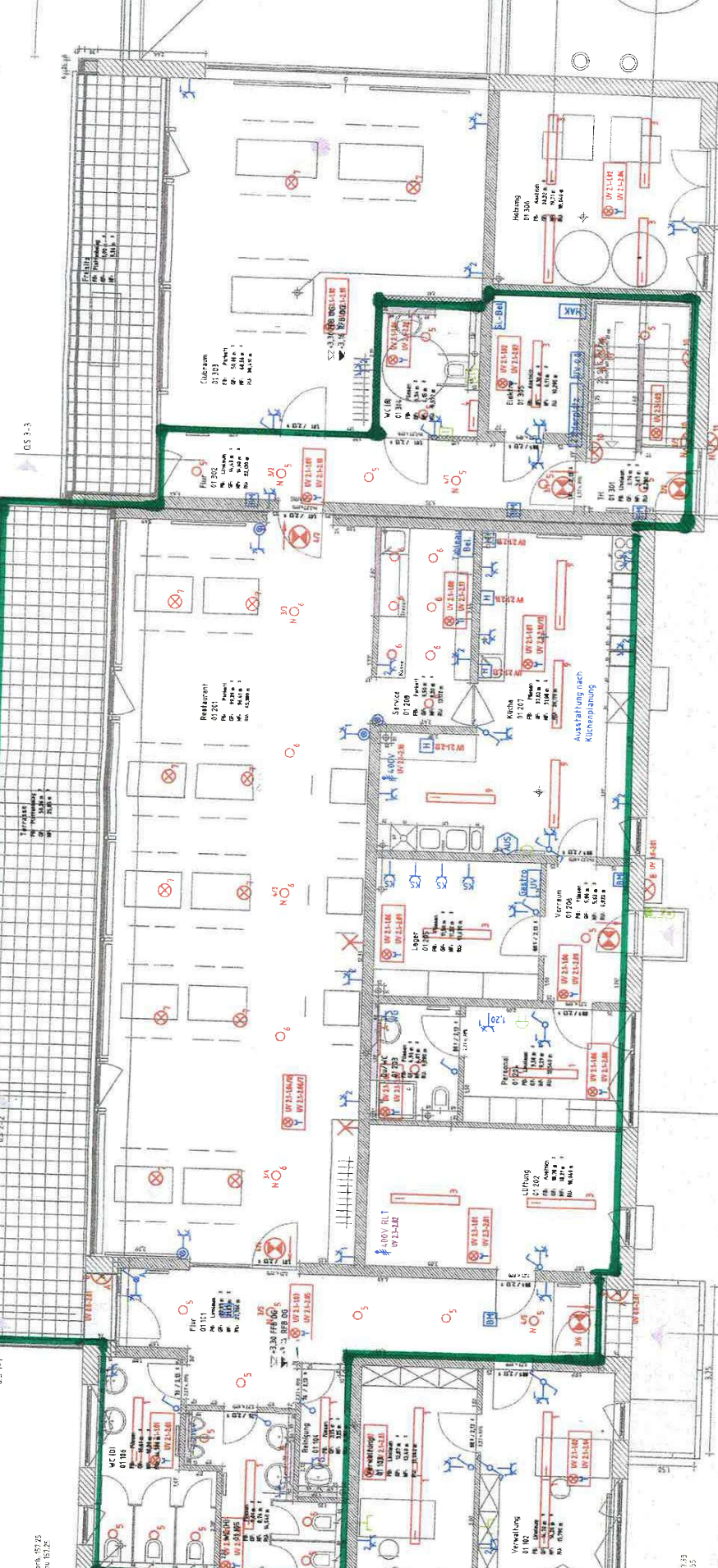
05 1-1
 05 1-2
 05 1-3
 05 2-1
 05 2-2
 05 2-3
 05 3-1
 05 3-2
 05 3-3

OFB verh. 1/27.25
 OFB neu. 1/27.25

OFB verh. 1/27.25
 OFB neu. 1/27.25

OFB verh. 1/27.25
 OFB neu. 1/27.25

Einbauelemente
 Aufputz 20
 Putz
 Mauerwerk
 Stahlbeton



OFB verh. 1/27.25
 OFB neu. 1/27.25

OFB verh. 1/27.25
 OFB neu. 1/27.25

OFB verh. 1/27.25
 OFB neu. 1/27.25

OFB verh. 1/27.25
 OFB neu. 1/27.25

OFB verh. 1/27.25
 OFB neu. 1/27.25

OFB verh. 1/27.25
 OFB neu. 1/27.25