

Haustyp B / D

Reihenendhaus D - Doppelhaushälfte B

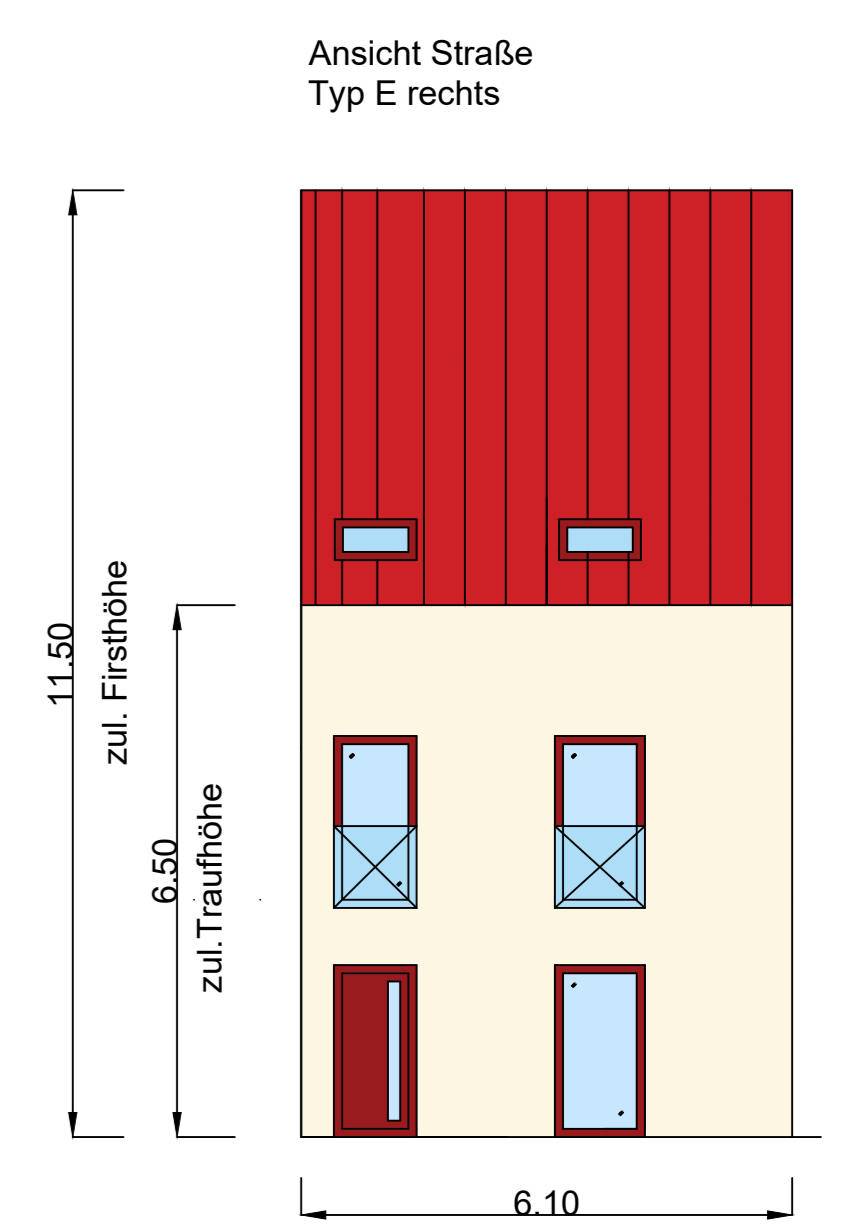
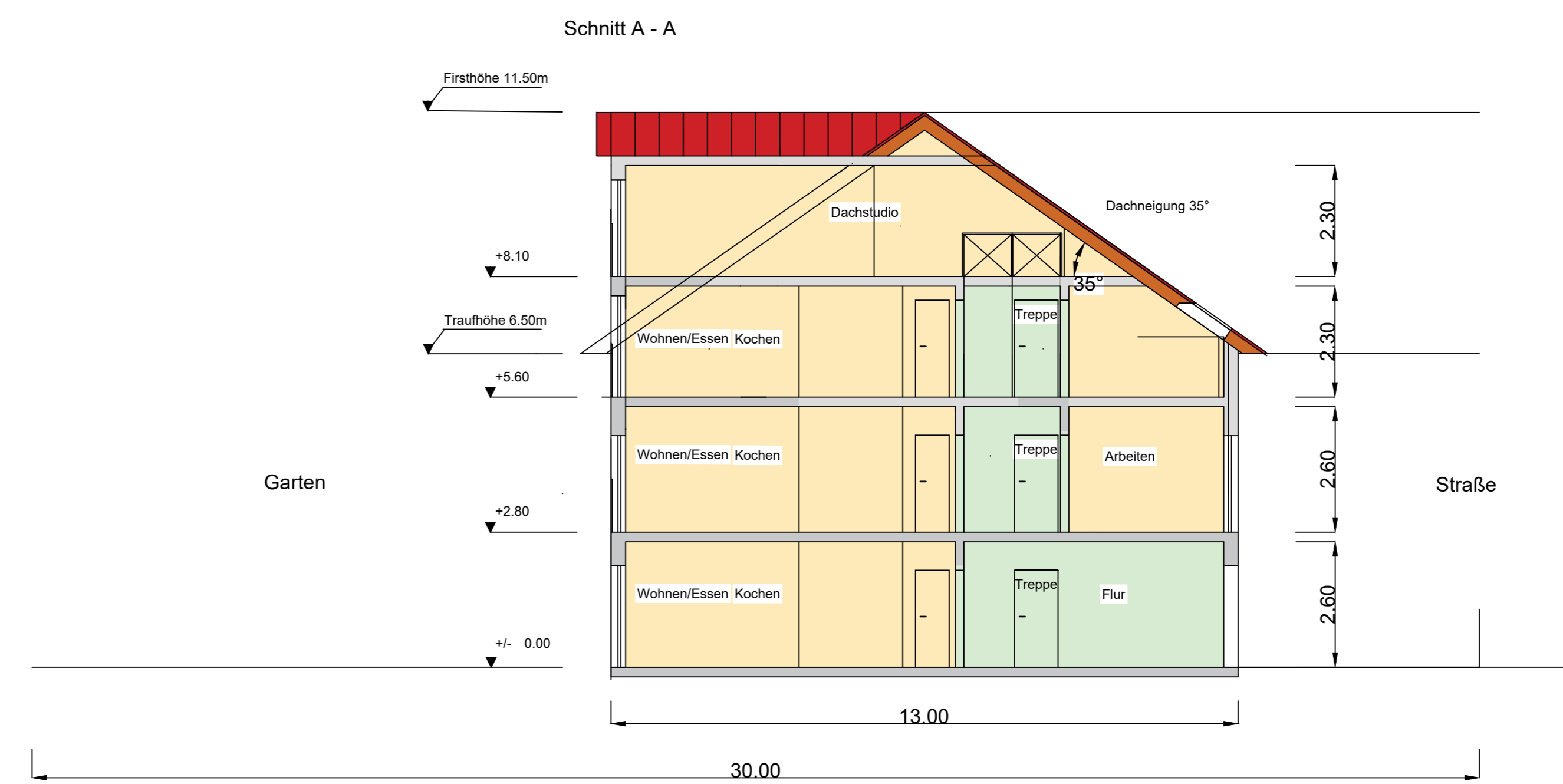
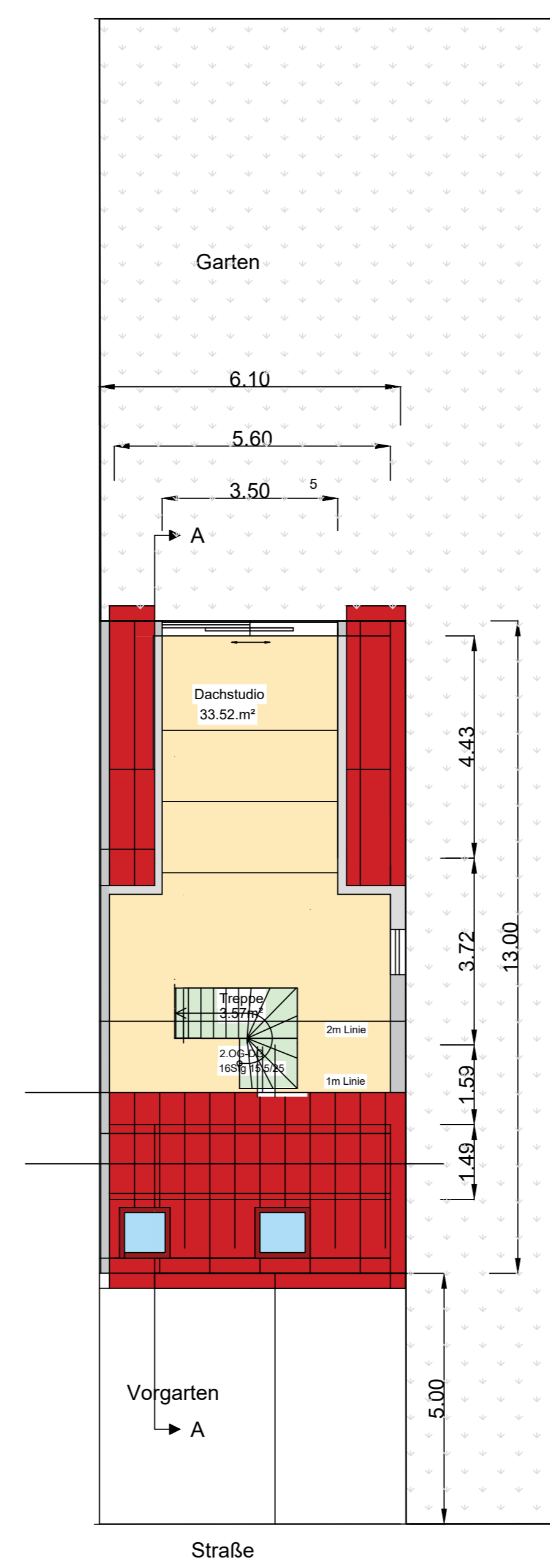
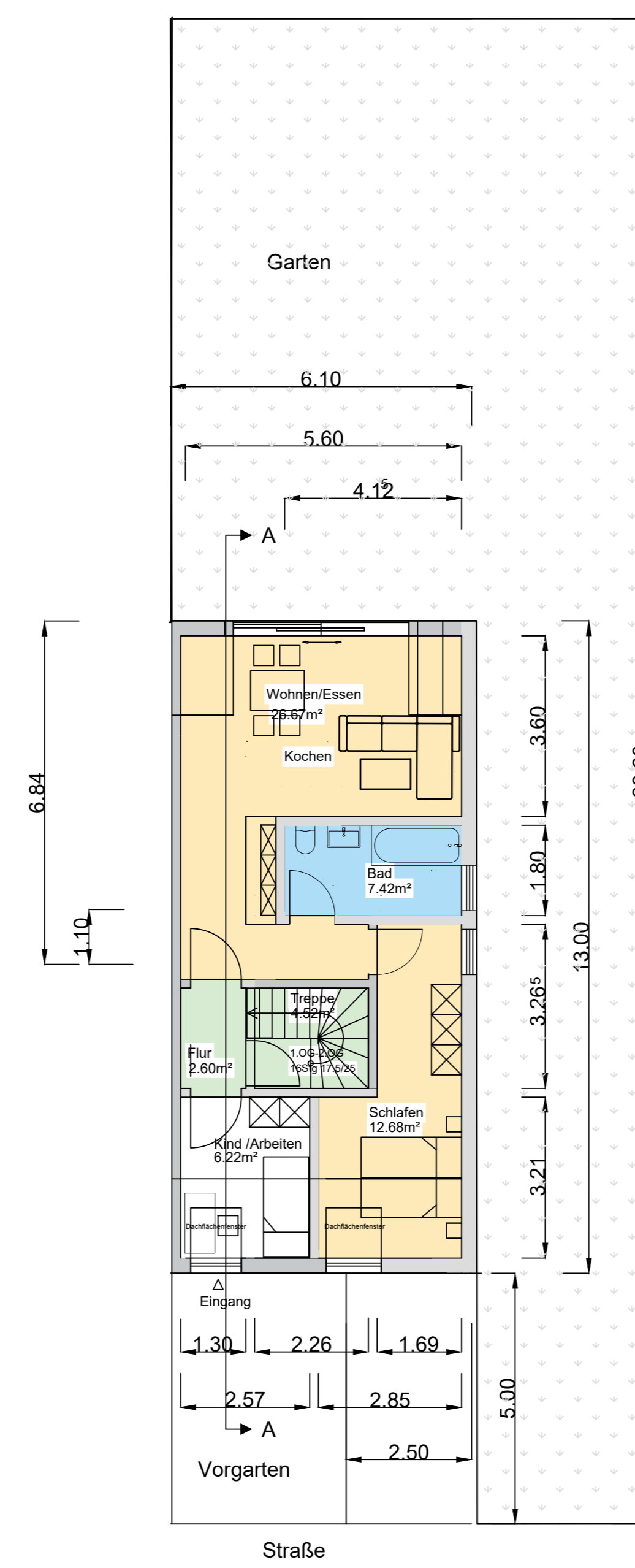
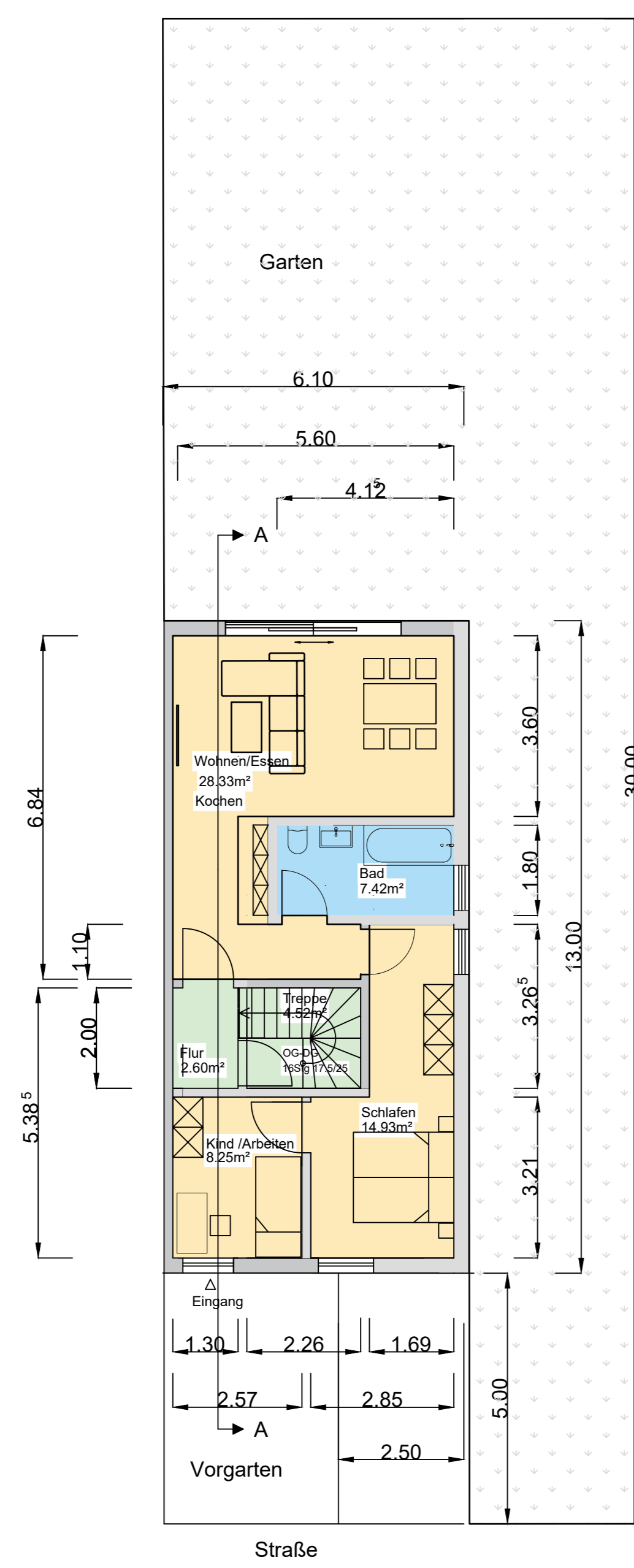
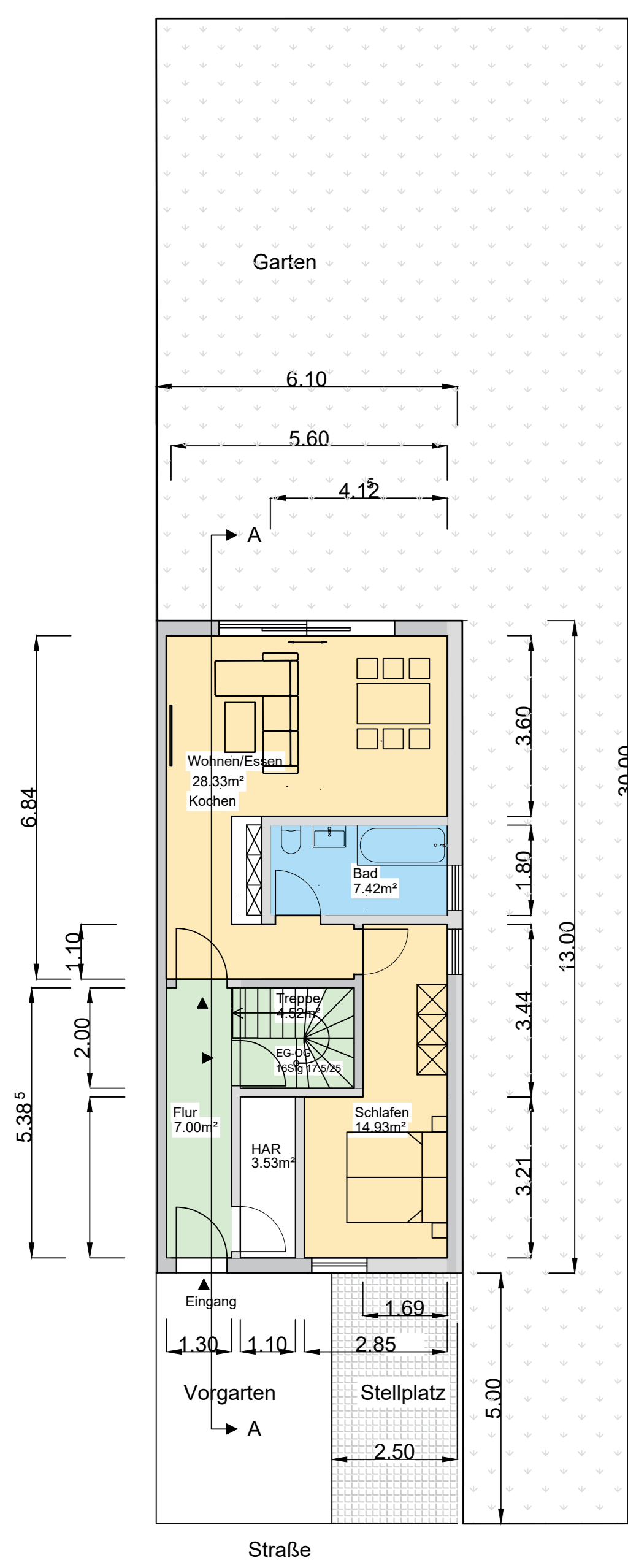
3 geschossig

Erdgeschoss
65.73m²

1.Obergeschoss
66.05m²

2.Obergeschoss
60.11m²

Dachgeschoss
33.52m²



Nettofläche
225.41m²

Halle
KaiserslautererStr/Waldhornweg
Eigentümer: 1.Wörnitzler Immobilien GmbH
Hafenstr. 12
04416 Markkleeberg

