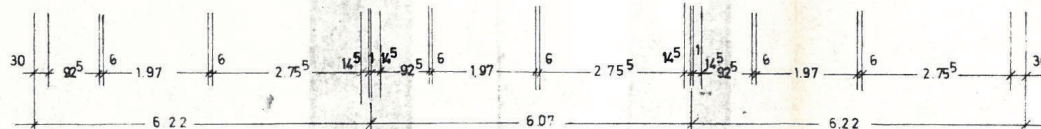
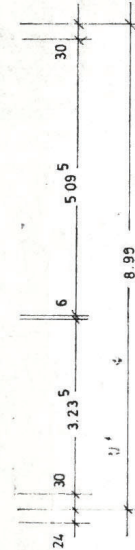
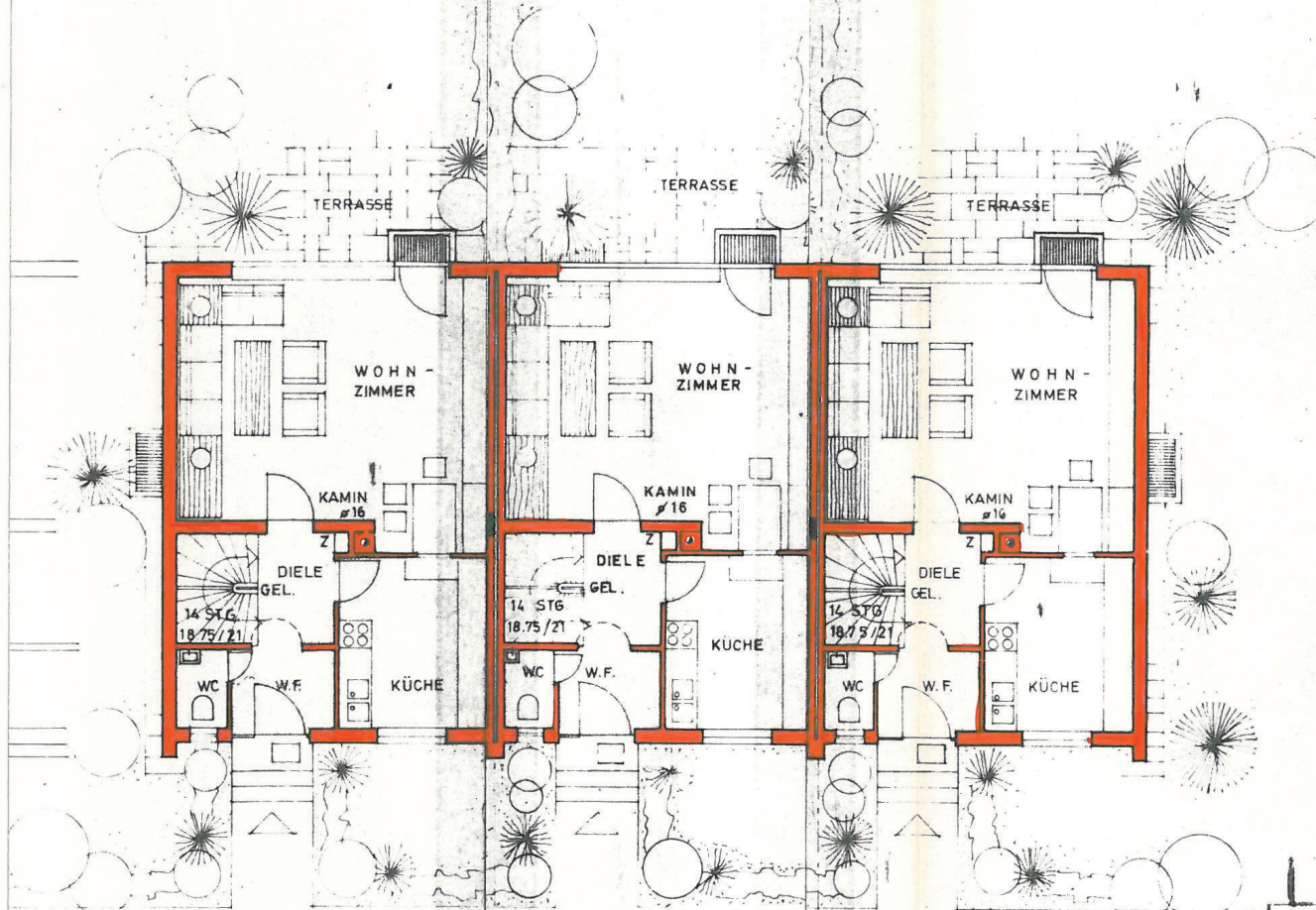
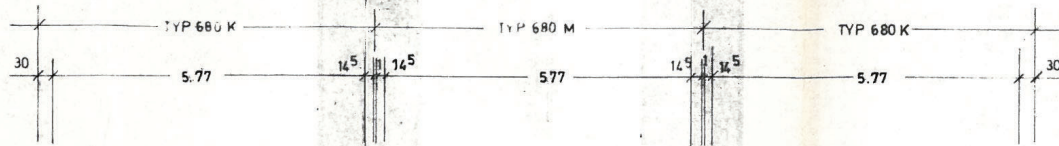


ERDGESCHOSS M. 1:100



BAUVORHABEN: WOHNANLAGE FELDKIRCHEN
 TYP 680 K
 BAHNHOFSTRASSE

P. NR. 282/3
 ERDGESCHOSS
 KELLERGESCHOSS

MASSTAB 1:100

NÜRNBERG, DEN 23-7-69 GEÄNDERT 9.4.68 SCHM.
 27.1.69
 SÄMTLICHE ENTWURFS UND KONSTRUKTIONSRECHTE
 ARCHIT. INGENIEUR DIETRICH P. FERSCH

Fersch

M. 1:100