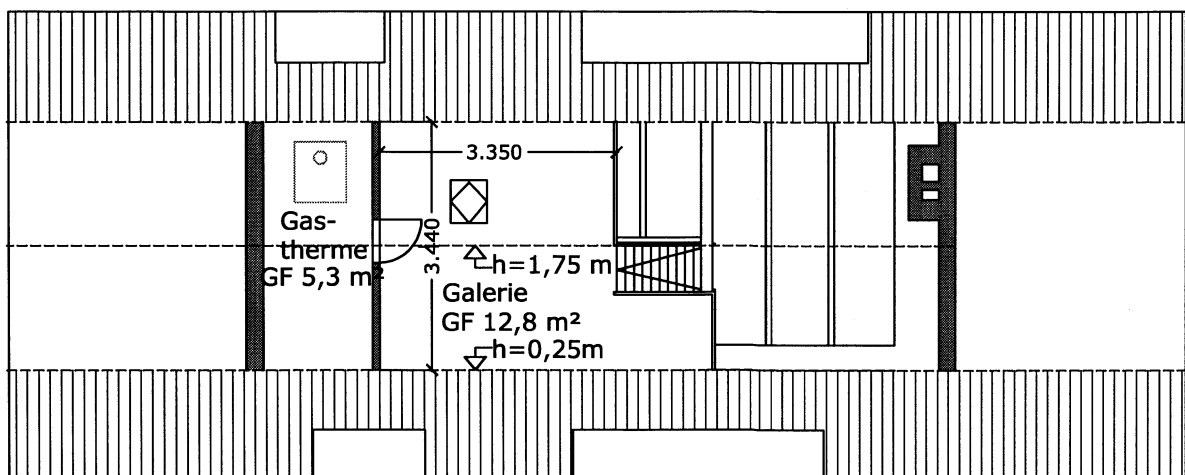
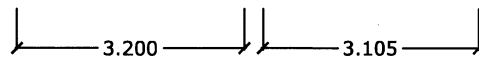


Grundriss 5.OG  
65,64 m<sup>2</sup> NF gem DIN 277



Galerie/Spitzboden

Beltgens Garten 8; 5.OG  
Bestandsplan M 1:100; 12.12.2011

planungsbüro linzmann-stein  
Granitweg 3 22395 HH Tel. 040- 606 82 872