

GAS

WW

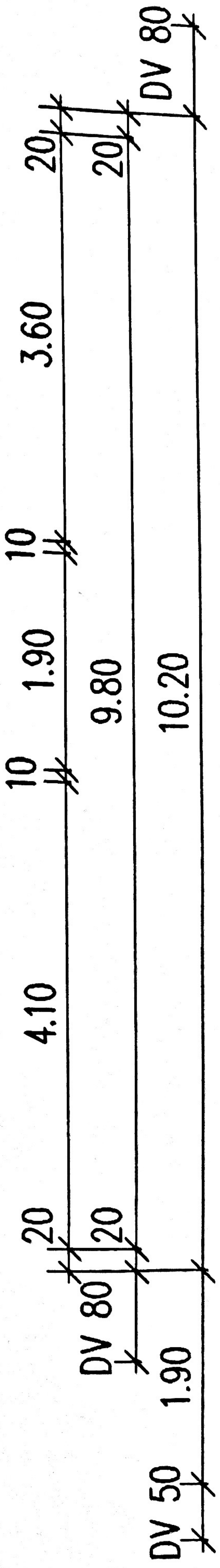
TECHNIK
3.28 m²

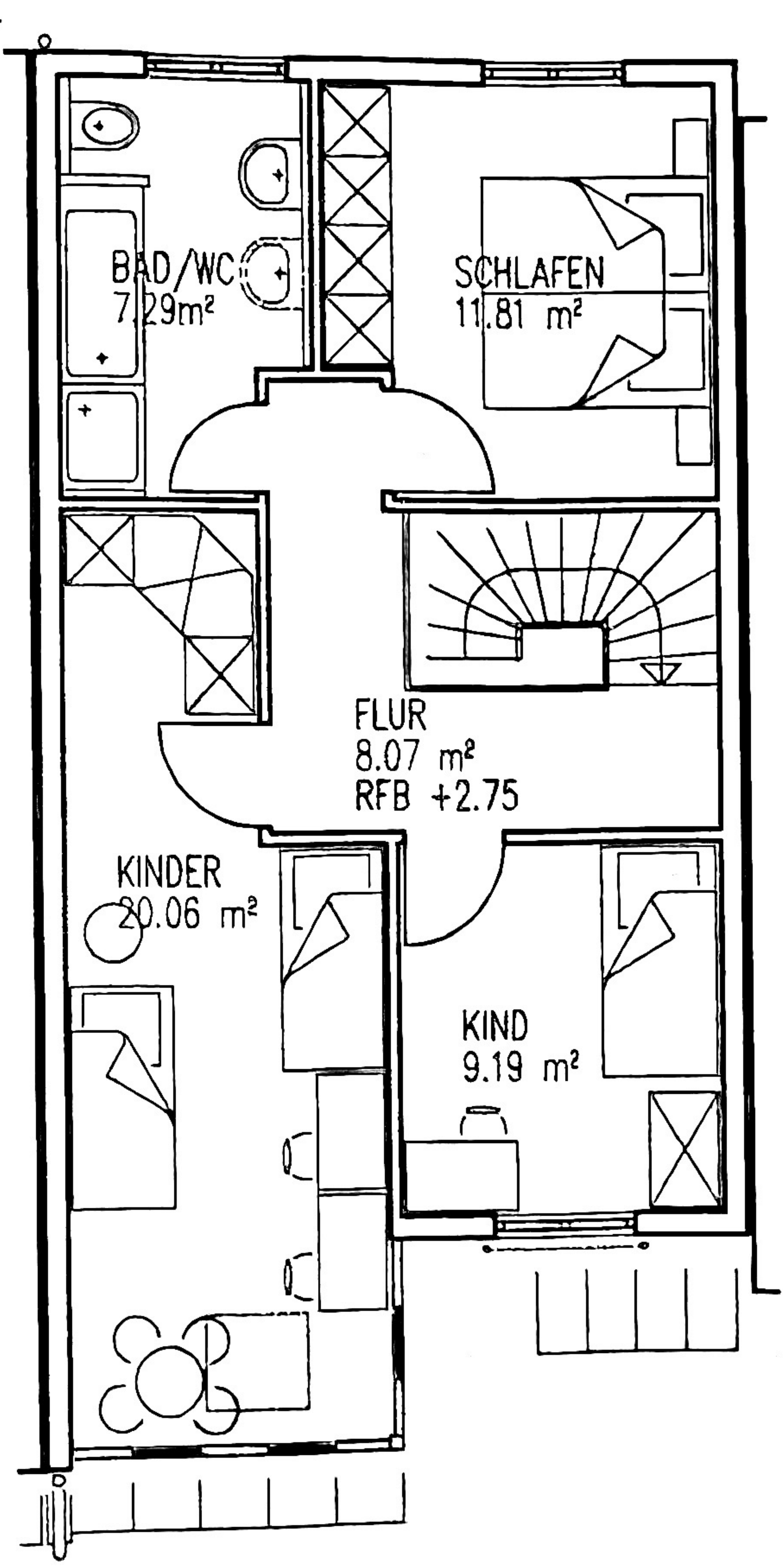
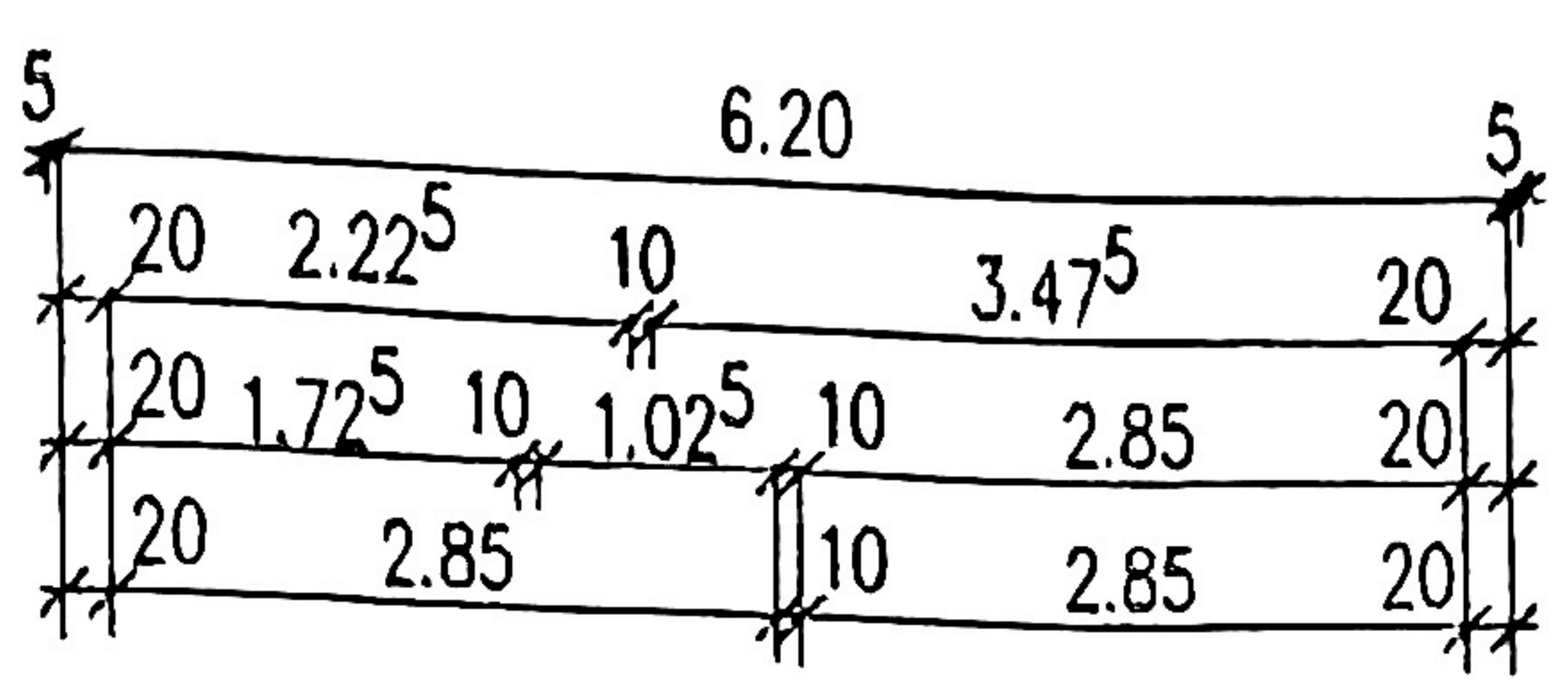
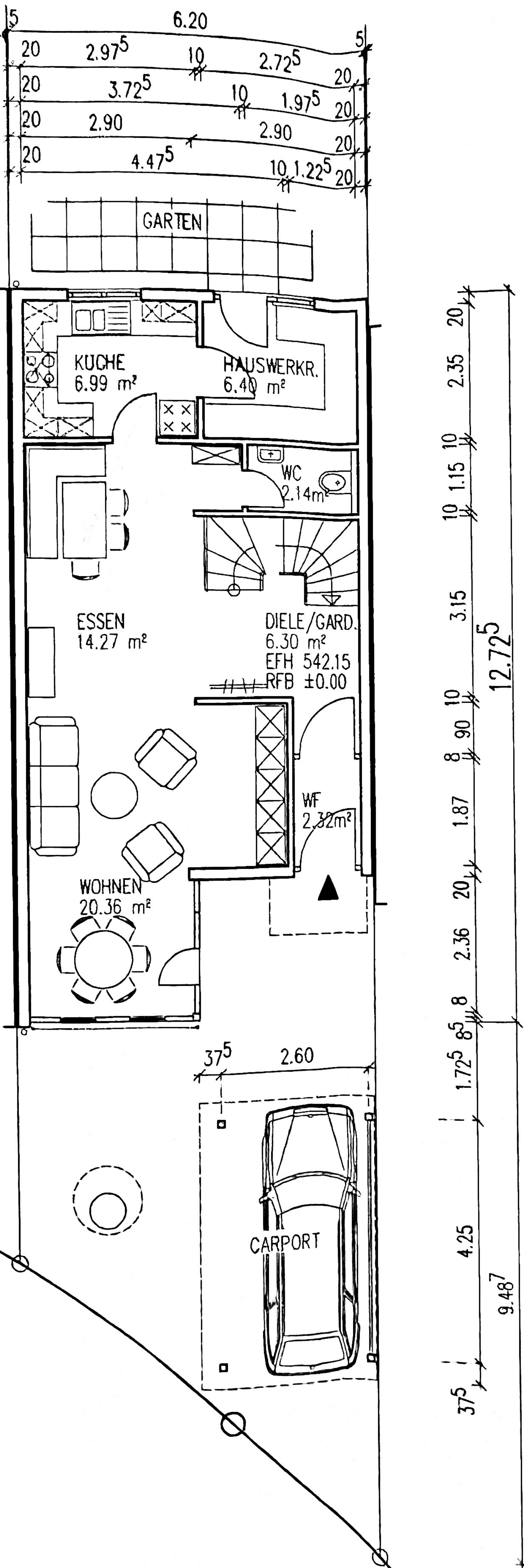
BODENTREPPE

DACHRAUM
41.11 m²
RFB +5.50

2m

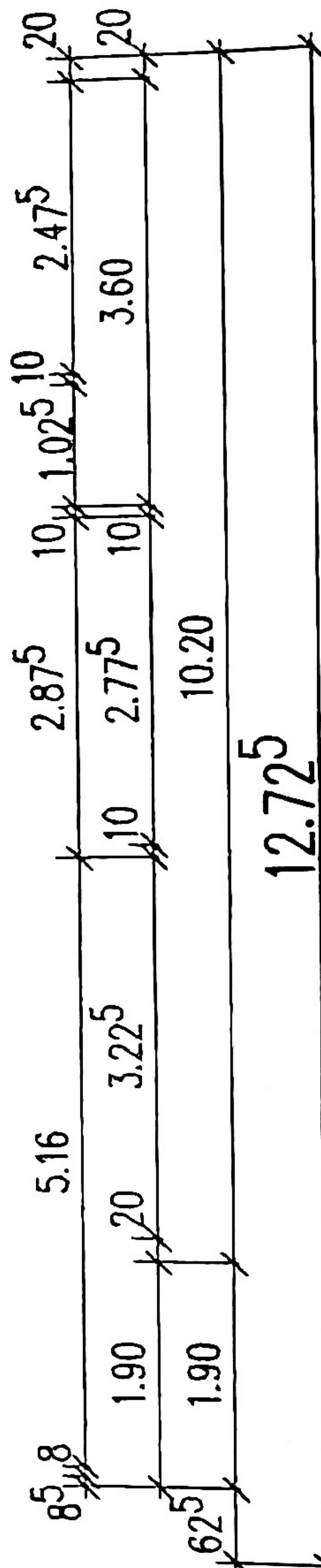
2m

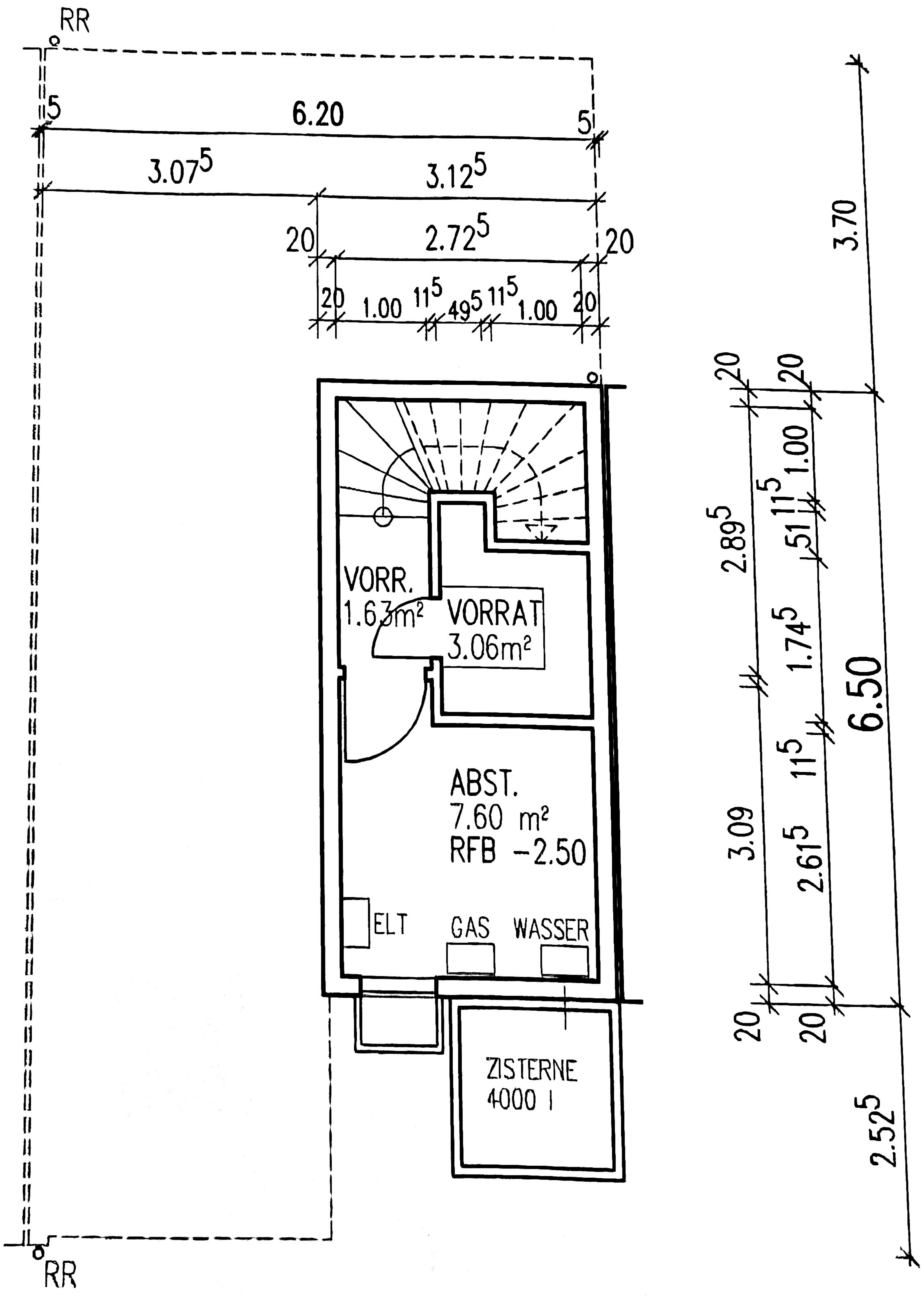




OBERGESCHOSS

ERDGESCHOSS



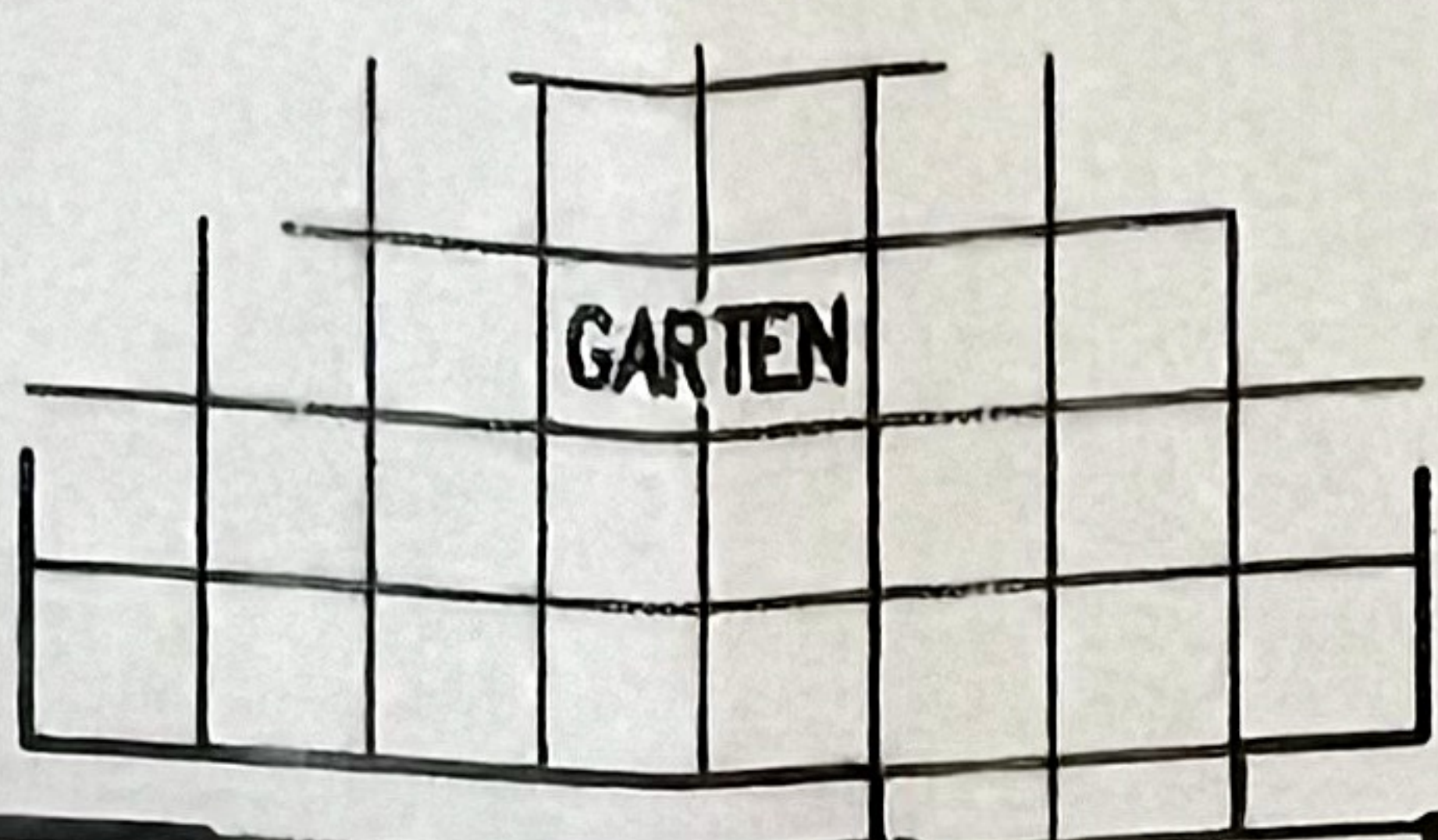


UNTERGESCHOSS

5

8.20

5



GARTEN

KUCHE
6.99 m²

HAUSWERKR.
6.40 m²

WC
2.14 m²

ESSEN
14.27 m²

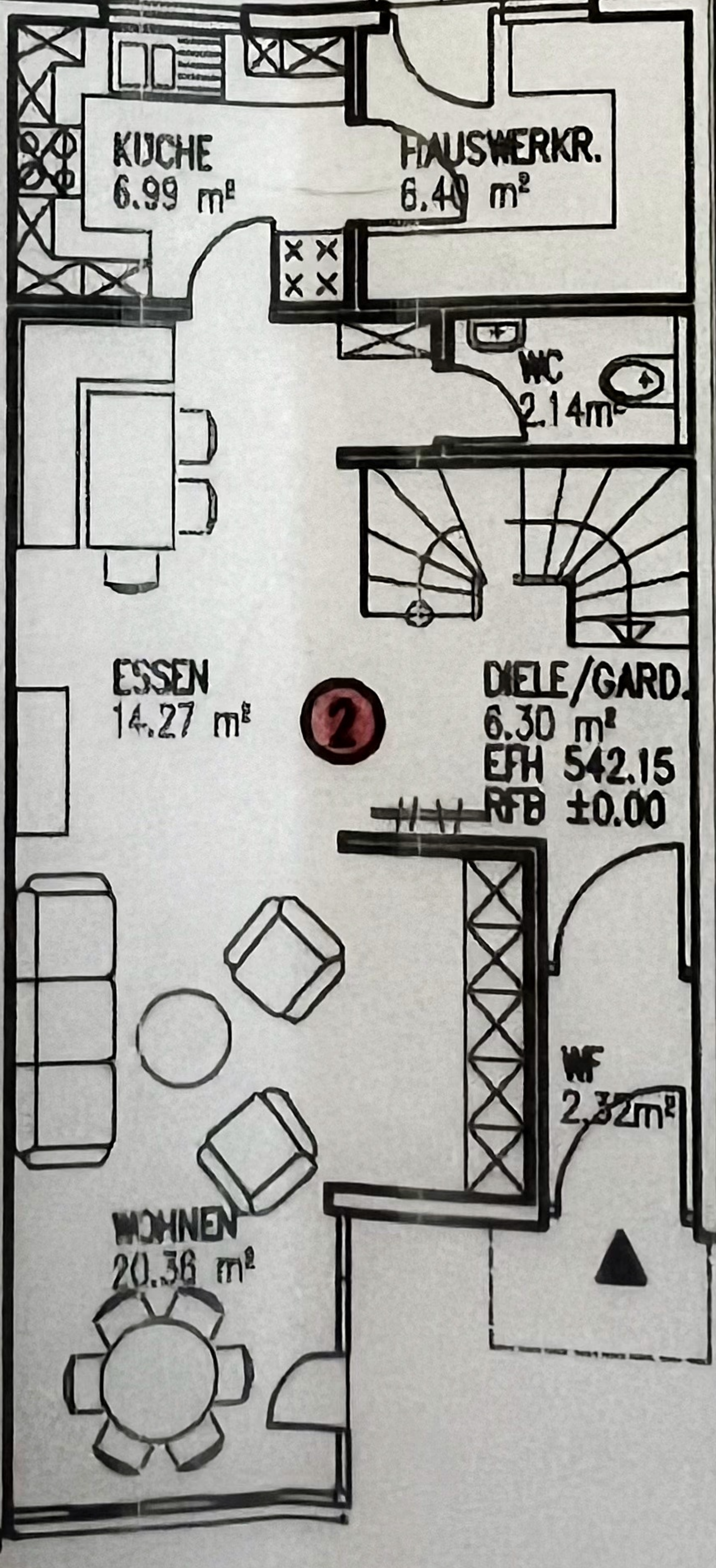
DIELE/GARD.
6.30 m²
EFH 542.15
RFB ±0.00

2

WF
2.32 m²

WOHNEN
20.36 m²

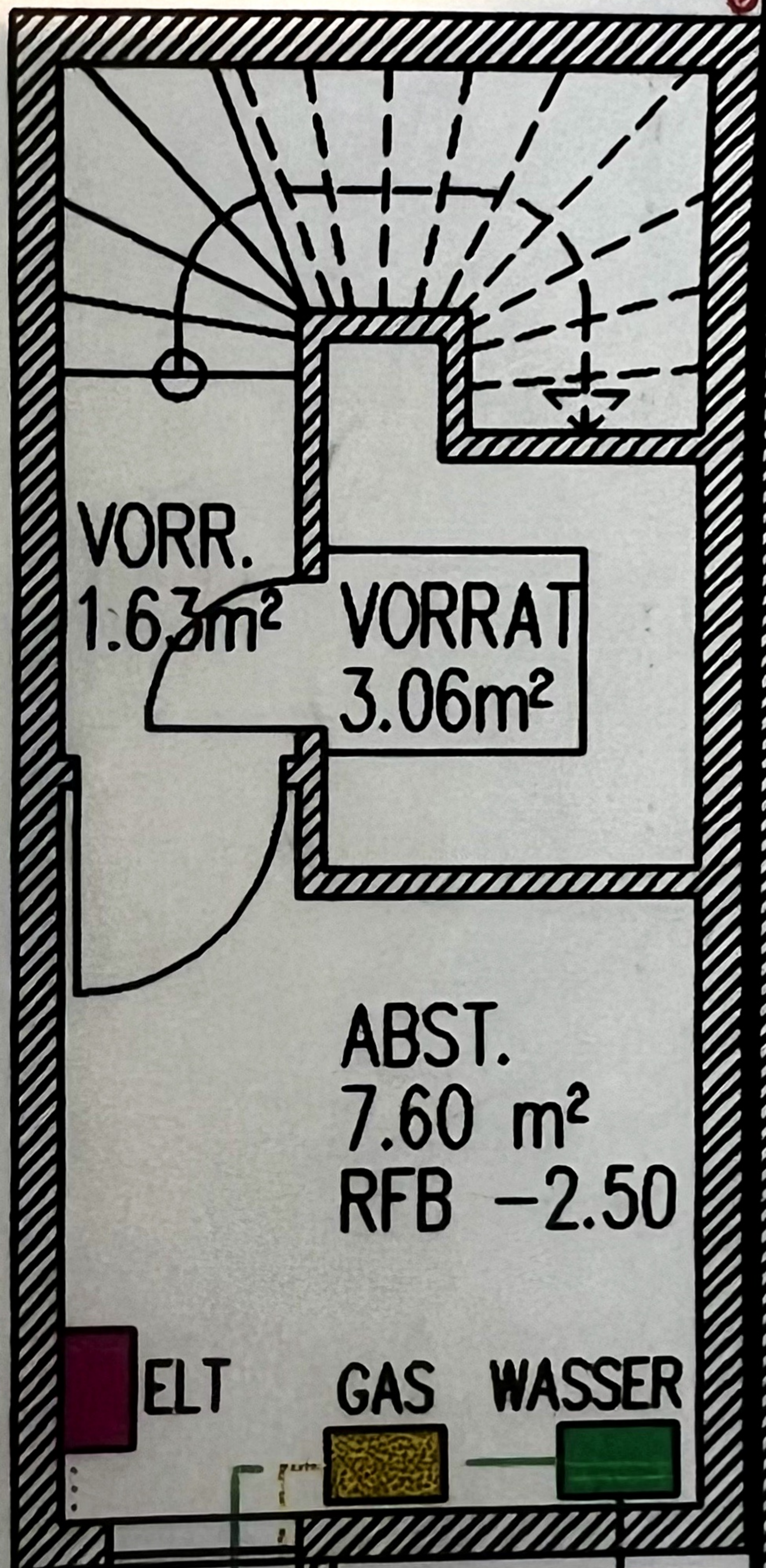
CARPORT



< Ø 100

1 WC

< Ø 125



Ø 100 >

< Ø 100

ZISTERNE
4000 l
UBERLAUF



ca. 219 m²

Geländehöhe :
H bezogen

- 0,60

6,25

WOHNHAUS

$$RFBH = \sqrt{542,95}$$

Zyste
ne

OG
FG

Carport

ungs-
hacht



541,58

541,82

5

1234

öffentli

